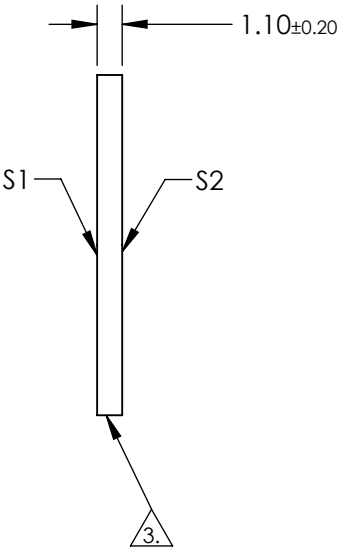
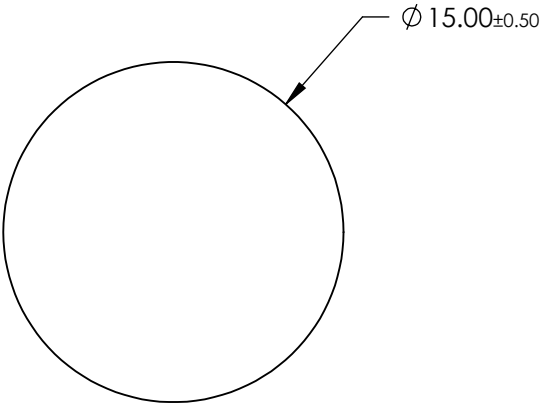
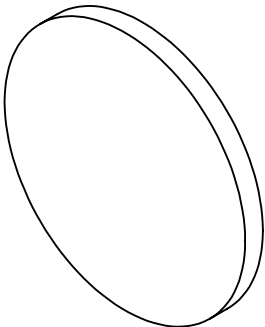


NOTES:

- 1. SUBSTRATE: BOROFLOAT®
- 2. COATING (APPLY ACROSS CLEAR APERTURE):
S1 & S2: R(ABS) ≤2.5% @ 550nm
- 3. FINE GRIND SURFACE
- 4. ROHS COMPLIANT



FOR INFORMATION ONLY:
DO NOT MANUFACTURE
PARTS TO THIS DRAWING

SPECIFICATIONS SUBJECT TO CHANGE WITHOUT NOTICE
DIMENSIONS ARE FOR REFERENCE ONLY

| | S1 | S2 |
|------------------|----------------------|----------------------|
| SHAPE | PLANO | PLANO |
| SURFACE FLATNESS | 4 - 6λ | 4 - 6λ |
| SURFACE QUALITY | 80 - 50 | 80 - 50 |
| CLEAR APERTURE | Ø 13.50 | Ø 13.50 |
| BEVEL | PROTECTIVE AS NEEDED | PROTECTIVE AS NEEDED |

| | | | |
|------------------------|--|----------------|---|
| THIRD ANGLE PROJECTION | | Edmund Optics® | |
| ALL DIMS IN | | TITLE | 15mm Diameter x 1.1mm Thickness, MgF2 Coated, BOROFLOAT® Window |
| mm | | DWG NO | 29400 |
| | | | SHEET 1 OF 1 |