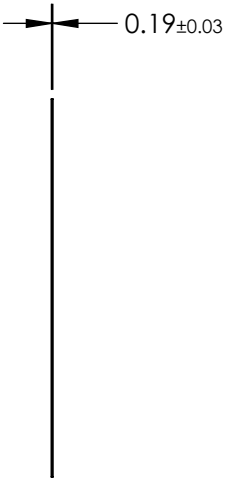
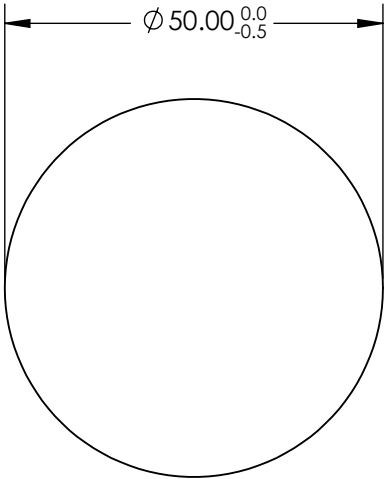
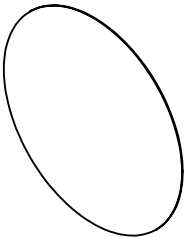


NOTES:

- 1. SUBSTRATE: Polymer Film XP42-18
- 2. WAVELENGTH RANGE: 400 - 700 nm
- 3. POLARIZATION EFFICIENCY (%):  
>99.98 (nominal at 555nm)
- 4. TRANSMISSION (%):  
SINGLE: 42 ±2  
PARALLEL: 36.4  
CROSSED: <0.004 (nominal at 555nm)
- 5. EXTINCTION RATIO: 9000:1 (nominal at 555nm)
- 6. ROHS COMPLIANT



**FOR INFORMATION ONLY:**  
**DO NOT MANUFACTURE**  
**PARTS TO THIS DRAWING**

SPECIFICATIONS SUBJECT TO CHANGE WITHOUT NOTICE  
DIMENSIONS ARE FOR REFERENCE ONLY

THIRD ANGLE PROJECTION		Edmund Optics®		
ALL DIMS IN		TITLE	50mm Dia. Linear Polarizing Film (XP42-18)	
mm		DWG NO	29490	SHEET 9 OF 12