

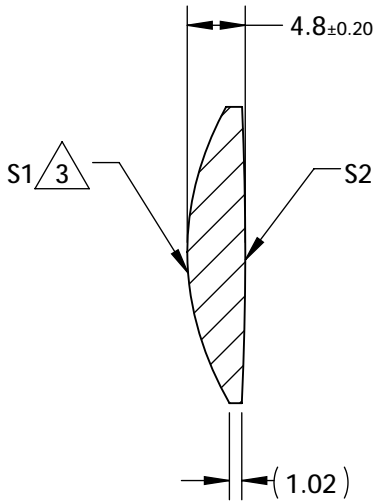
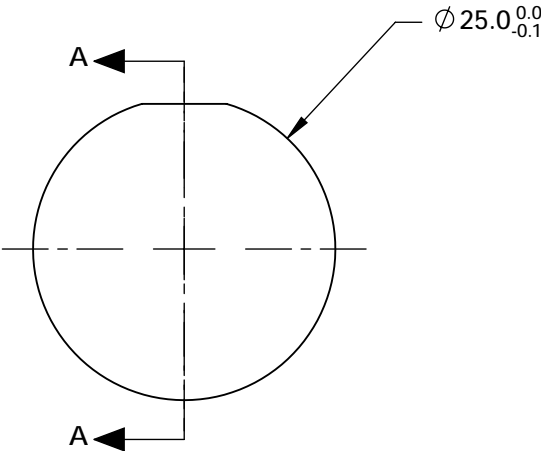
NOTES:

- SUBSTRATE: GRADE A FINE ANNEALED
ZEONEX: K22R
nd=1.531
vd=56.0
- COATING
S1&S2: Ravg <0.7% @ 425 - 675nm

3. ASPHERIC SURFACE DESCRIBED BY (REF. COEFFICIENT TABLE)

$$Z_{ASPH}(Y) = \frac{(\frac{1}{RADIUS}) * Y^2}{1 + \sqrt{1 - (1+k) * (\frac{1}{RADIUS})^2 * Y^2}} + D * Y^2 + E * Y^4 + F * Y^6 + G * Y^8 + H * Y^{10} + J * Y^{12} + L * Y^{14}$$

**FOR INFORMATION ONLY:
DO NOT MANUFACTURE
PARTS TO THIS DRAWING**



SECTION A-A

| COEFFICIENT TABLE 3 | |
|---------------------|------------------|
| COEFFICIENT | S1 |
| k | -1.48 |
| D | 0 |
| E | 8.2672266E-006 |
| F | -2.45756241E-009 |
| G | 0 |
| H | 0 |
| J | 0 |
| L | 0 |

SPECIFICATIONS SUBJECT TO CHANGE WITHOUT NOTICE DIMENSIONS ARE FOR REFERENCE ONLY

| REV. A | S1 | S2 | EFL @ 587.6nm | 40 |  Edmund Optics® | |
|-----------------|----------------------|----------------------|---|-------|--|--|
| SHAPE | CONVEX | CONVEX | BFL @ 587.6nm | 37.09 | | |
| RADIUS | 22.92 | 269.80 |  | | TITLE 25mm DIAMETER X 40mm FL, VIS Coated, K22R PLASTIC ASPHERIC LENS | |
| SURFACE QUALITY | 80-50 | 80-50 | | | | |
| CLEAR APERTURE | Ø 21.5 | Ø 21.5 |  | | DWG NO 21214 | |
| BEVEL MAX | PROTECTIVE AS NEEDED | PROTECTIVE AS NEEDED | | | | |
| | | | ALL DIMS IN | mm | SHEET 1 OF 1 | |