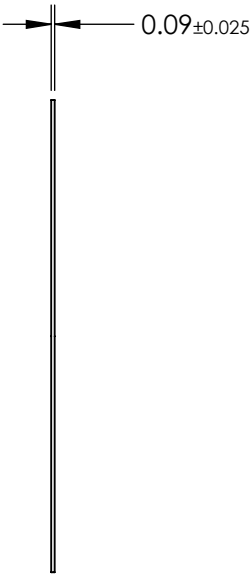
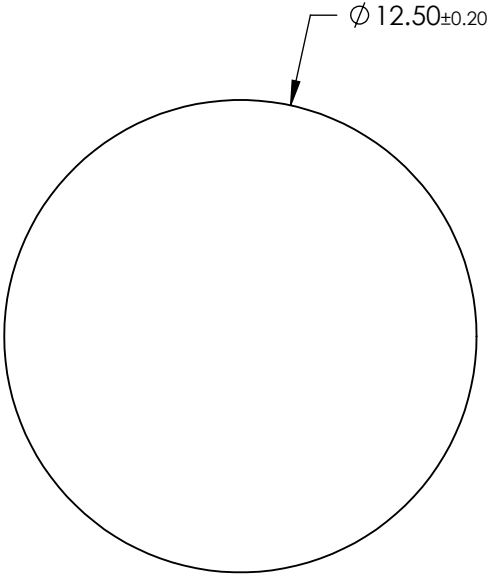
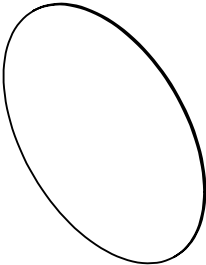

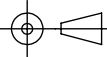


- NOTES:
- 1. SUBSTRATE: SODIUM SILICATE GLASS DOPED WITH SILVER NANOPARTICLES
  - 2. COATING: Uncoated
  - 3. TYPICAL ENERGY DENSITY LIMIT: 10 W/cm2
  - 4. EXTINCTION RATIO: >10,000:1
  - 5. WAVELENGTH RANGE: 1260-1360
  - 6. ROHS COMPLIANT



**FOR INFORMATION ONLY:  
DO NOT MANUFACTURE  
PARTS TO THIS DRAWING**

SPECIFICATIONS SUBJECT TO CHANGE WITHOUT NOTICE  
DIMENSIONS ARE FOR REFERENCE ONLY

	S1	S2	 <b>Edmund Optics®</b>			
SHAPE	PLANO	PLANO				
SURFACE QUALITY	40 - 20	40 - 20		TITLE Ultra-Thin Polarizer, 1310nm, 12.5mm Dia, Unc.		
TRANSMISSION (%)	>87	>87				
ACCEPTANCE ANGLE	±20°	±20°				
BEVEL MAX FACE	PROTECTED AS NEEDED	PROTECTED AS NEEDED	ALL DIMS IN	mm	DWG NO 26642	SHEET 3 OF 12