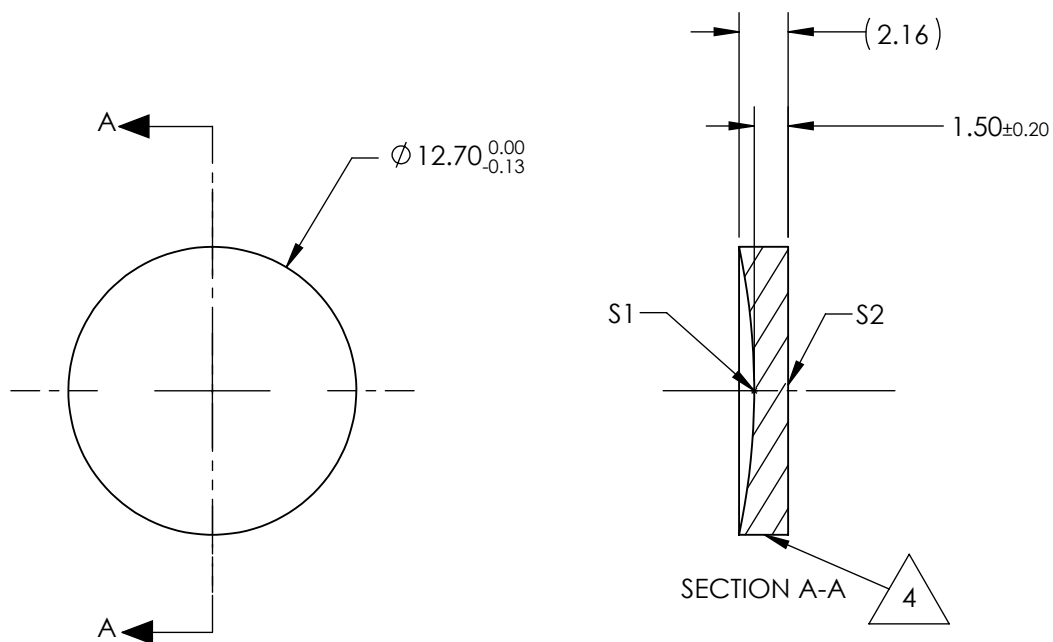


NOTES:

1. SUBSTRATE:
Calcium Fluoride, IR Grade (CaF₂)
2. CENTERING TOLERANCE:
<3 ARCMIN
3. COATING (APPLY ACROSS CLEAR APERTURE)
S1 & S2: NONE
4. FINE GRIND SURFACE
5. FOCAL LENGTH TOLERANCE: ±2%
6. ROHS COMPLIANT



**FOR INFORMATION ONLY:
DO NOT MANUFACTURE
PARTS TO THIS DRAWING**

SPECIFICATIONS SUBJECT TO CHANGE WITHOUT NOTICE
DIMENSIONS ARE FOR REFERENCE ONLY

| | | | | | | | |
|-------------------------|---------------------|---------------------|---|-------|---|--|-----------------|
| | S1 | S2 | EFL @ 5μm | -76.2 |  Edmund Optics® | | |
| SHAPE | CONCAVE | PLANO | BFL @ 5μm | -78 | | | |
| RADIUS | 30.69 | INFINITY |  | | TITLE | 12.7mm Dia. x 76.2mm FL, Uncoated, ISP Optics Calcium Fluoride (CaF ₂) PCV Lens | |
| IRREGULARITY AT 632.8nm | λ | λ | | | | | |
| SURFACE QUALITY | 60-40 | 60-40 | ALL DIMS IN | | DWG NO | 24780 | |
| CLEAR APERTURE | ø11.43 | ø11.43 | | | | | |
| BEVEL | PROTECTED AS NEEDED | PROTECTED AS NEEDED | mm | | | | SHEET 1 OF 1 |