

NOTES:

1. SUBSTRATE:

Germanium (Ge)

2. CENTERING TOLERANCE:

<3 ARCMIN

3. COATING (APPLY ACROSS CLEAR APERTURE)

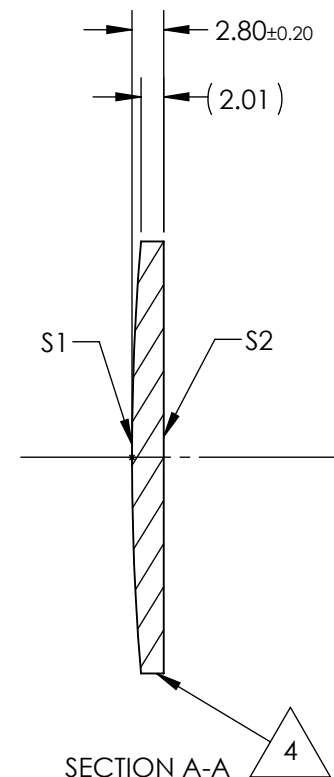
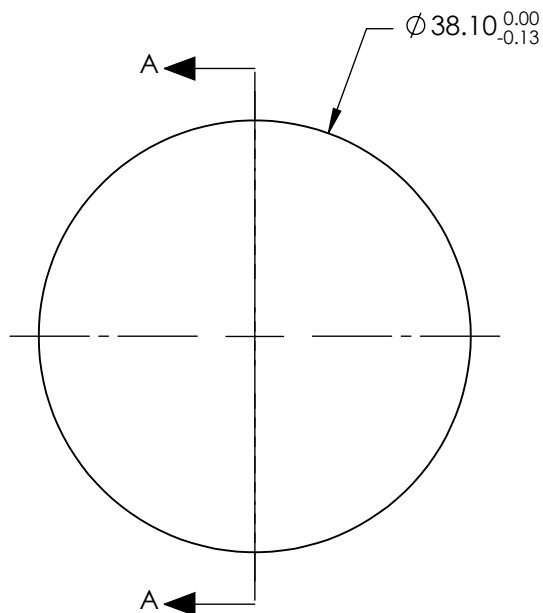
S1 & S2: NONE



FINE GRIND SURFACE


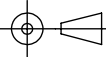
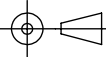
5. FOCAL LENGTH TOLERANCE: $\pm 2\%$

6. ROHS COMPLIANT



**FOR INFORMATION ONLY:
DO NOT MANUFACTURE
PARTS TO THIS DRAWING**

SPECIFICATIONS SUBJECT TO CHANGE WITHOUT NOTICE
DIMENSIONS ARE FOR REFERENCE ONLY

	S1	S2	EFL @ 10.6 μ m	75.0	 Edmund Optics®		
SHAPE	CONVEX	PLANO	BFL @ 10.6 μ m	75.57			
RADIUS	229.1	INFINITY			TITLE	38.1mm Dia. x 76.2mm FL, Uncoated, ISP Optics Germanium (Ge) PCX Lens	
IRREGULARITY AT 10.6 μ m	$\lambda/20$	$\lambda/20$					
SURFACE QUALITY	60-40	60-40			DWG NO	24854	
CLEAR APERTURE	$\varnothing 34.29$	$\varnothing 34.29$					
BEVEL	PROTECTED AS NEEDED	PROTECTED AS NEEDED	ALL DIMS IN	mm			SHEET 1 OF 1