

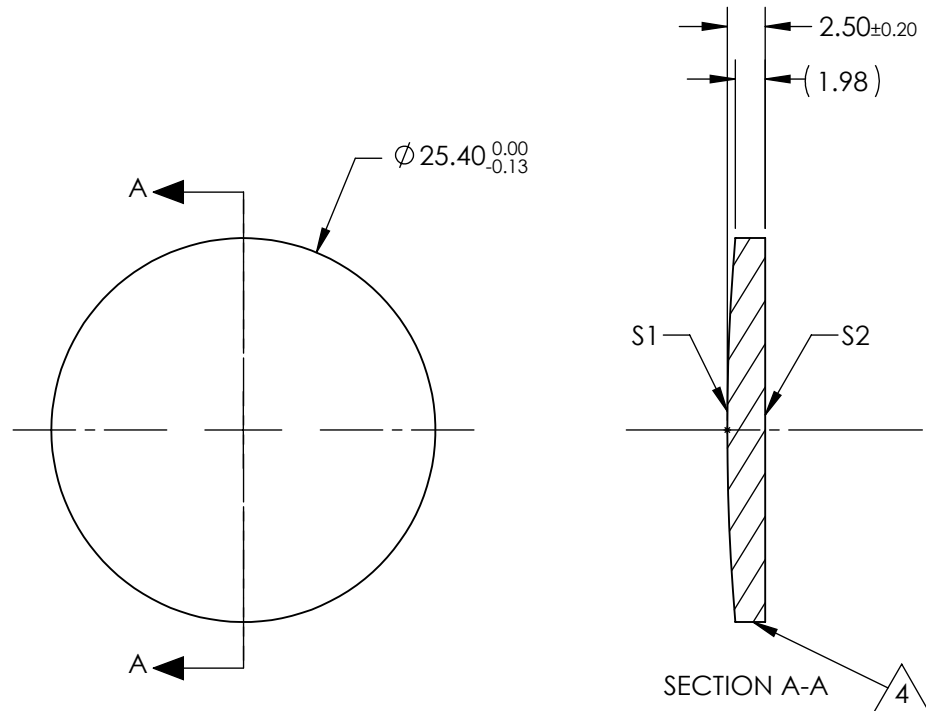
NOTES:

1. SUBSTRATE:  
Silicon (Si)
2. CENTERING TOLERANCE:  
<3 ARCMIN
3. COATING (APPLY ACROSS CLEAR APERTURE)  
S1 & S2: R(AVG) <0.5% @ 3 - 5µm  
R(ABS) <1.5% @ 3 - 5µm

4. FINE GRIND SURFACE

5. FOCAL LENGTH TOLERANCE: ±2%

6. ROHS COMPLIANT



**FOR INFORMATION ONLY:  
DO NOT MANUFACTURE  
PARTS TO THIS DRAWING**

SPECIFICATIONS SUBJECT TO CHANGE WITHOUT NOTICE  
DIMENSIONS ARE FOR REFERENCE ONLY

	S1	S2	EFL @ 4µm	63.5	 <b>Edmund Optics®</b>		
SHAPE	CONVEX	PLANO	BFL @ 4µm	62.84			
RADIUS	154.17	INFINITY			TITLE	25.4mm Dia. x 63.5mm FL, 3-5µm BBAR Coated, ISP Optics Silicon (Si) PCX Lens	
IRREGULARITY AT 632.8nm	1λ	1λ					
SURFACE QUALITY	80-50	80-50	ALL DIMS IN		DWG NO	24892	
CLEAR APERTURE	ø22.86	ø22.86					
BEVEL	PROTECTED AS NEEDED	PROTECTED AS NEEDED					SHEET 1 OF 1