

NOTES:

1. SUBSTRATE:

Germanium (Ge)

2. CENTERING TOLERANCE:

<3 ARCMIN

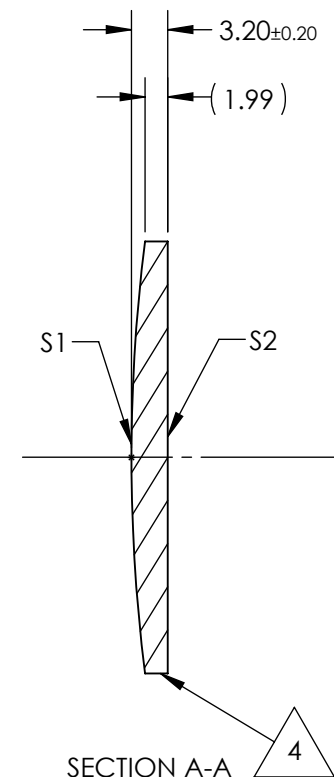
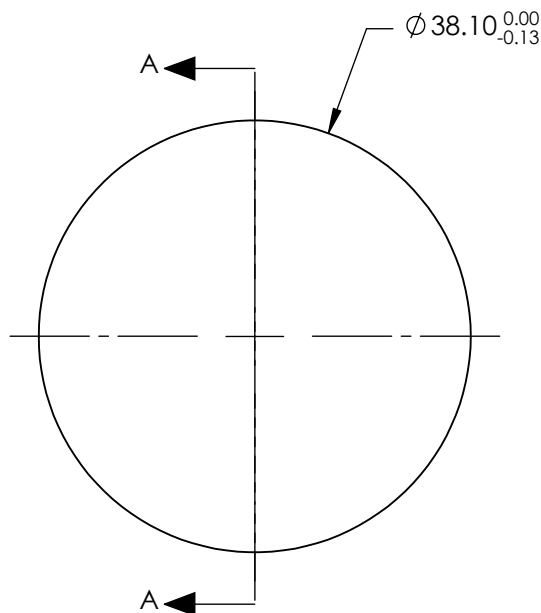
3. COATING (APPLY ACROSS CLEAR APERTURE)

S1 & S2: NONE

4. FINE GRIND SURFACE


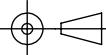
5. FOCAL LENGTH TOLERANCE:  $\pm 2\%$

6. ROHS COMPLIANT



**FOR INFORMATION ONLY:  
DO NOT MANUFACTURE  
PARTS TO THIS DRAWING**

SPECIFICATIONS SUBJECT TO CHANGE WITHOUT NOTICE  
DIMENSIONS ARE FOR REFERENCE ONLY

	S1	S2	EFL @ 10.6 $\mu$ m	50.8	 <b>Edmund Optics®</b>		
SHAPE	CONVEX	PLANO	BFL @ 10.6 $\mu$ m	49.47			
RADIUS	151.01	INFINITY	THIRD ANGLE PROJECTION 		TITLE	38.1mm Dia. x 50.8mm FL, Uncoated, ISP Optics Germanium (Ge) PCX Lens	
IRREGULARITY AT 10.6 $\mu$ m	$\lambda/20$	$\lambda/20$					
SURFACE QUALITY	60-40	60-40	ALL DIMS IN		DWG NO	24852	
CLEAR APERTURE	$\varnothing 34.29$	$\varnothing 34.29$					
BEVEL	PROTECTED AS NEEDED	PROTECTED AS NEEDED	mm				SHEET 1 OF 1