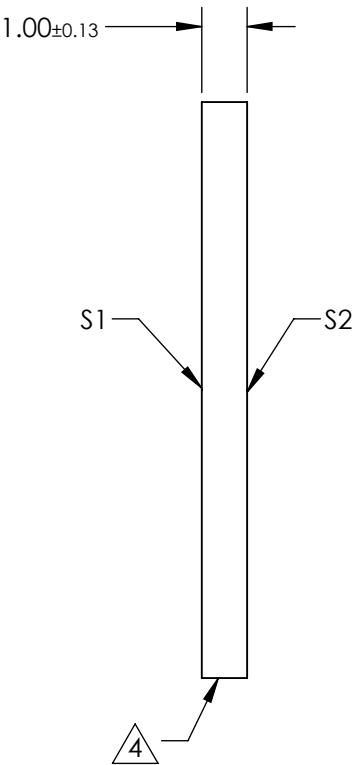
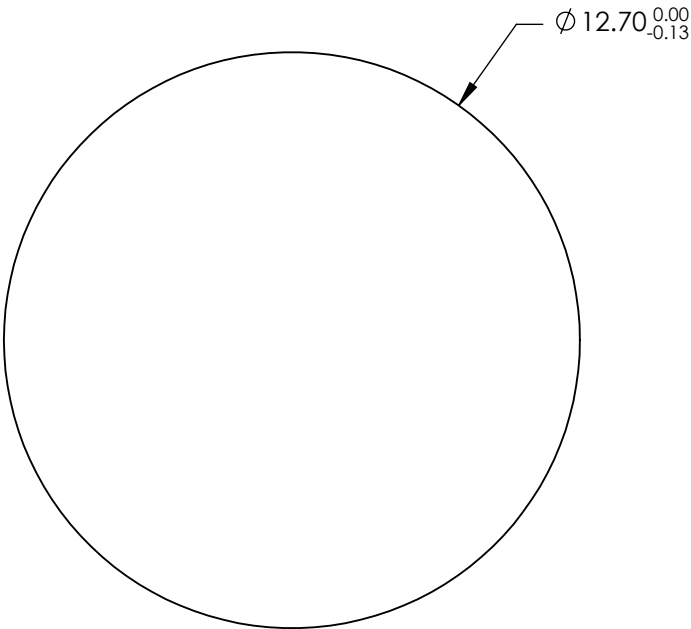


- NOTES:
- 1. SUBSTRATE:
Zinc Sulfide, Clear Grade
 - 2. PARALLELISM:
SURFACE S2 TO BE PARALLEL WITH SURFACE S1 TO <3 ARCMIN
 - 3. COATING:
S1 & S2: NONE

4. FINE GRIND SURFACE

5. ROHS COMPLIANT



**FOR INFORMATION ONLY:
DO NOT MANUFACTURE
PARTS TO THIS DRAWING**


SPECIFICATIONS SUBJECT TO CHANGE WITHOUT NOTICE
DIMENSIONS ARE FOR REFERENCE ONLY

| | S1 | S2 |
|------------------|-----------------------------|-----------------------------|
| SHAPE | PLANO | PLANO |
| SURFACE QUALITY | 60-40 | 60-40 |
| SURFACE FLATNESS | $\lambda/20$ @ 10.6 μ m | $\lambda/20$ @ 10.6 μ m |
| CLEAR APERTURE | $\varnothing 10.79$ | $\varnothing 10.79$ |
| BEVEL | PROTECTED AS NEEDED | PROTECTED AS NEEDED |

THIRD ANGLE
PROJECTION

ALL DIMS IN

mm

 Edmund Optics®

TITLE

12.7mm Dia., 1mm Thick, Uncoated, ISP
Optics Zinc Sulfide (ZnS) Window

DWG NO

24687

SHEET

160 OF 175