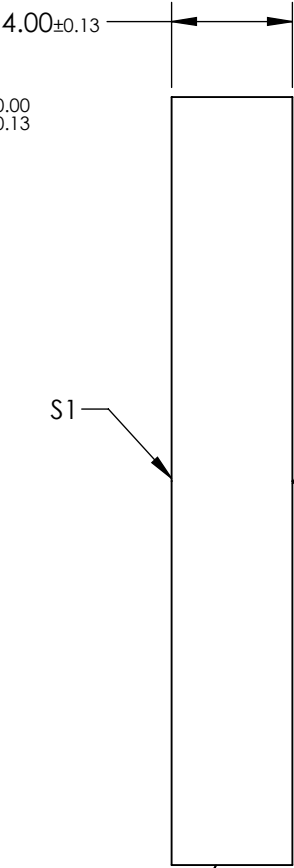
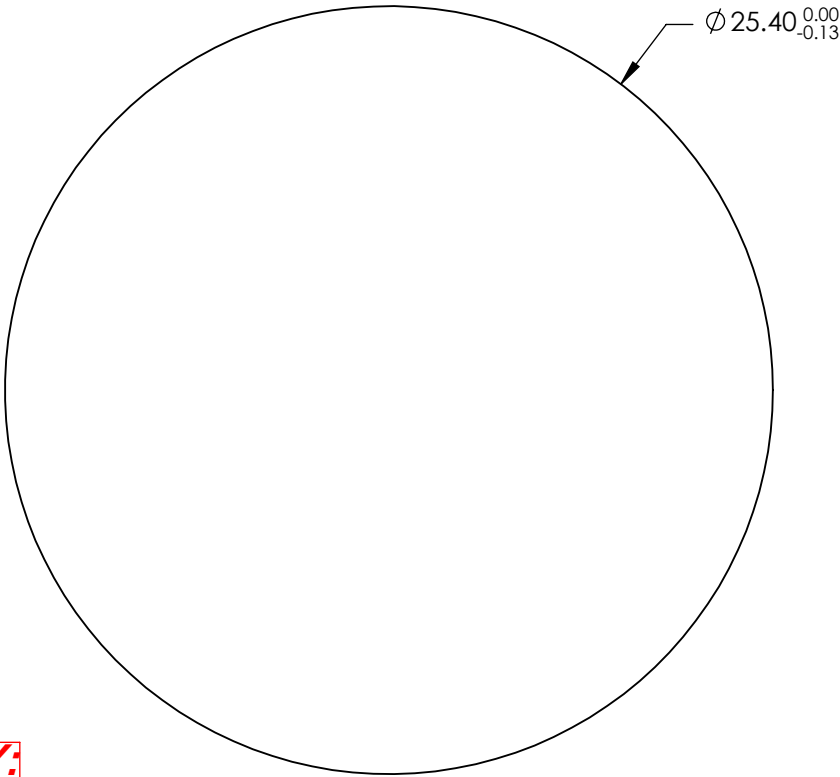


NOTES:

- 1. SUBSTRATE:
Zinc Selenide (ZnSe)
- 2. PARALLELISM:
SURFACE S2 TO BE PARALLEL WITH SURFACE S1 TO <3 ARCMIN
- 3. COATING:
S1 & S2: R(AVG) <3.0% @ 2 - 13µm
R(ABS) <6% @ 2 - 13µm

4. FINE GRIND SURFACE

5. ROHS COMPLIANT



**FOR INFORMATION ONLY:
DO NOT MANUFACTURE
PARTS TO THIS DRAWING**

SPECIFICATIONS SUBJECT TO CHANGE WITHOUT NOTICE
DIMENSIONS ARE FOR REFERENCE ONLY

	S1	S2
SHAPE	PLANO	PLANO
SURFACE QUALITY	60-40	60-40
SURFACE FLATNESS	$\lambda/20$ @ 10.6µm	$\lambda/20$ @ 10.6µm
CLEAR APERTURE	Ø21.59	Ø21.59
BEVEL	PROTECTED AS NEEDED	PROTECTED AS NEEDED



ALL DIMS IN

mm

Edmund Optics®

TITLE

25.4mm Dia., 4mm Thick, 2-13µm BBAR
Coated, ISP Optics Zinc Selenide (ZnSe)
Window

DWG NO

24672

SHEET
151 OF 175