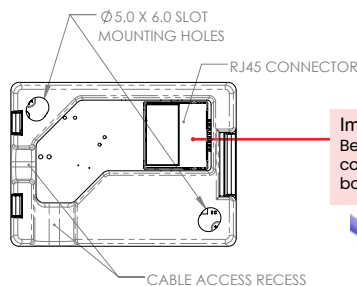
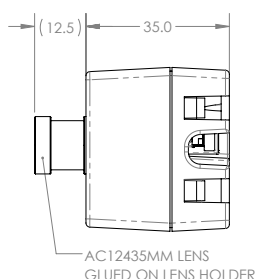
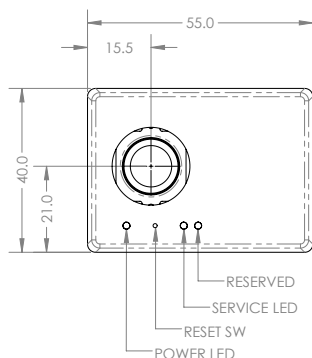


WITH BACK COVER



Important!
Because of space limitations, molded connector is not support. Use only bootless connector.



Sensor Properties

Sensor Model	Sony IMX500 Color CMOS
Shutter Type	Rolling shutter
Sensor Size	1/2.3" (Diag 7.857mm)
Resolution	12.33 MP, 4056 x 3040px
Pixel Size	1.55 μ m

Controller Properties

Controller Module	ESP32-WROVER-E
Processor	Two low-power Xtensa® 32-bit LX6 microprocessors
RAM	520KB on-chip SRAM, 8MB PSRAM
Storage	16MB SPI flash

Physical Properties

Dimensions	55 x 40 x 35 (excludes lens protrusion)
Lens Mount	S-Mount
Weight	48 g
Focal length	4.35mm
Focus Type	Fixed Focus (Focused at 3m*) *Performance varies depending on application.
Field of View (DxHxV)	85.5° x 71.6° x 56.8°
Aperture	F3.0
TV Distortion	<0.58%

Interface and Power Information

Digital Interface	100BASE-T RJ45, PoE
Power Requirement	PoE (IEEE 802.3af)
Power Consumption	3W (max) via PoE

Standard and Certifications

Compliance	CE, FCC, ISED, MIC, RoHS, REACH, WEEE
Storage Temperature	-30° to 60°C
Operating Temperature	0° to 40°C ambient

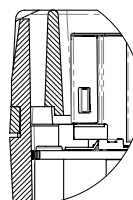
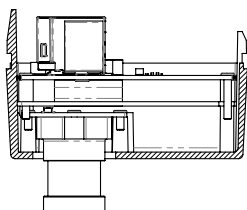
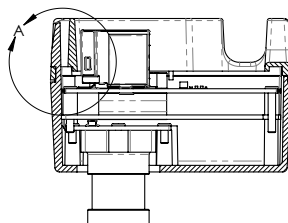
Humidity Operating: 20% ~ 80%, relative, non-condensing

(Drawings continued on next page)

BACK COVER REMOVED

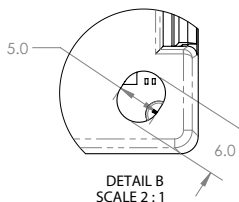
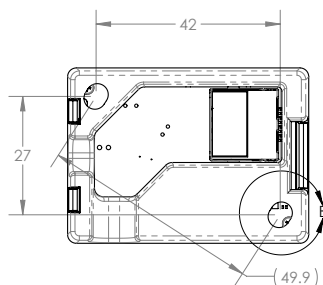


BACK COVER SNAPPED IN



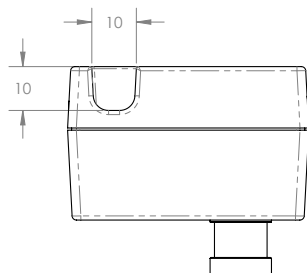
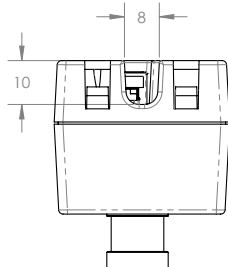
DETAIL A
SCALE 2:1

MOUNTING HOLES



DETAIL B
SCALE 2:1

CABLE ACCESS RECESS



INSTALLATION WITH #8 SCREW

