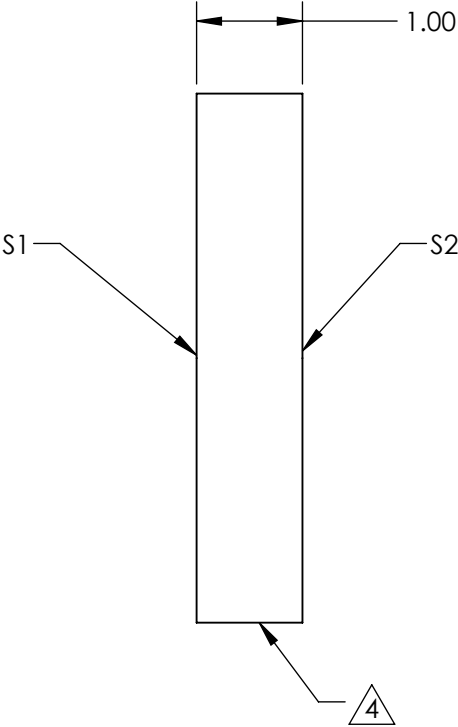
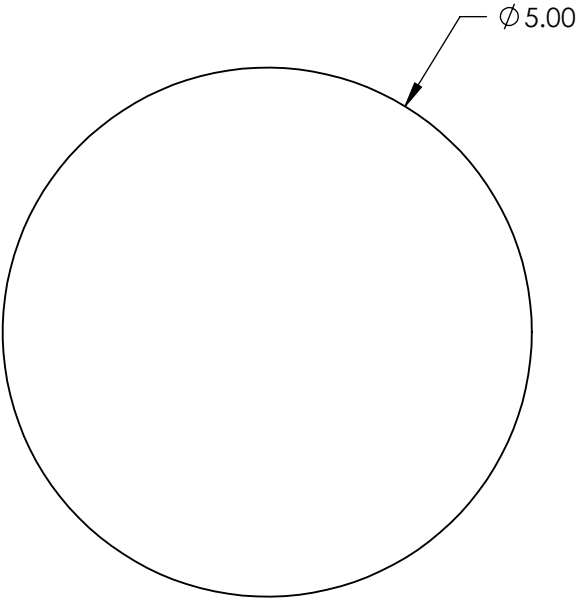


- NOTES:
- 1. SUBSTRATE: N-BK7
 - 2. S2 TO BE PARALLEL WITH S1 TO <1 ARCMIN
 - 3. COATING (APPLY ACROSS CLEAR APERTURE)

S1: VIS-EXT (350-700nm)
S2: VIS-EXT (350-700nm)
Ravg <0.5% @ 350 - 700nm

4. FINE GRIND SURFACE

5. ROHS COMPLIANT



FOR INFORMATION ONLY:
DO NOT MANUFACTURE
PARTS TO THIS DRAWING

SPECIFICATIONS SUBJECT TO CHANGE WITHOUT NOTICE
DIMENSIONS ARE FOR REFERENCE ONLY

	S1	S2
SHAPE	PLANO	PLANO
SURFACE QUALITY	60-40	60-40
CLEAR APERTURE	Ø 4.50	Ø 4.50
BEVEL	PROTECTED AS NEEDED	PROTECTED AS NEEDED

THIRD ANGLE
PROJECTION

ALL DIMS IN mm

 Edmund Optics®

TITLE	5mm Dia., 1mm Thick, VIS-EXT Coated λ/4 N-BK7 Window	
DWG NO	23443	SHEET 57 OF 84