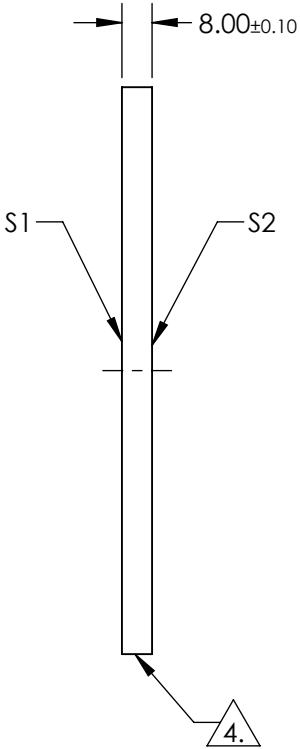
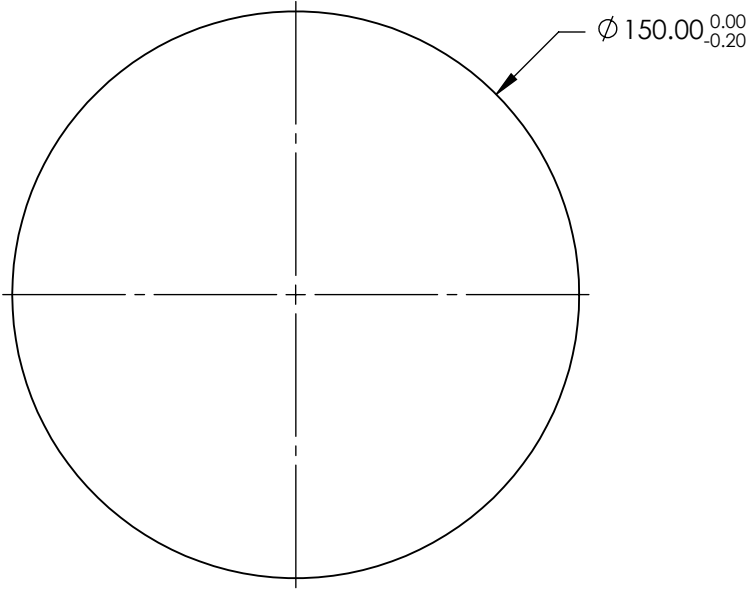


NOTES:

- 1. SUBSTRATE: FUSED SILICA (CORNING 7980)
- 2. COATING (APPLY ACROSS CLEAR APERTURE)  
S1 & S2: R(AVG)  $\leq 0.4\%$  FROM 425 - 675nm
- 3. SURFACE S1 TO BE PARALLEL WITH SURFACE S2 TO WITHIN < 10 ARCSEC

4. FINE GRIND SURFACE

5. ROHS COMPLIANT

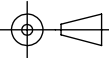


**FOR INFORMATION ONLY:  
DO NOT MANUFACTURE  
PARTS TO THIS DRAWING**

SPECIFICATIONS SUBJECT TO CHANGE WITHOUT NOTICE  
DIMENSIONS ARE FOR REFERENCE ONLY

	S1	S2
SHAPE	PLANO	PLANO
SURFACE QUALITY	40-20	40-20
CLEAR APERTURE	$\phi 135.00$	$\phi 135.00$
BEVEL	PROTECTED AS NEEDED	PROTECTED AS NEEDED

THIRD ANGLE  
PROJECTION



ALL DIMS IN

mm



**Edmund Optics®**

TITLE

150mm Dia., 8mm Thick, VIS 0° Coated  $\lambda/10$   
Fused Silica Window

DWG NO

22069

SHEET  
1 OF 1