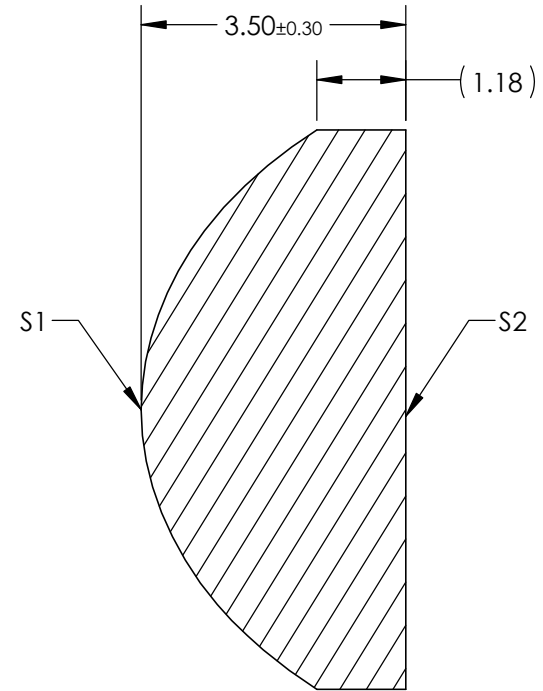
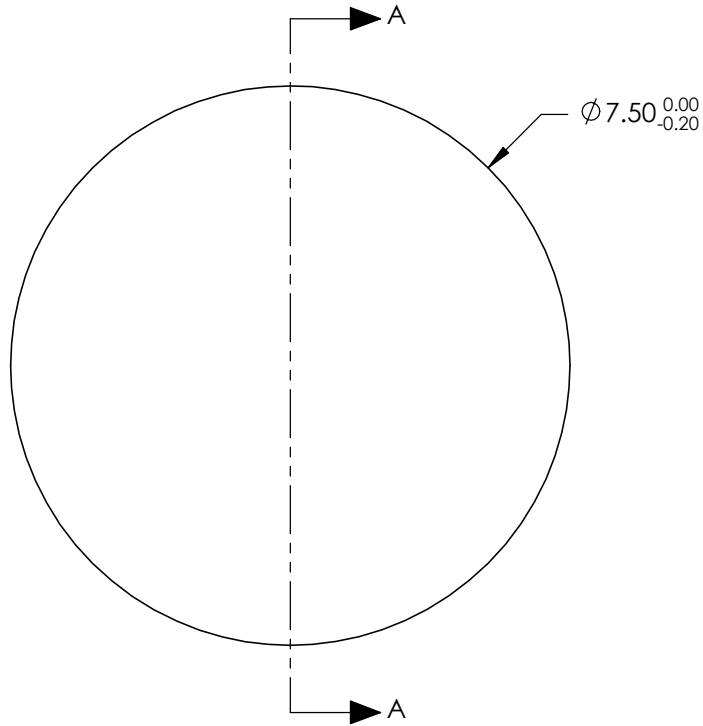


- NOTES:
- 1. SUBSTRATE:
H-K51
 - 2. COATING (APPLY ACROSS CLEAR APERTURE)


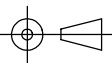
S1 & S2: MgF2 (400-700nm)
R(AVG) ≤ 1.75% @ 400 - 700nm
 - 3. CENTERING: ≤30 ARCMIN



SECTION A-A

**FOR INFORMATION ONLY:
DO NOT MANUFACTURE
PARTS TO THIS DRAWING**

SPECIFICATIONS SUBJECT TO CHANGE WITHOUT NOTICE
DIMENSIONS ARE FOR REFERENCE ONLY

	S1	S2	EFL @ 587.6nm	6.60	 Edmund Optics®		
			BFL @ 587.6nm	4.3			
SHAPE	CONVEX	PLANO			TITLE	7.5mm Dia. x 6.6mm FL, MgF2 Coated, Aspheric Condenser Lens	
SURFACE QUALITY	80-50 (typical) (typical)	80-50 (typical) (typical)					
CLEAR APERTURE	Ø 6.75	Ø 6.75			DWG NO	21192	SHEET 1 OF 1
BEVEL	PROTECTED AS NEEDED	PROTECTED AS NEEDED	ALL DIMS IN	mm			