

NOTES:

1. SUBSTRATE: UV Grade MgF2
2. SURFACE S2 TO BE PARALLEL WITH SURFACAE S1 TO WITHIN 1 ARCMIN
3. COATING (APPLY ACROSS CLEAR APERTURE)

OPTICAL DENSITY = 0.5 +0.10/-0.05 FROM 120 - 200nm

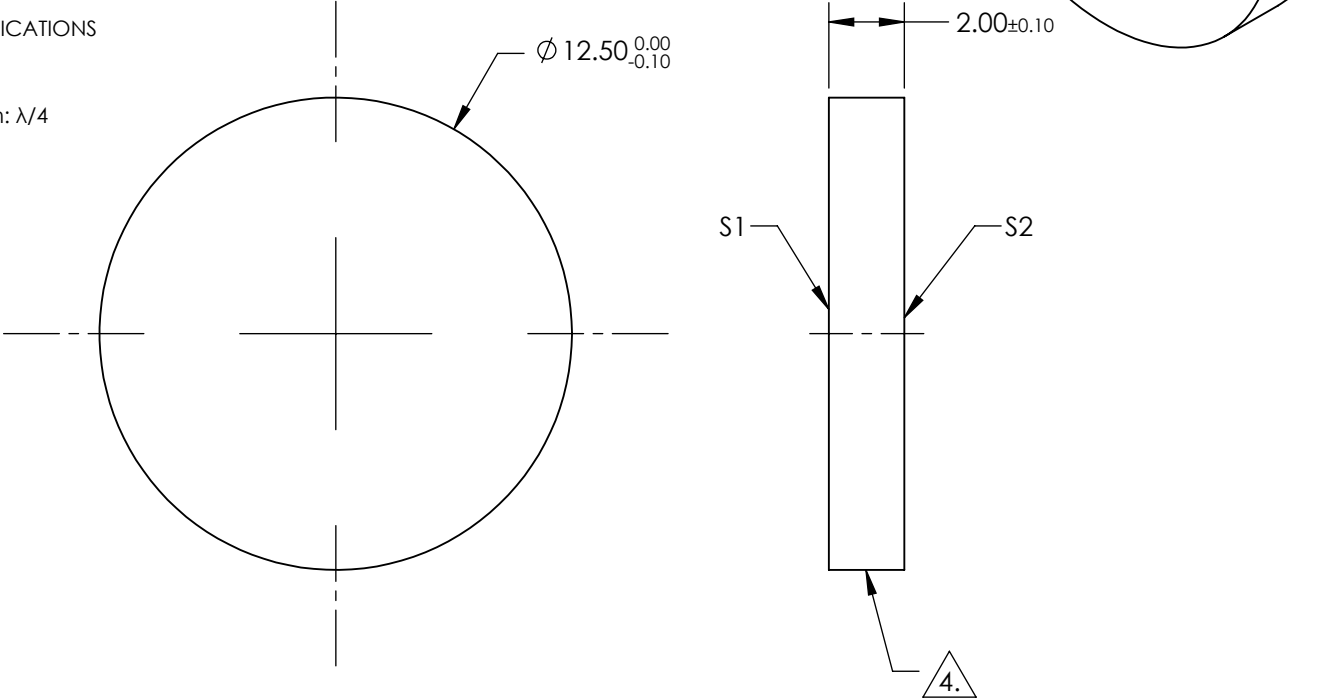
S1: COATED
S2: UNCOATED

**FOR INFORMATION ONLY:
DO NOT MANUFACTURE
PARTS TO THIS DRAWING**


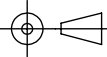
4. FINE GRIND SURFACE (ADD INK NOTE AS NEEDED)

5. POWER, IRREGULARITY, AND SURFACE QUALITY SPECIFICATIONS
APPLY ACROSS CLEAR APERTURE

6. TRANSMITTED WAVEFRONT DISTORTION P-V @ 632.8nm: $\lambda/4$



SPECIFICATIONS SUBJECT TO CHANGE WITHOUT NOTICE
DIMENSIONS ARE FOR REFERENCE ONLY

	S1	S2	 Edmund Optics®			
SHAPE	PLANO	PLANO				
SURFACE QUALITY	40-20	40-20		TITLE		
CLEAR APERTURE	Ø 10	Ø 10		0.5 OD 12.5mm Diameter VUV ND Filter		
COATING APERTURE	Ø 10	Ø 10				
BEVEL	PROTECTED AS NEEDED	PROTECTED AS NEEDED	ALL DIMS IN	mm	DWG NO	20133
					SHEET 1 OF 1	