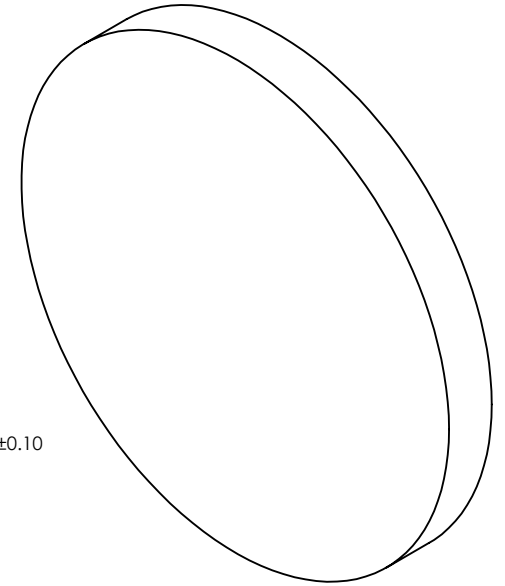
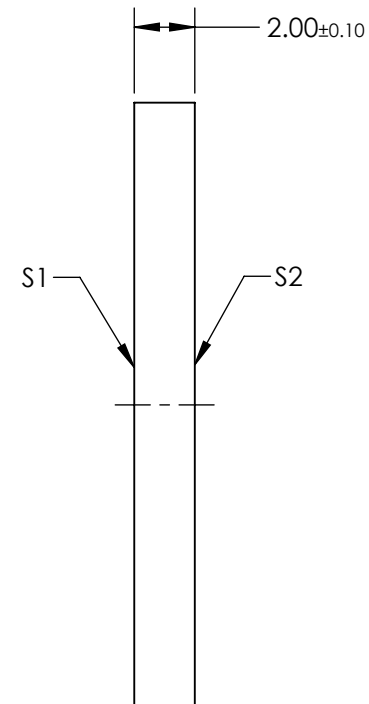
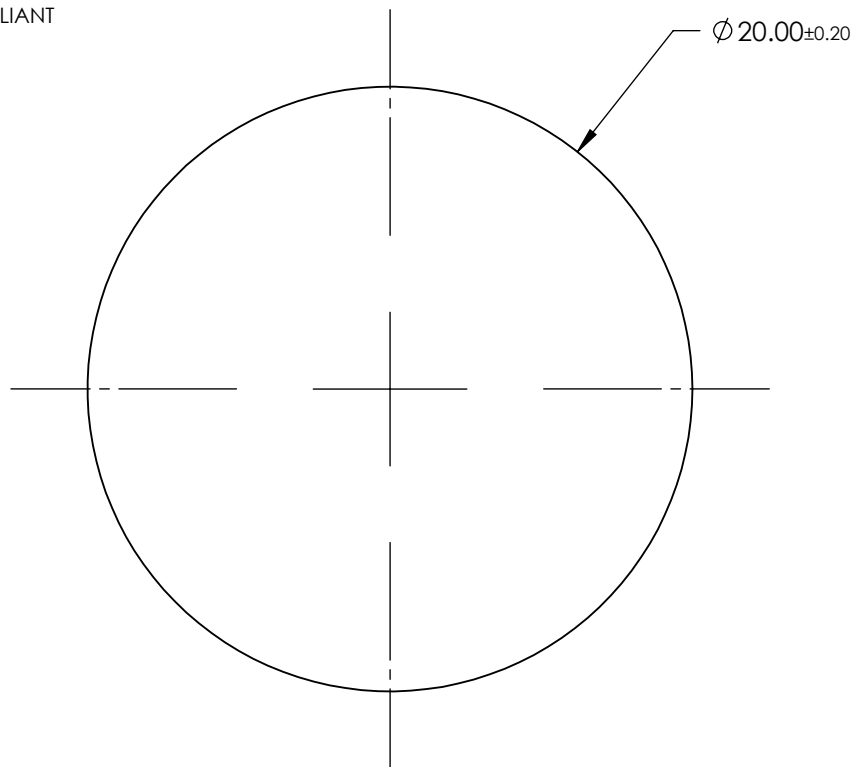


NOTES:

1. SUBSTRATE:
CP42HE Laminated Between Glass
2. OPERATING TEMPERATURE: -40 to +80 °C
3. COATING (APPLY ACROSS CLEAR APERTURE)

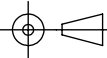
S1 & S2: Uncoated
4. EFFICIENCY OF LINEAR COMPONENT: >99.90 %
5. WAVELENGTH RANGE: 400 - 700 nm
6. ROHS COMPLIANT



**FOR INFORMATION ONLY:
DO NOT MANUFACTURE
PARTS TO THIS DRAWING**

SPECIFICATIONS SUBJECT TO CHANGE WITHOUT NOTICE
DIMENSIONS ARE FOR REFERENCE ONLY

EO[®] Edmund Optics[®]

THIRD ANGLE PROJECTION 	TITLE		20mm Dia. Left-Handed Uncoated Glass Circular Polarizer (CP42HE)	
	ALL DIMS IN	mm	DWG NO	19928
				SHEET 1 OF 1