
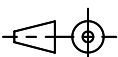
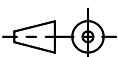
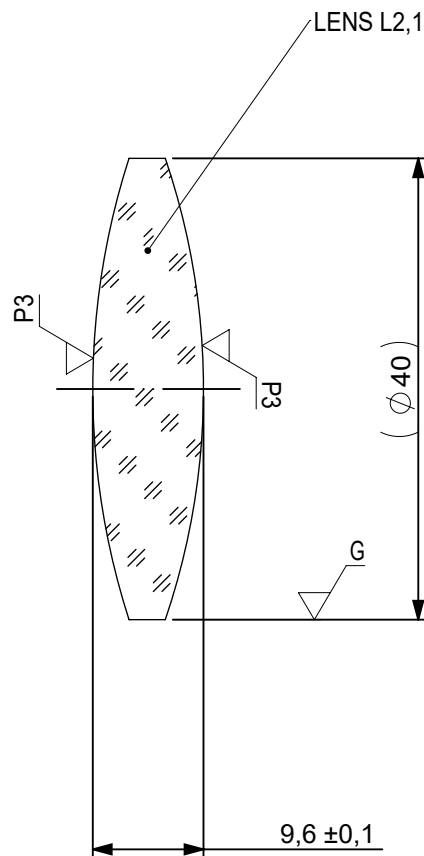




FOCAL LENGTH (EFL): 120 ±1,2  
 BACK FOCAL LENGTH (BFL): 111

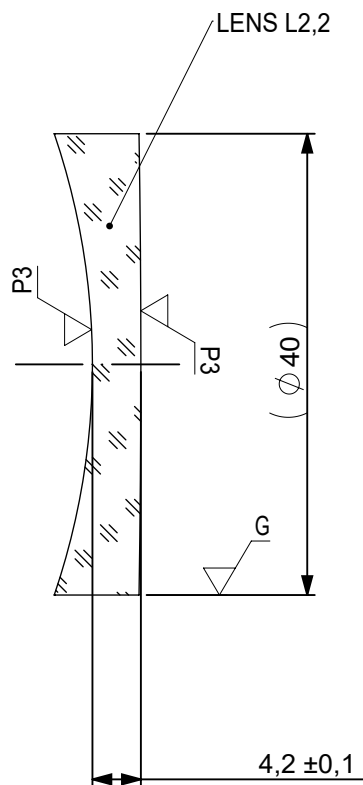
SURFACE A			SURFACE B			SURFACE C						
Øe 39			Øe 39			Øe 39						
			CEMENT: NOA 61 OR EQUIVALENT									
PROTECTIVE CHAMFERS AS NEEDED			FIRST ANGLE PROJECTION		<div> Edmund Optics®</div>							
ROHS: COMPLIANT	SCALE: NONE	λ = 587,6nm										
SPECIFICATIONS SUBJECT TO CHANGE WITHOUT NOTICE. DIMENSIONS ARE FOR REFERENCE ONLY					TITLE 40mm Dia x 120mm FL, YAG-BBAR Coated, Achromatic Lens							
FOR INFORMATION ONLY: DO NOT MANUFACTURE PARTS TO THIS DRAWING												
INDICATIONS IN ACCORDANCE WITH ISO 10110			ALL DIMS IN:	mm	DWG NO			19419		SHEET SIZE	A4	SHEET 1 OF 3



- 1 YAG-BBAR  
 R(ABS) < 0,25% @ 532nm @ 0° AOI  
 R(ABS) < 0,25% @ 1064nm @ 0° AOI  
 R(AVG) < 1,0% FROM 500-1100nm @ 0° AOI

LEFT SURFACE	MATERIAL	RIGHT SURFACE
R 65,22 CX Øe 39 (λ) SEE NOTE 1 3/ 3 (0,5) λ=632,8 nm 4/ - 5/ 40 - 20 6/ -	GLASS N-SSK8 618/498 Nd: 1,618 Vd: 49,83	R 62,03 CX Øe 39 (λ) - 3/ 3 (0,5) λ=632,8 nm 4/ - 5/ 40 - 20 6/ -

PROTECTIVE CHAMFERS AS NEEDED			FIRST ANGLE PROJECTION 	 Edmund Optics®			
ROHS: COMPLIANT	SCALE: NONE	$\lambda = 587,6\text{nm}$		TITLE	40mm Dia x 120mm FL, YAG-BBAR Coated, Achromatic Lens		
SPECIFICATIONS SUBJECT TO CHANGE WITHOUT NOTICE. DIMENSIONS ARE FOR REFERENCE ONLY			ALL DIMS IN: mm	DWG NO	19419	SHEET SIZE A4	SHEET 2 OF 3
FOR INFORMATION ONLY: DO NOT MANUFACTURE PARTS TO THIS DRAWING							
INDICATIONS IN ACCORDANCE WITH ISO 10110							



- 1 YAG-BBAR  
R(ABS) < 0,25% @ 532nm @ 0° AOI  
R(ABS) < 0,25% @ 1064nm @ 0° AOI  
R(AVG) < 1,0% FROM 500-1100nm @ 0° AOI

LEFT SURFACE	MATERIAL	RIGHT SURFACE
R 62,03 CV Øe 39 (λ) - 3/ 3 (0,5) λ=632,8 nm 4/ - 5/ 40 - 20 6/ -	GLASS N-SF10 728/284 Nd: 1,728 Vd: 28,53	R 1240,67 CX Øe 39 (λ) SEE NOTE 1 3/ 3 (0,5) λ=632,8 nm 4/ - 5/ 40 - 20 6/ -

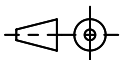
PROTECTIVE CHAMFERS AS NEEDED

ROHS:  
COMPLIANT

SCALE:  
NONE

λ = 587,6nm

FIRST ANGLE  
PROJECTION



SPECIFICATIONS SUBJECT TO CHANGE WITHOUT  
NOTICE. DIMENSIONS ARE FOR REFERENCE ONLY

FOR INFORMATION ONLY: DO NOT MANUFACTURE  
PARTS TO THIS DRAWING

INDICATIONS IN ACCORDANCE WITH ISO 10110

ALL DIMS  
IN:

mm



Edmund Optics®

TITLE

40mm Dia x 120mm FL, YAG-BBAR  
Coated, Achromatic Lens

DWG NO

19419

SHEET  
SIZE A4

SHEET  
3 OF 3