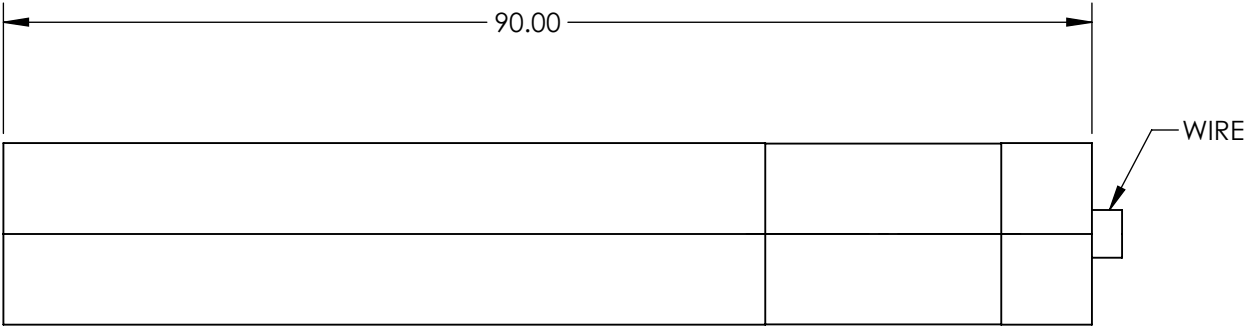
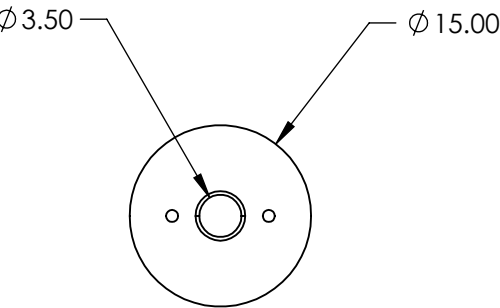
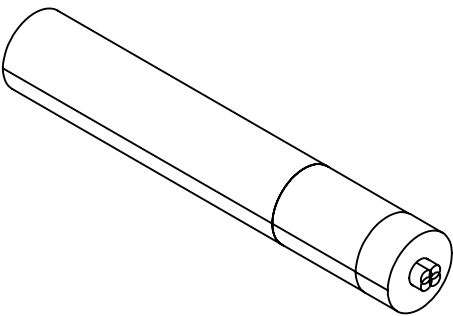


NOTES:

- 1. LASER CLASS: IIIb
- 2. MODULATION FREQUENCY: 0-1kHz
- 3. OPERATING TEMPERATURE: 15 to 35°C  
OPERATING VOLTAGE: 3 V
- 4. OUTPUT POWER: 25 mW
- 5. WAVELENGTH RANGE: 1064 ±2nm



SPECIFICATIONS SUBJECT TO CHANGE WITHOUT NOTICE  
DIMENSIONS ARE FOR REFERENCE ONLY

**FOR INFORMATION ONLY:  
DO NOT MANUFACTURE  
PARTS TO THIS DRAWING**

**EO<sup>®</sup> Edmund Optics<sup>®</sup>**

THIRD ANGLE PROJECTION		TITLE	25mW, 1064nm DPSS Pointing Laser	
ALL DIMS IN	mm	DWG NO	19473	SHEET 1 OF 1