

NOTES:

1. SUBSTRATE MATERIAL:  
NITROCELLULOSE

2. COATING (APPLY ACROSS COATING APERTURE)

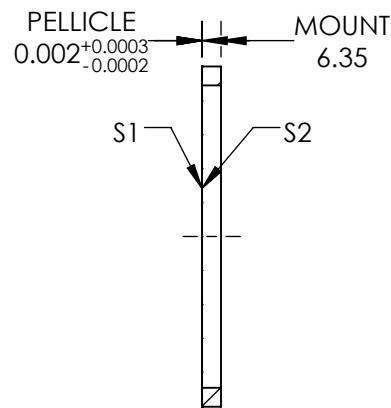
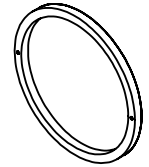
S1: NONE

45% R @ 3000 - 5000nm @ 45° AOI

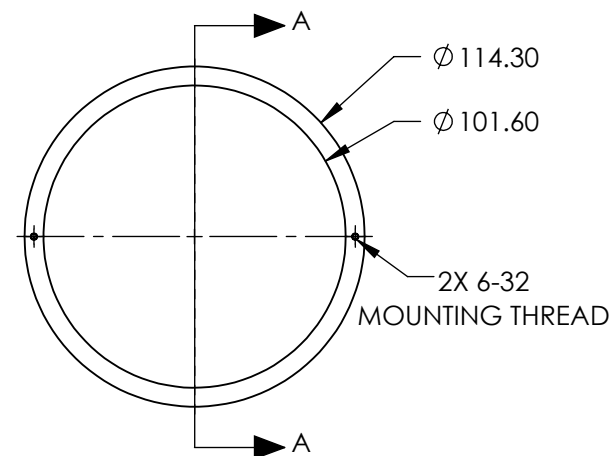
55% T @ 3000 - 5000nm @ 45° AOI

S2: NONE

3. ROHS : COMPLIANT



SECTION A-A



**FOR INFORMATION ONLY:  
DO NOT MANUFACTURE  
PARTS TO THIS DRAWING**

SPECIFICATIONS SUBJECT TO CHANGE WITHOUT NOTICE  
DIMENSIONS ARE FOR REFERENCE ONLY

	S1	S2
SHAPE	PLANO	PLANO
SURFACE QUALITY	40-20	40-20
CLEAR APERTURE	Ø101.60	Ø101.60
BEVEL	PROTECTIVE AS NEEDED	PROTECTIVE AS NEEDED



ALL DIMS IN

mm



**Edmund Optics®**

TITLE

101.6mm Clear Aperture 45R/55T, Infrared  
Pellicle Beamsplitter

DWG NO

19284

SHEET  
1 OF 1