

NOTES:

1. SUBSTRATE: BOROFLOAT33

2. COATING

DURABILITY:

PHYSICAL: MIL-C-48497A, SECTION 3.4.1

ENVIRONMENTAL: MIL-STD-810F, SECTION 507.4

PERFORMANCE SPECIFICATIONS @ 0° AOI

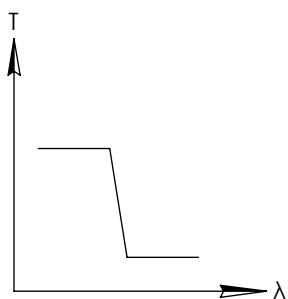
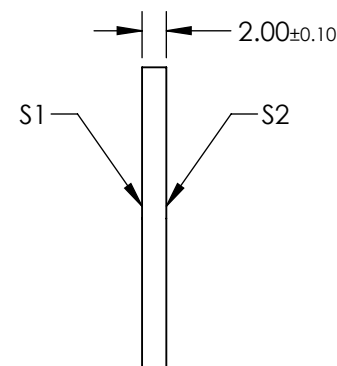
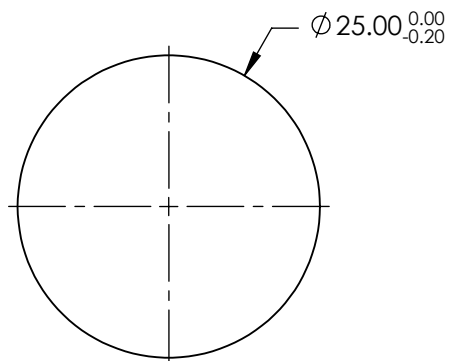
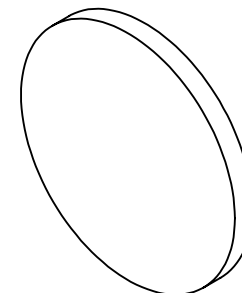
T(AVG): ≥85% from 500 - 900nm

T(AVG): ≤1% from 1025 - 1250nm

CUT-OFF WAVELENGTH: T(ABS) = 50% @ 950nm ± 19nm

3. ROHS COMPLIANT

**FOR INFORMATION ONLY:
DO NOT MANUFACTURE
PARTS TO THIS DRAWING**

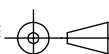


SHORTPASS FILTER

SPECIFICATIONS SUBJECT TO CHANGE WITHOUT NOTICE
DIMENSIONS ARE FOR REFERENCE ONLY

	S1	S2
SHAPE	PLANO	PLANO
SURFACE QUALITY	60-40	60-40
CLEAR APERTURE	Ø22.5	Ø22.5
BEVEL	PROTECTIVE AS NEEDED	PROTECTIVE AS NEEDED

THIRD ANGLE
PROJECTION



ALL DIMS IN

mm

Edmund Optics®

TITLE

FILTER OD2 SHORTPASS 950nm 25mm

DWG NO

15266

SHEET
1 OF 1