

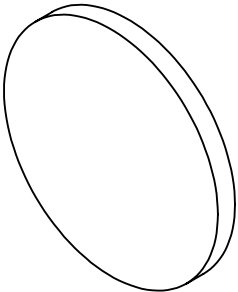
NOTES:

- 1. SUBSTRATE: BOROFLOAT33
- 2. COATING

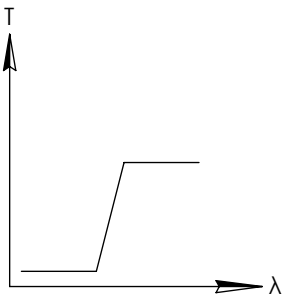
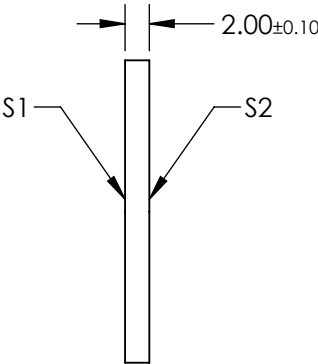
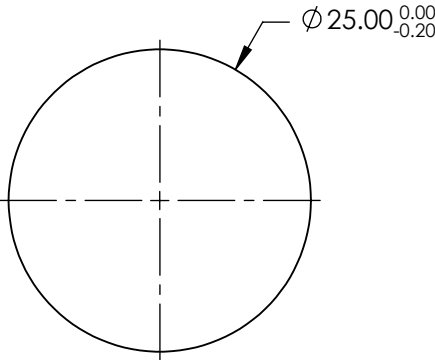
DURABILITY:
PHYSICAL: MIL-C-48497A, SECTION 3.4.1
ENVIRONMENTAL: MIL-STD-810F, SECTION 507.4

PERFORMANCE SPECIFICATIONS @ 0° AOI
T(AVG): ≥85% FROM 990 - 1600nm
T(AVG): ≤1% FROM 700 - 900nm
CUT-ON WAVELENGTH: T(ABS) = 50% @ 950nm ± 19nm

FOR INFORMATION ONLY:
DO NOT MANUFACTURE
PARTS TO THIS DRAWING



- 3. ROHS COMPLIANT



LONGPASS FILTER

SPECIFICATIONS SUBJECT TO CHANGE WITHOUT NOTICE
DIMENSIONS ARE FOR REFERENCE ONLY

	S1	S2
SHAPE	PLANO	PLANO
SURFACE QUALITY	60-40	60-40
CLEAR APERTURE	Ø22.5	Ø22.5
BEVEL	PROTECTIVE AS NEEDED	PROTECTIVE AS NEEDED

THIRD ANGLE PROJECTION

ALL DIMS IN mm

 Edmund Optics®

TITLE	FILTER OD2 LONGPASS 950nm 25mm		
DWG NO	15233		SHEET 1 OF 1