

NOTES:

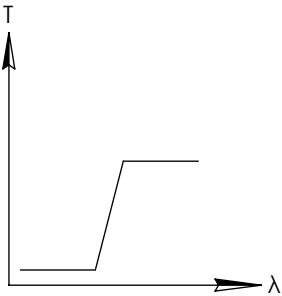
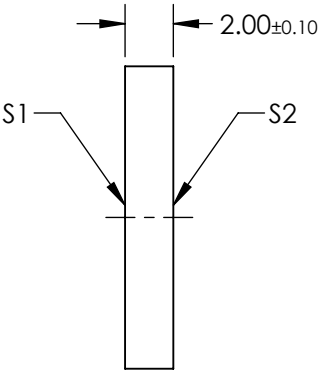
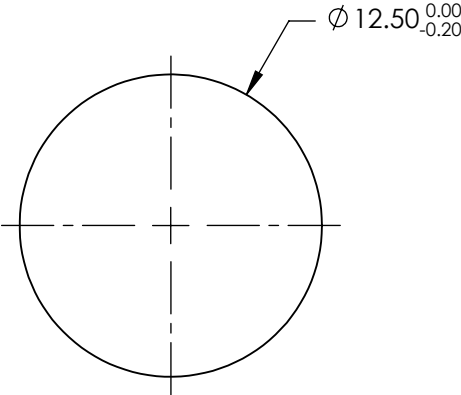
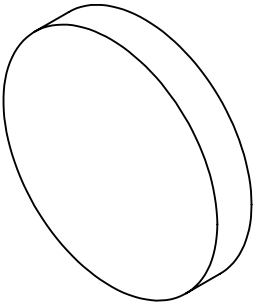
1. SUBSTRATE: BOROFLOAT33  
2. COATING

DURABILITY:  
PHYSICAL: MIL-C-48497A, SECTION 3.4.1  
ENVIRONMENTAL: MIL-STD-810F, SECTION 507.4

PERFORMANCE SPECIFICATIONS @ 0° AOI  
T(AVG): ≥85% FROM 990 - 1600nm  
T(AVG): ≤1% FROM 700 - 900nm  
CUT-ON WAVELENGTH: T(ABS) = 50% @ 950nm ± 19nm

3. ROHS COMPLIANT

**FOR INFORMATION ONLY:  
DO NOT MANUFACTURE  
PARTS TO THIS DRAWING**



LONGPASS FILTER

SPECIFICATIONS SUBJECT TO CHANGE WITHOUT NOTICE  
DIMENSIONS ARE FOR REFERENCE ONLY

	S1	S2
SHAPE	PLANO	PLANO
SURFACE QUALITY	60-40	60-40
CLEAR APERTURE	Ø11.25	Ø11.25
BEVEL	PROTECTIVE AS NEEDED	PROTECTIVE AS NEEDED

**EO**® **Edmund Optics**®



ALL DIMS IN mm

TITLE	FILTER OD2 LONGPASS 950nm 12.5mm		
DWG NO	15221	SHEET 1 OF 1	