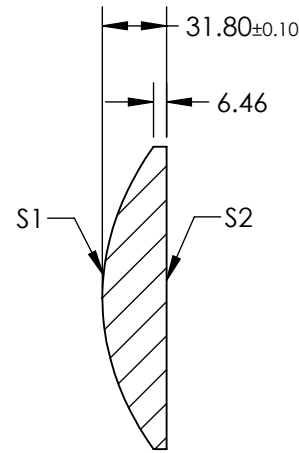
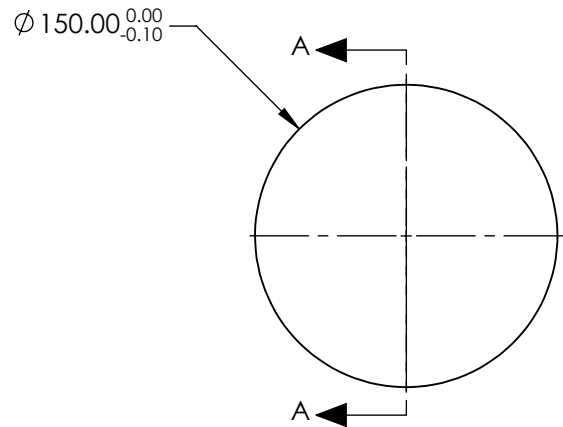


NOTES:

- SUBSTRATE: N-BK7
- COATING (APPLY ACROSS CLEAR APERTURE)
S1: NONE
S2: NONE
- EDGES: FINE GROUND
- CENTERING: ≤5 ARCMIN
- ASPHERE FIGURE ERROR: 0.75 μm RMS

△ ASPHERIC SURFACE DESCRIBED BY (REF. COEFFICIENT TABLE)

$$Z_{ASPH}(Y) = \frac{(1/RADIUS)^2 * Y^2}{1 + \sqrt{1 - (1+k) * (1/RADIUS)^2 * Y^2}} + D * Y^2 + E * Y^4 + F * Y^6 + G * Y^8 + H * Y^{10} + J * Y^{12} + L * Y^{14}$$



SECTION A-A

COEFFICIENT TABLE △ 6.

| COEFFICIENT | S1 |
|---------------|---------------|
| SEMI-DIAMETER | 7.500000E+01 |
| (1/RADIUS) | 8.599931E-03 |
| k | -1.277000E+00 |
| D | 0.000000E+00 |
| E | 5.608000E-08 |
| F | 1.739000E-13 |
| G | 6.233000E-18 |
| H | 0.000000E+00 |
| J | 0.000000E+00 |
| L | 0.000000E+00 |

SPECIFICATIONS SUBJECT TO CHANGE WITHOUT NOTICE DIMENSIONS ARE FOR REFERENCE ONLY

| | | | | | | | |
|-----------------|----------------------|----------------------|--|--------|---|---|--------------|
| | S1 | S2 | EFL @ 587.6nm | 225.00 |  Edmund Optics® | | |
| SHAPE | CONVEX | PLANO | BFL @ 587.6nm | 204.04 | | | |
| RADIUS | 116.280 | INFINITY | THIRD ANGLE PROJECTION  | | TITLE | 150mm DIA., 0.33 NUMERICAL APERTURE UNCOATED, ASPHERIC LENS | |
| SURFACE QUALITY | 60-40 | 60-40 | | | | | |
| CLEAR APERTURE | Ø128 | Ø128 | | | DWG NO | 15018 | SHEET 1 OF 1 |
| BEVEL MAX | PROTECTIVE AS NEEDED | PROTECTIVE AS NEEDED | ALL DIMS IN | mm | | | |

**FOR INFORMATION ONLY:
DO NOT MANUFACTURE
PARTS TO THIS DRAWING**