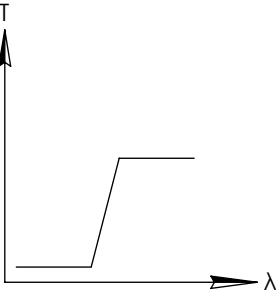
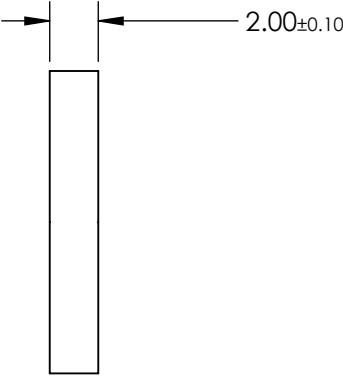
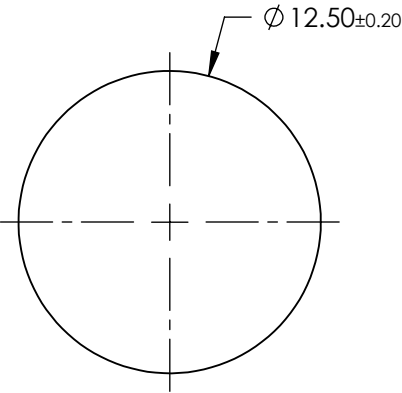
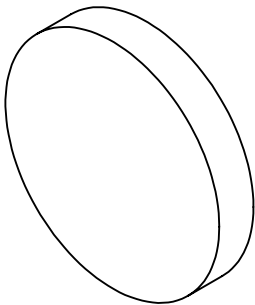


NOTES:

- 1. SUBSTRATE: SCHOTT RG610
- 2. SURFACE S2 TO BE PARALLEL TO SURFACE S1 TO WITHIN 3 ARCMIN

**FOR INFORMATION ONLY:
DO NOT MANUFACTURE
PARTS TO THIS DRAWING**



LONGPASS FILTER

SPECIFICATIONS SUBJECT TO CHANGE WITHOUT NOTICE
DIMENSIONS ARE FOR REFERENCE ONLY

REV. A	VALUE
SHAPE	PLANO
SPECTRAL TRANSMITTANCE $\tau_{ip}(\%)$	94
PASSBAND LIMIT $\lambda_{p1} \text{ (nm)}$	690
CUT-OFF POSITION $\lambda_c \text{ (nm)}$	610±6
STOPBAND LIMIT $\lambda_s \text{ (nm)}$	530
WAVELENGTH	VIS
BEVEL	PROTECTIVE AS NEEDED



ALL DIMS IN

mm

TITLE

SCHOTT RG610, 12.5mm DIA., 2mm THICK,
COLORED GLASS LONGPASS FILTER

DWG NO

16446

SHEET
1 OF 1