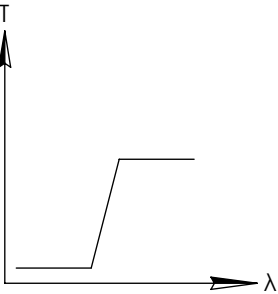
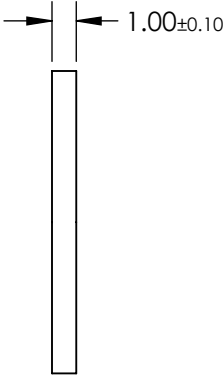
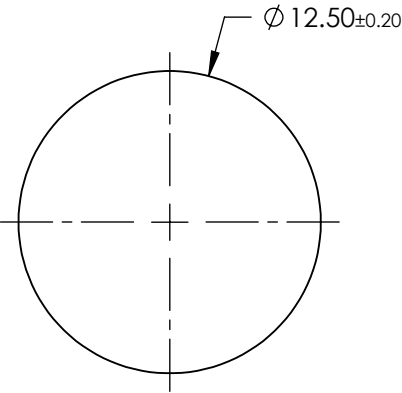
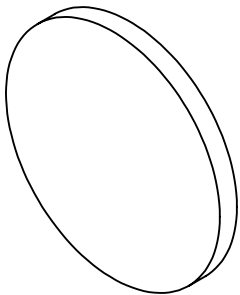


NOTES:

- 1. SUBSTRATE: SCHOTT RG630
- 2. SURFACE S2 TO BE PARALLEL TO SURFACE S1 TO WITHIN 3 ARCMIN

FOR INFORMATION ONLY:  
DO NOT MANUFACTURE  
PARTS TO THIS DRAWING



LONGPASS FILTER

SPECIFICATIONS SUBJECT TO CHANGE WITHOUT NOTICE  
DIMENSIONS ARE FOR REFERENCE ONLY

REV. A	VALUE
SHAPE	PLANO
SPECTRAL TRANSMITTANCE $\tau_p(\%)$	94
PASSBAND LIMIT $\lambda_p$ (nm)	710
CUT-OFF POSITION $\lambda_c$ (nm)	630±6
STOPBAND LIMIT $\lambda_s$ (nm)	540
WAVELENGTH	VIS
BEVEL	PROTECTIVE AS NEEDED



ALL DIMS IN

mm

TITLE

SCHOTT RG630, 12.5mm DIA., 1mm THICK,  
COLORED GLASS LONGPASS FILTER

DWG NO

16420

SHEET  
1 OF 1