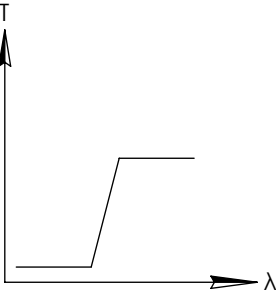
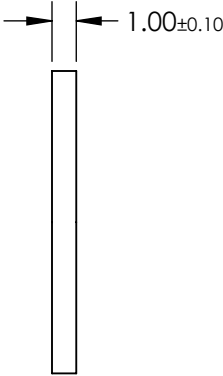
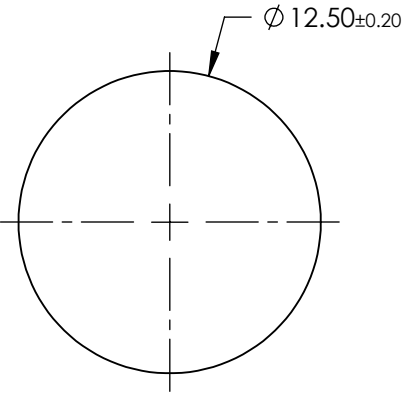
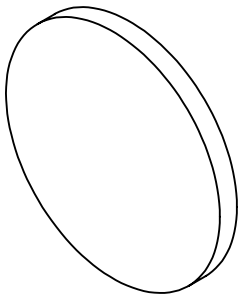


NOTES:

- 1. SUBSTRATE: SCHOTT RG610
- 2. SURFACE S2 TO BE PARALLEL TO SURFACE S1 TO WITHIN 3 ARCMIN

FOR INFORMATION ONLY:
DO NOT MANUFACTURE
PARTS TO THIS DRAWING



LONGPASS FILTER

SPECIFICATIONS SUBJECT TO CHANGE WITHOUT NOTICE
DIMENSIONS ARE FOR REFERENCE ONLY

REV. A	VALUE
SHAPE	PLANO
SPECTRAL TRANSMITTANCE $\tau_p(\%)$	94
PASSBAND LIMIT $\lambda_p(\text{nm})$	690
CUT-OFF POSITION $\lambda_c(\text{nm})$	610±6
STOPBAND LIMIT $\lambda_s(\text{nm})$	530
WAVELENGTH	VIS
BEVEL	PROTECTIVE AS NEEDED



ALL DIMS IN

mm

TITLE

SCHOTT RG610, 12.5mm DIA., 1mm THICK,
COLORED GLASS LONGPASS FILTER

DWG NO

16419

SHEET
1 OF 1