

NOTES:

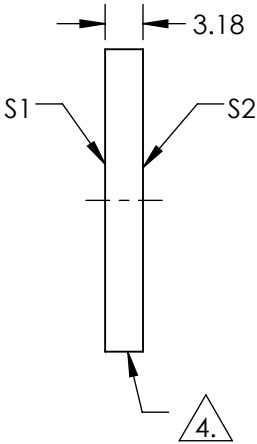
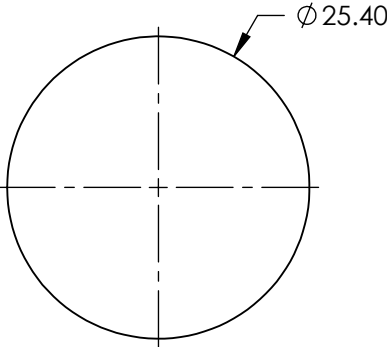
- 1. SUBSTRATE:
SAPPHIRE (AlO3)
- 2. SURFACE S2 TO BE PARALLEL WITH SURFACE S1 TO WITHIN < 3 ARCMIN
- 3. COATING (APPLY ACROSS CLEAR APERTURE)

S1 & S2: R(AVG) <0.3% @ 1000 - 1100nm
R(AVG) <0.1% @ 1020 - 1070nm



FINE GRIND SURFACE

- 5. TRANSMITTED WAVEFRONT DISTORTION:
< λ/10 OVER CLEAR APERTURE
- 6. ROHS COMPLIANT



**FOR INFORMATION ONLY:
DO NOT MANUFACTURE
PARTS TO THIS DRAWING**

SPECIFICATIONS SUBJECT TO CHANGE WITHOUT NOTICE
DIMENSIONS ARE FOR REFERENCE ONLY

	S1	S2
SHAPE	PLANO	PLANO
CLEAR APERTURE	Ø22.00	Ø22.00
SURFACE QUALITY	10-5	10-5
BIREFRINGENCE (n _o -n _e)	0.000	0.000
AXIS ORIENTATION	C-AXIS	C-AXIS
BEVEL	PROTECTIVE AS NEEDED	PROTECTIVE AS NEEDED

THIRD ANGLE
PROJECTION

ALL DIMS INmm

Edmund Optics®

TITLE

Ø25.40mm, 3.18mm THICK, BBAR(1000 - 1100nm) COATED, LASER GRADE C-AXIS SAPPHIRE WINDOW

DWG NO

15807

SHEET
1 OF 1