

NOTES:

- 1. SUBSTRATE:  
SAPPHIRE (AlO3)
- 2. SURFACE S2 TO BE PARALLEL WITH SURFACE S1 TO WITHIN < 3 ARCMIN
- 3. COATING (APPLY ACROSS CLEAR APERTURE)

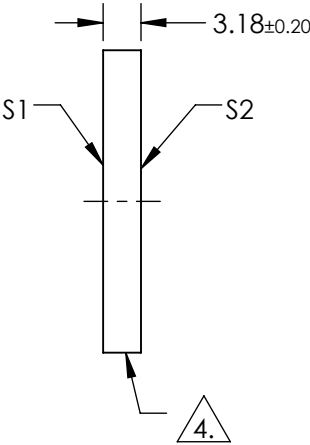
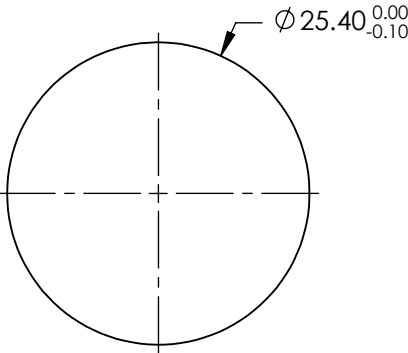
S1 & S2: R(AVG) <0.3% @ 1000 - 1100nm  
R(AVG) <0.1% @ 1020 - 1070nm



FINE GRIND SURFACE

- 5. TRANSMITTED WAVEFRONT DISTORTION:  
< λ/10 OVER CLEAR APERTURE
- 6. ROHS COMPLIANT

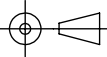
FOR INFORMATION ONLY:  
DO NOT MANUFACTURE  
PARTS TO THIS DRAWING



SPECIFICATIONS SUBJECT TO CHANGE WITHOUT NOTICE  
DIMENSIONS ARE FOR REFERENCE ONLY

	S1	S2
SHAPE	PLANO	PLANO
CLEAR APERTURE	Ø22.00	Ø22.00
SURFACE QUALITY	10-5	10-5
BIREFRINGENCE (n <sub>o</sub> -n <sub>e</sub> )	0.000	0.000
AXIS ORIENTATION	C-AXIS	C-AXIS
BEVEL	PROTECTIVE AS NEEDED	PROTECTIVE AS NEEDED

THIRD ANGLE  
PROJECTION



ALL DIMS IN

mm



Edmund Optics®

TITLE

Ø25.40mm, 3.18mm THICK, BBAR(1000 -  
1100nm) COATED, LASER GRADE C-AXIS  
SAPPHIRE WINDOW

DWG NO

15807

SHEET  
1 OF 1