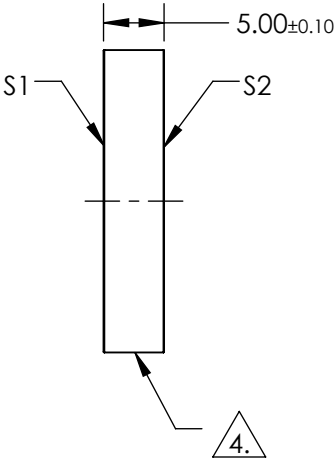
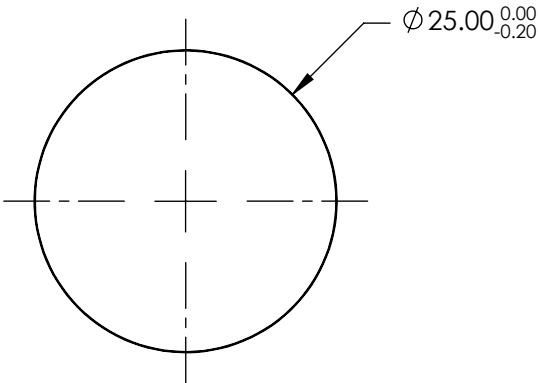

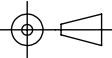


- NOTES:
- 1. SUBSTRATE:  
UV GRADE FUSED SILICA
  - 2. COATING (APPLY ACROSS COATING APERTURE):  
S1 & S2: YAG-BBAR (500-1100nm)  
R(ABS) < 0.25% @ 532nm @ 0° AOI  
R(ABS) < 0.25% @ 1064nm @ 0° AOI  
R(AVG) < 1.0% FROM 500-1100nm @ 0° AOI
  - 3. SURFACE S2 TO BE PARALLEL TO SURFACE S1 TO WITHIN <5 ARCSEC
  - 4. FINE GRIND SURFACE
  - 5. ROHS COMPLIANT



**FOR INFORMATION ONLY:  
DO NOT MANUFACTURE  
PARTS TO THIS DRAWING**

SPECIFICATIONS SUBJECT TO CHANGE WITHOUT NOTICE  
DIMENSIONS ARE FOR REFERENCE ONLY

		S1	S2				 Edmund Optics®	
SHAPE		PLANO	PLANO		TITLE		25mm Dia., 5mm Thick, YAG-BBAR Coated λ/10 Fused Silica Window	
SURFACE QUALITY		20-10	20-10		DWG NO		13356	
CLEAR APERTURE		Ø20.00	Ø20.00					
BEVEL		PROTECTIVE AS NEEDED	PROTECTIVE AS NEEDED		ALL DIMS IN	mm	SHEET 1 OF 1	