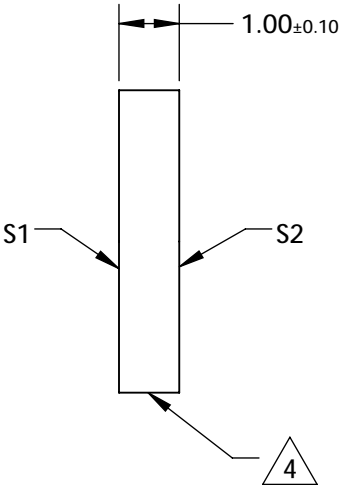
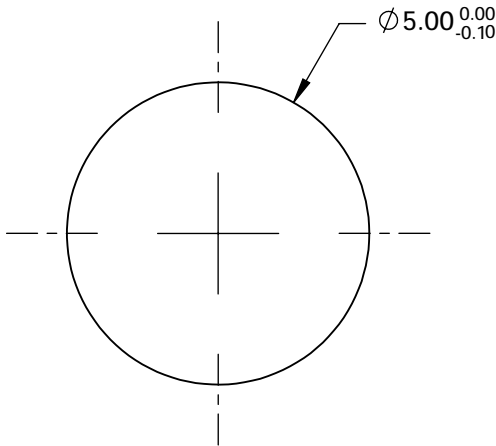
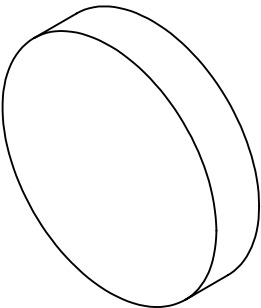


NOTES:

- 1. SUBSTRATE: UV GRADE FUSED SILICA
- 2. COATING (APPLY ACROSS CLEAR APERTURE)
S1 & S2: R(AVG) <0.5% @ 350 - 700nm
- 3. SURFACE S2 TO BE PARALLEL WITH S1 TO WITHIN <5 ARCSEC


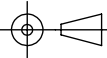
 FINE GRIND SURFACE

- 5. RoHS COMPLIANT



**FOR INFORMATION ONLY:
DO NOT MANUFACTURE
PARTS TO THIS DRAWING**

SPECIFICATIONS SUBJECT TO CHANGE WITHOUT NOTICE
DIMENSIONS ARE FOR REFERENCE ONLY

	S1	S2	 Edmund Optics®			
SHAPE	PLANO	PLANO		TITLE	5mm DIA., 1mm THICK, VIS-EXT COATED, λ/10 FUSED SILICA WINDOW	
SURFACE QUALITY	20-10	20-10				
CLEAR APERTURE	Ø4.00	Ø4.00		DWG NO	13330	SHEET 1 OF 1
BEVEL	PROTECTIVE AS NEEDED	PROTECTIVE AS NEEDED	ALL DIMS IN	mm		