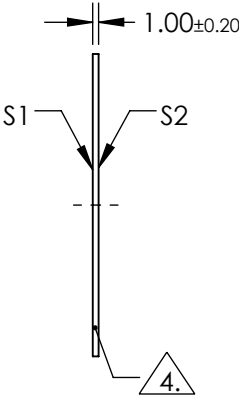
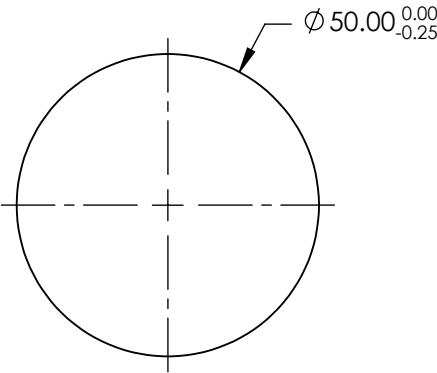
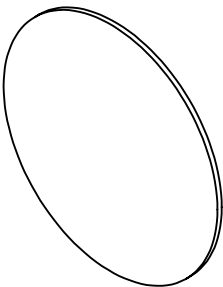


NOTES:

- 1. SUBSTRATE: N-BK7
- 2. S2 TO BE PARALLEL WITH S1 TO < 1 ARCMIN
- 3. COATING (APPLY ACROSS CLEAR APERTURE)
 - S1 & S2: R(ABS) <0.25% @ 532nm
 - R(ABS) <0.25% @ 1064nm
 - R(AVG) <1.0% @ 500 - 1100nm


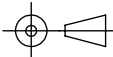
4. FINE GRIND SURFACE

- 5. RoHS COMPLIANT
- 6. TRANSMITTED WAVEFRONT (P-V): $\lambda/4$ (per inch over clear aperture)



**FOR INFORMATION ONLY:
DO NOT MANUFACTURE
PARTS TO THIS DRAWING**

SPECIFICATIONS SUBJECT TO CHANGE WITHOUT NOTICE
DIMENSIONS ARE FOR REFERENCE ONLY

	S1	S2			 Edmund Optics®		
SHAPE	PLANO	PLANO	THIRD ANGLE PROJECTION 	TITLE	50mm DIA., 1mm THICK, YAG-BBAR COATED, λ/4 N-BK7 WINDOW		
SURFACE QUALITY	60-40	60-40		DWG NO	13324		SHEET 1 OF 1
CLEAR APERTURE	Ø45.00	Ø45.00					
BEVEL	PROTECTIVE AS NEEDED	PROTECTIVE AS NEEDED	ALL DIMS IN	mm			