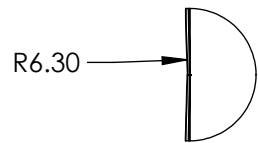
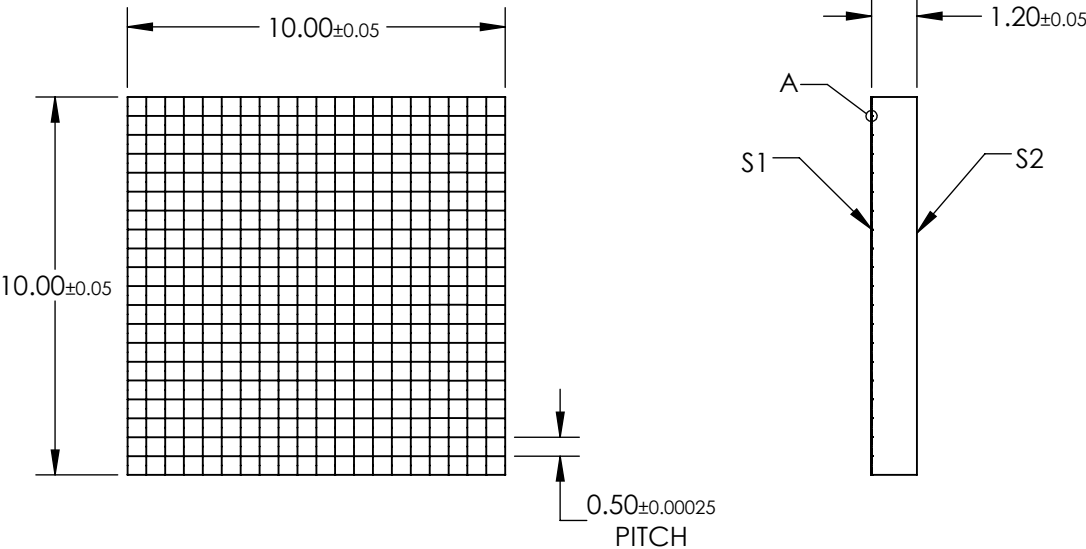


NOTES:

- 1. SUBSTRATE:  
Fused Silica
- 2. COATING (APPLY ACROSS COATING APERTURE):  
S1 & S2: R(ABS) ≤0.25% @ 880nm  
R(AVG) ≤1.25% @ 400 - 870nm  
R(AVG) ≤1.25% @ 890 - 1000nm
- 3. EFFECTIVE FOCAL LENGTH: 13.8mm
- 4. DIVERGENCE ANGLE: ±1.2 °
- 5. WAVELENGTH RANGE (nm): 400 - 1000
- 6. ROHS: COMPLIANT



DETAIL A



SPECIFICATIONS SUBJECT TO CHANGE WITHOUT NOTICE  
DIMENSIONS ARE FOR REFERENCE ONLY

**FOR INFORMATION ONLY:  
DO NOT MANUFACTURE  
PARTS TO THIS DRAWING**

**Edmund Optics®**

THIRD ANGLE PROJECTION		TITLE	Microlens Array 10 x 10mm, 500µm Pitch, 1.2° Divergence, VIS-NIR Coated	
ALL DIMS IN	mm	DWG NO	15813	SHEET 1 OF 1