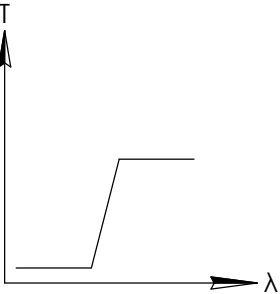
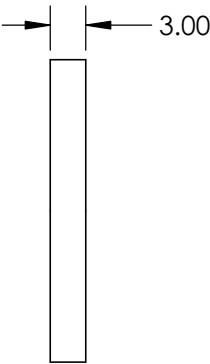
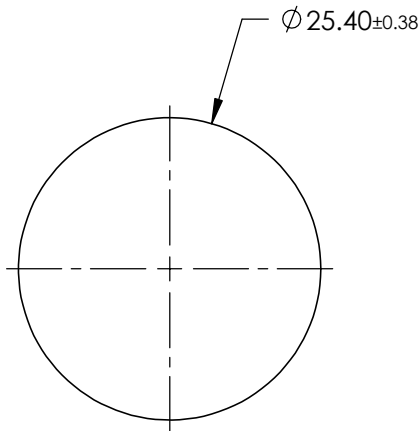
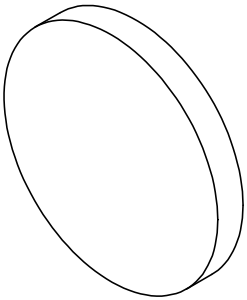


FOR INFORMATION ONLY:
DO NOT MANUFACTURE
PARTS TO THIS DRAWING



LONGPASS FILTER

SPECIFICATIONS SUBJECT TO CHANGE WITHOUT NOTICE
DIMENSIONS ARE FOR REFERENCE ONLY

REV. A	VALUE
SHAPE	PLANO
SPECTRAL TRANSMITTANCE $\tau_{ip}(\%)$	92
PASSBAND LIMIT $\lambda_{pl} \text{ (nm)}$	520
CUT-OFF POSITION $\lambda_c \text{ (nm)}$	435±6
STOPBAND LIMIT $\lambda_s \text{ (nm)}$	370
WAVELENGTH	VIS
BEVEL	PROTECTIVE AS NEEDED

 Edmund Optics®



ALL DIMS IN

mm

TITLE

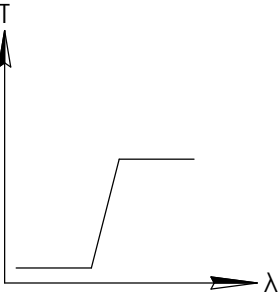
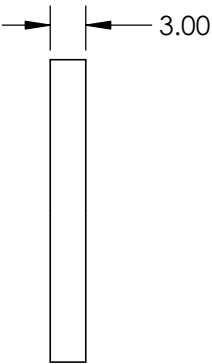
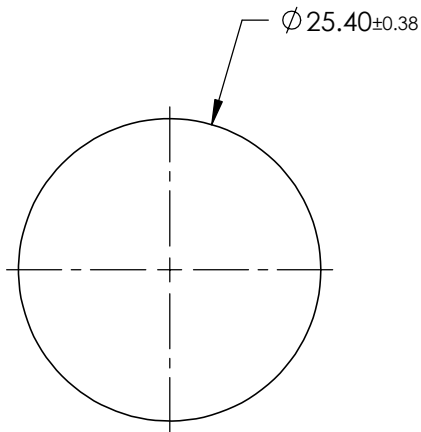
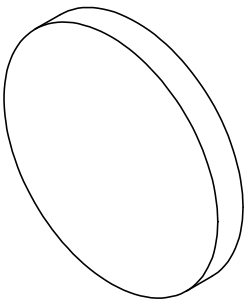
Ø25.4mm, GG-435 LONGPASS FILTER

DWG NO

32752

SHEET
1 OF 1

FOR INFORMATION ONLY:
DO NOT MANUFACTURE
PARTS TO THIS DRAWING



LONGPASS FILTER

SPECIFICATIONS SUBJECT TO CHANGE WITHOUT NOTICE
DIMENSIONS ARE FOR REFERENCE ONLY

REV. A	VALUE
SHAPE	PLANO
SPECTRAL TRANSMITTANCE $\tau_{ip}(\%)$	92
PASSBAND LIMIT $\lambda_{pl} \text{ (nm)}$	560
CUT-OFF POSITION $\lambda_c \text{ (nm)}$	495±6
STOPBAND LIMIT $\lambda_s \text{ (nm)}$	430
WAVELENGTH	VIS
BEVEL	PROTECTIVE AS NEEDED

 Edmund Optics®



ALL DIMS IN

mm

TITLE

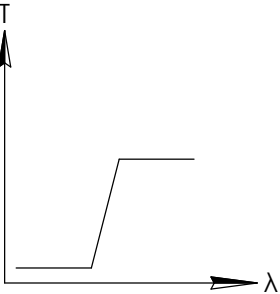
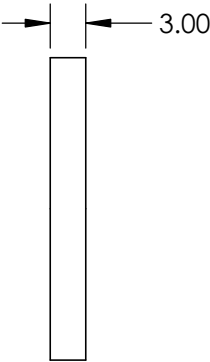
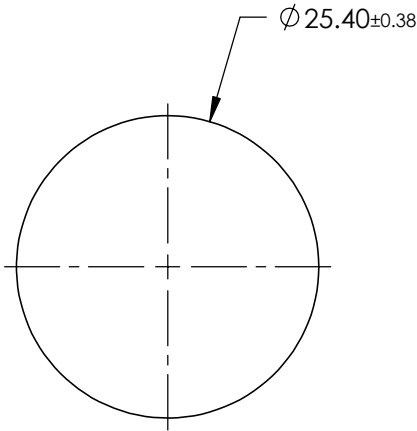
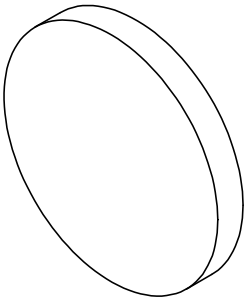
Ø25.4mm, GG-495 LONGPASS FILTER

DWG NO

32753

SHEET
1 OF 1

FOR INFORMATION ONLY:
DO NOT MANUFACTURE
PARTS TO THIS DRAWING



LONGPASS FILTER

SPECIFICATIONS SUBJECT TO CHANGE WITHOUT NOTICE
DIMENSIONS ARE FOR REFERENCE ONLY

REV. A	VALUE
SHAPE	PLANO
SPECTRAL TRANSMITTANCE $\tau_{ip}(\%)$	93
PASSBAND LIMIT $\lambda_{pl} \text{ (nm)}$	620
CUT-OFF POSITION $\lambda_c \text{ (nm)}$	550±6
STOPBAND LIMIT $\lambda_s \text{ (nm)}$	480
WAVELENGTH	VIS
BEVEL	PROTECTIVE AS NEEDED

 Edmund Optics®



ALL DIMS IN

mm

TITLE

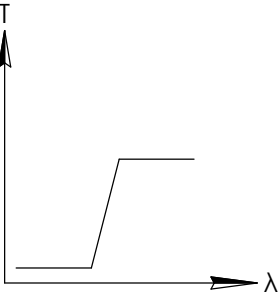
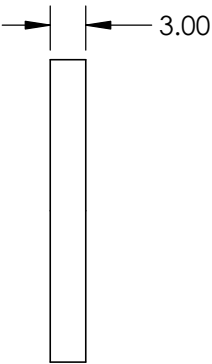
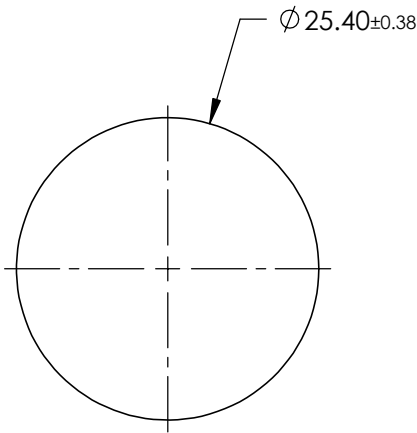
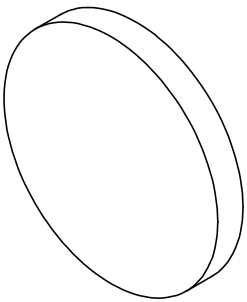
Ø25.4mm, OG-550 LONGPASS FILTER

DWG NO

32754

SHEET
1 OF 1

FOR INFORMATION ONLY:
DO NOT MANUFACTURE
PARTS TO THIS DRAWING



LONGPASS FILTER

SPECIFICATIONS SUBJECT TO CHANGE WITHOUT NOTICE
DIMENSIONS ARE FOR REFERENCE ONLY

REV. A	VALUE
SHAPE	PLANO
SPECTRAL TRANSMITTANCE $\tau_{ip}(\%)$	94
PASSBAND LIMIT $\lambda_{pl} \text{ (nm)}$	710
CUT-OFF POSITION $\lambda_c \text{ (nm)}$	630±6
STOPBAND LIMIT $\lambda_s \text{ (nm)}$	540
WAVELENGTH	VIS
BEVEL	PROTECTIVE AS NEEDED

 **Edmund Optics®**



ALL DIMS IN

mm

TITLE

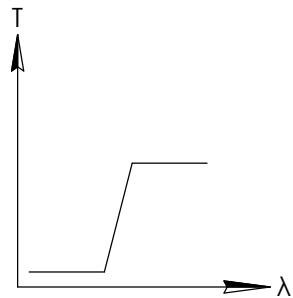
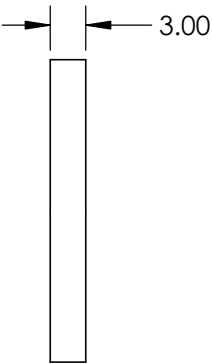
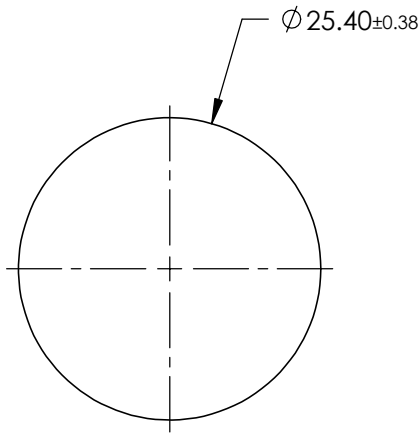
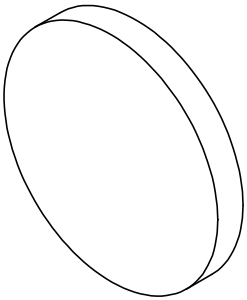
Ø25.4mm, RG-630 LONGPASS FILTER

DWG NO

32755

SHEET
1 OF 1

FOR INFORMATION ONLY:
DO NOT MANUFACTURE
PARTS TO THIS DRAWING



LONGPASS FILTER

SPECIFICATIONS SUBJECT TO CHANGE WITHOUT NOTICE
DIMENSIONS ARE FOR REFERENCE ONLY

REV. A	VALUE
SHAPE	PLANO
SPECTRAL TRANSMITTANCE $\tau_{ip}(\%)$	96
PASSBAND LIMIT $\lambda_{pl} \text{ (nm)}$	780
CUT-OFF POSITION $\lambda_c \text{ (nm)}$	695±6
STOPBAND LIMIT $\lambda_s \text{ (nm)}$	610
WAVELENGTH	IR
BEVEL	PROTECTIVE AS NEEDED

 Edmund Optics®



ALL DIMS IN

mm

TITLE

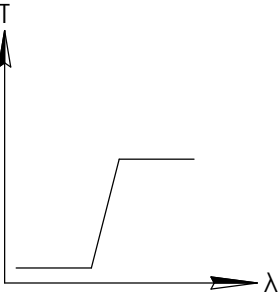
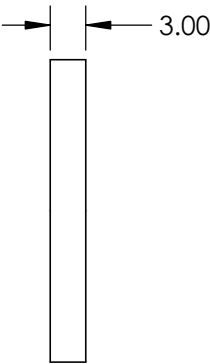
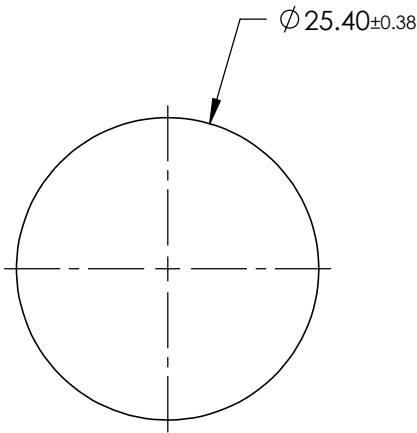
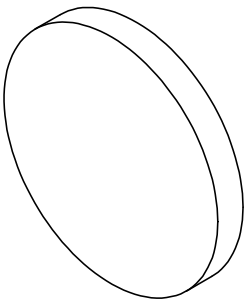
Ø25.4mm, RG-695 LONGPASS FILTER

DWG NO

32756

SHEET
1 OF 1

FOR INFORMATION ONLY:
DO NOT MANUFACTURE
PARTS TO THIS DRAWING



LONGPASS FILTER

SPECIFICATIONS SUBJECT TO CHANGE WITHOUT NOTICE
DIMENSIONS ARE FOR REFERENCE ONLY

REV. A	VALUE
SHAPE	PLANO
SPECTRAL TRANSMITTANCE $\tau_{ip}(\%)$	97
PASSBAND LIMIT $\lambda_{pl} \text{ (nm)}$	900
CUT-OFF POSITION $\lambda_c \text{ (nm)}$	780±9
STOPBAND LIMIT $\lambda_s \text{ (nm)}$	610
WAVELENGTH	IR
BEVEL	PROTECTIVE AS NEEDED

 Edmund Optics®



ALL DIMS IN

mm

TITLE

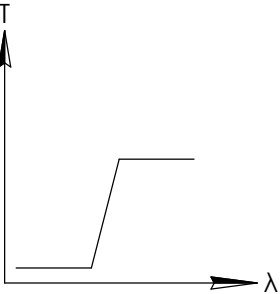
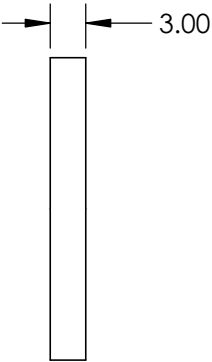
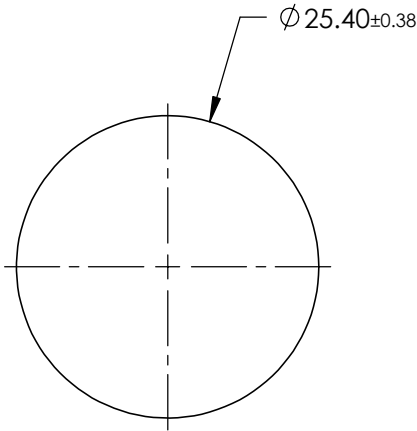
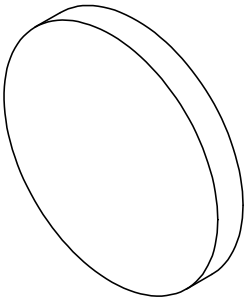
Ø25.4mm, RG-780 LONGPASS FILTER

DWG NO

32757

SHEET
1 OF 1

FOR INFORMATION ONLY:
DO NOT MANUFACTURE
PARTS TO THIS DRAWING



LONGPASS FILTER

SPECIFICATIONS SUBJECT TO CHANGE WITHOUT NOTICE
DIMENSIONS ARE FOR REFERENCE ONLY

REV. A	VALUE
SHAPE	PLANO
SPECTRAL TRANSMITTANCE $\tau_{ip}(\%)$	97
PASSBAND LIMIT $\lambda_{pl} \text{ (nm)}$	950
CUT-OFF POSITION $\lambda_c \text{ (nm)}$	830±9
STOPBAND LIMIT $\lambda_s \text{ (nm)}$	670
WAVELENGTH	IR
BEVEL	PROTECTIVE AS NEEDED

 **Edmund Optics®**



ALL DIMS IN

mm

TITLE

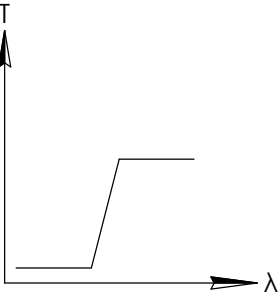
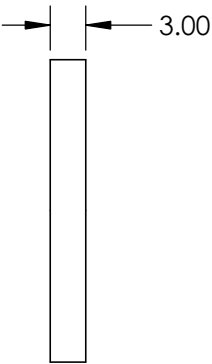
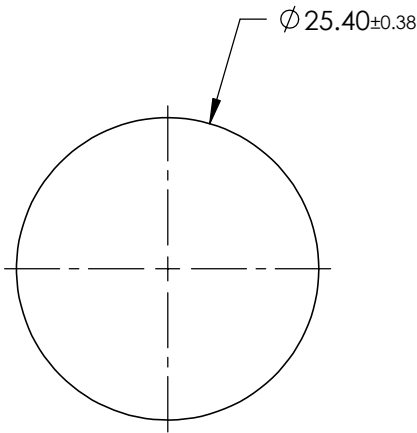
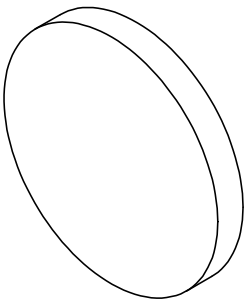
Ø25.4mm, RG-830 LONGPASS FILTER

DWG NO

32758

SHEET
1 OF 1

FOR INFORMATION ONLY:
DO NOT MANUFACTURE
PARTS TO THIS DRAWING



LONGPASS FILTER

SPECIFICATIONS SUBJECT TO CHANGE WITHOUT NOTICE
DIMENSIONS ARE FOR REFERENCE ONLY

REV. A	VALUE
SHAPE	PLANO
SPECTRAL TRANSMITTANCE $\tau_{ip}(\%)$	97
PASSBAND LIMIT $\lambda_{pl} \text{ (nm)}$	120
CUT-OFF POSITION $\lambda_c \text{ (nm)}$	850±9
STOPBAND LIMIT $\lambda_s \text{ (nm)}$	700
WAVELENGTH	IR
BEVEL	PROTECTIVE AS NEEDED

 **Edmund Optics®**



ALL DIMS IN

mm

TITLE

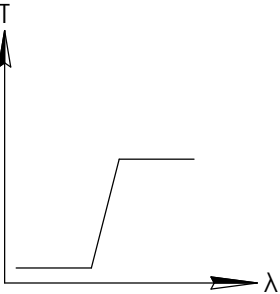
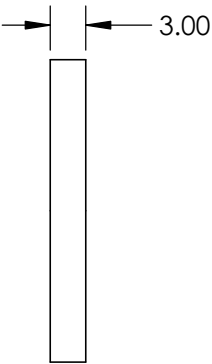
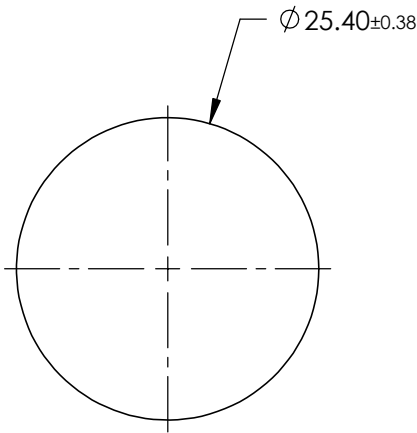
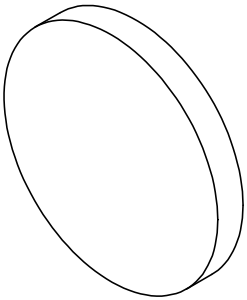
Ø25.4mm, RG-850 LONGPASS FILTER

DWG NO

32759

SHEET
1 OF 1

FOR INFORMATION ONLY:
DO NOT MANUFACTURE
PARTS TO THIS DRAWING



LONGPASS FILTER

SPECIFICATIONS SUBJECT TO CHANGE WITHOUT NOTICE
DIMENSIONS ARE FOR REFERENCE ONLY

REV. A	VALUE
SHAPE	PLANO
SPECTRAL TRANSMITTANCE $\tau_{ip}(\%)$	90
PASSBAND LIMIT $\lambda_{pl} \text{ (nm)}$	1300
CUT-OFF POSITION $\lambda_c \text{ (nm)}$	1000±6
STOPBAND LIMIT $\lambda_s \text{ (nm)}$	730
WAVELENGTH	IR
BEVEL	PROTECTIVE AS NEEDED

 Edmund Optics®



ALL DIMS IN

mm

TITLE

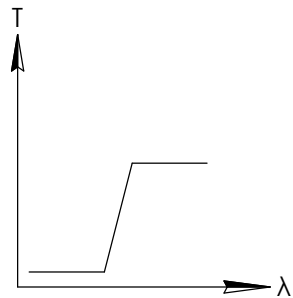
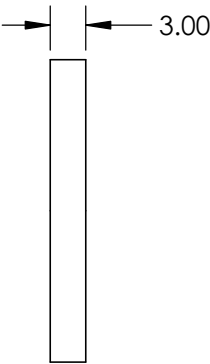
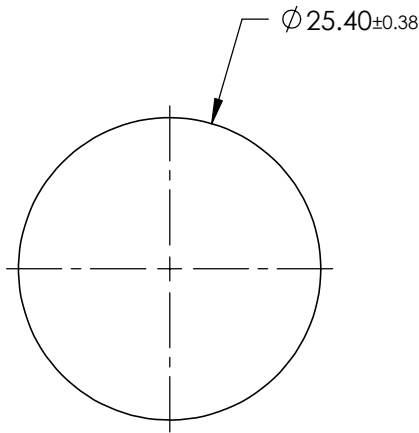
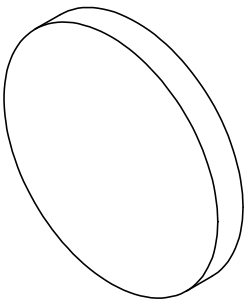
Ø25.4mm, RG-1000 LONGPASS FILTER

DWG NO

32760

SHEET
1 OF 1

FOR INFORMATION ONLY:
DO NOT MANUFACTURE
PARTS TO THIS DRAWING



LONGPASS FILTER

SPECIFICATIONS SUBJECT TO CHANGE WITHOUT NOTICE
DIMENSIONS ARE FOR REFERENCE ONLY

REV. A	VALUE
SHAPE	PLANO
SPECTRAL TRANSMITTANCE $\tau_{ip}(\%)$	99
PASSBAND LIMIT $\lambda_{pl} \text{ (nm)}$	420
CUT-OFF POSITION $\lambda_c \text{ (nm)}$	309±6
STOPBAND LIMIT $\lambda_s \text{ (nm)}$	260
WAVELENGTH	UV
BEVEL	PROTECTIVE AS NEEDED

 **Edmund Optics®**



ALL DIMS IN

mm

TITLE

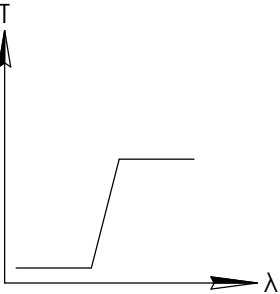
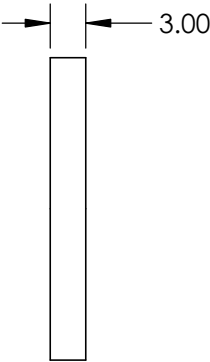
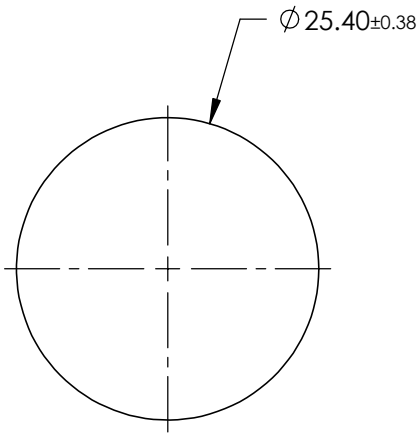
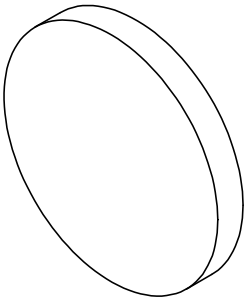
Ø25.4mm, N-WG-305 LONGPASS FILTER

DWG NO

45066

SHEET
1 OF 1

FOR INFORMATION ONLY:
DO NOT MANUFACTURE
PARTS TO THIS DRAWING



LONGPASS FILTER

SPECIFICATIONS SUBJECT TO CHANGE WITHOUT NOTICE
DIMENSIONS ARE FOR REFERENCE ONLY

REV. A	VALUE
SHAPE	PLANO
SPECTRAL TRANSMITTANCE $\tau_{ip}(\%)$	92
PASSBAND LIMIT $\lambda_{pl} \text{ (nm)}$	530
CUT-OFF POSITION $\lambda_c \text{ (nm)}$	455±6
STOPBAND LIMIT $\lambda_s \text{ (nm)}$	390
WAVELENGTH	VIS
BEVEL	PROTECTIVE AS NEEDED

 Edmund Optics®



ALL DIMS IN

mm

TITLE

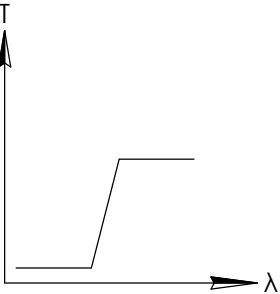
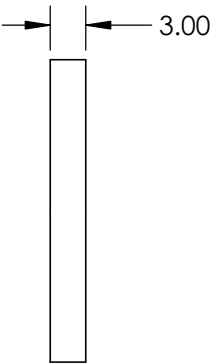
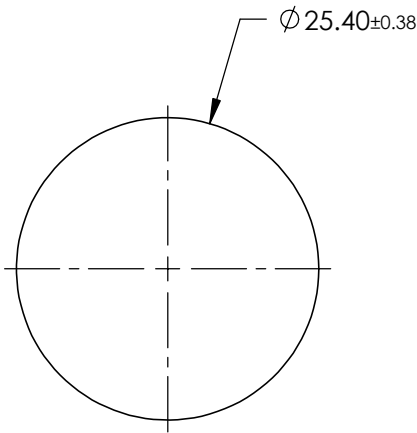
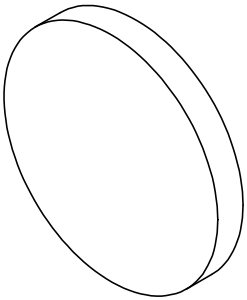
Ø25.4mm, GG-455 LONGPASS FILTER

DWG NO

45068

SHEET
1 OF 1

FOR INFORMATION ONLY:
DO NOT MANUFACTURE
PARTS TO THIS DRAWING



LONGPASS FILTER

SPECIFICATIONS SUBJECT TO CHANGE WITHOUT NOTICE
DIMENSIONS ARE FOR REFERENCE ONLY

REV. A	VALUE
SHAPE	PLANO
SPECTRAL TRANSMITTANCE $\tau_{ip}(\%)$	93
PASSBAND LIMIT $\lambda_{pl} \text{ (nm)}$	580
CUT-OFF POSITION $\lambda_c \text{ (nm)}$	515±6
STOPBAND LIMIT $\lambda_s \text{ (nm)}$	440
WAVELENGTH	VIS
BEVEL	PROTECTIVE AS NEEDED

 Edmund Optics®



THIRD ANGLE
PROJECTION

TITLE

Ø25.4mm, OG-515 LONGPASS FILTER

ALL DIMS IN

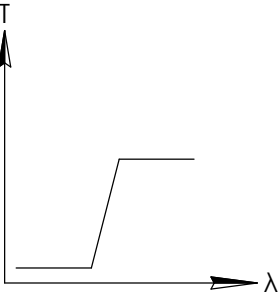
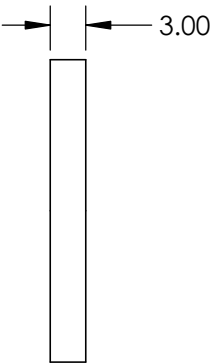
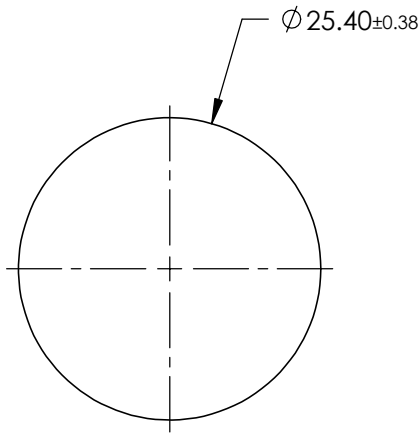
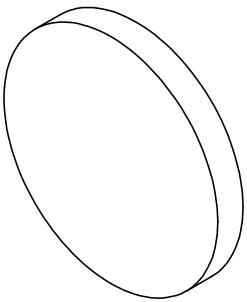
mm

DWG NO

45069

SHEET
1 OF 1

FOR INFORMATION ONLY:
DO NOT MANUFACTURE
PARTS TO THIS DRAWING



LONGPASS FILTER

SPECIFICATIONS SUBJECT TO CHANGE WITHOUT NOTICE
DIMENSIONS ARE FOR REFERENCE ONLY

REV. A	VALUE
SHAPE	PLANO
SPECTRAL TRANSMITTANCE $\tau_{ip}(\%)$	96
PASSBAND LIMIT $\lambda_{pl} \text{ (nm)}$	750
CUT-OFF POSITION $\lambda_c \text{ (nm)}$	665±6
STOPBAND LIMIT $\lambda_s \text{ (nm)}$	580
WAVELENGTH	VIS
BEVEL	PROTECTIVE AS NEEDED

 Edmund Optics®



ALL DIMS IN

mm

TITLE

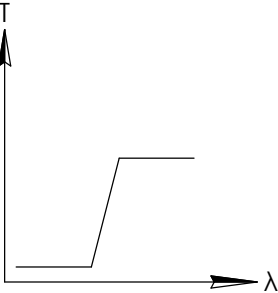
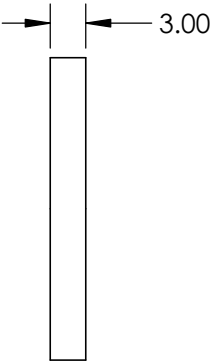
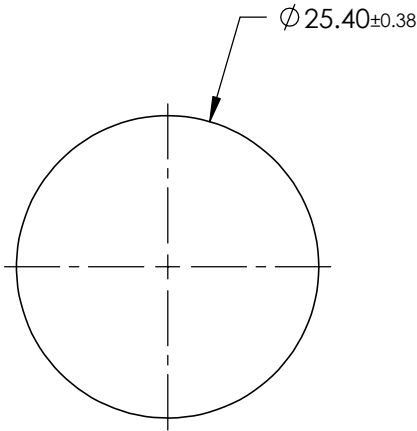
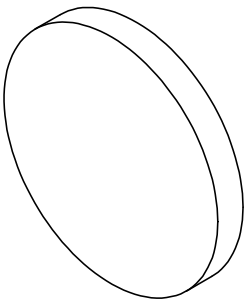
Ø25.4mm, RG-665 LONGPASS FILTER

DWG NO

45070

SHEET
1 OF 1

**FOR INFORMATION ONLY:
DO NOT MANUFACTURE
PARTS TO THIS DRAWING**



LONGPASS FILTER

SPECIFICATIONS SUBJECT TO CHANGE WITHOUT NOTICE
DIMENSIONS ARE FOR REFERENCE ONLY

REV. A	VALUE
SHAPE	PLANO
SPECTRAL TRANSMITTANCE $\tau_{ip}(\%)$	92
PASSBAND LIMIT $\lambda_{pl} \text{ (nm)}$	480
CUT-OFF POSITION $\lambda_c \text{ (nm)}$	395±6
STOPBAND LIMIT $\lambda_s \text{ (nm)}$	340
WAVELENGTH	UV
BEVEL	PROTECTIVE AS NEEDED

EO® **Edmund Optics®**



ALL DIMS IN

mm

TITLE

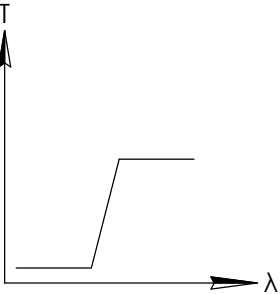
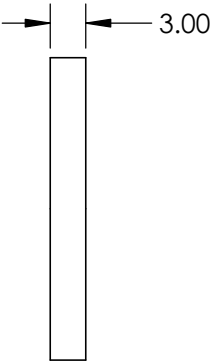
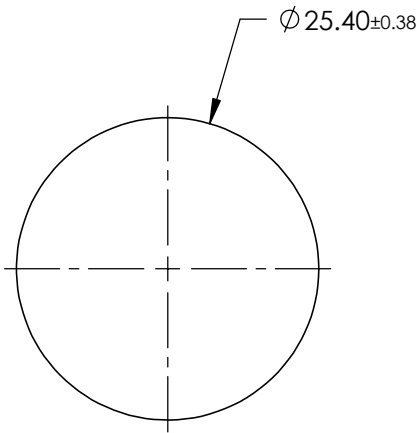
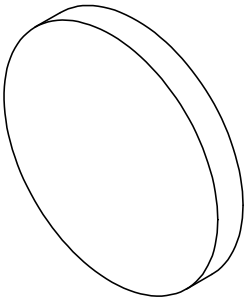
Ø25.4mm, GG-395 LONGPASS FILTER

DWG NO

46055

SHEET
1 OF 1

FOR INFORMATION ONLY:
DO NOT MANUFACTURE
PARTS TO THIS DRAWING



LONGPASS FILTER

SPECIFICATIONS SUBJECT TO CHANGE WITHOUT NOTICE
DIMENSIONS ARE FOR REFERENCE ONLY

REV. A	VALUE
SHAPE	PLANO
SPECTRAL TRANSMITTANCE $\tau_{ip}(\%)$	92
PASSBAND LIMIT $\lambda_{pl} \text{ (nm)}$	550
CUT-OFF POSITION $\lambda_c \text{ (nm)}$	475±6
STOPBAND LIMIT $\lambda_s \text{ (nm)}$	410
WAVELENGTH	VIS
BEVEL	PROTECTIVE AS NEEDED

 Edmund Optics®



ALL DIMS IN

mm

TITLE

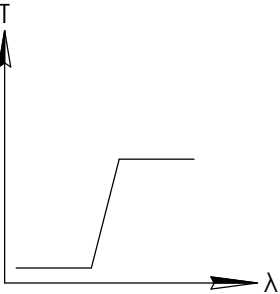
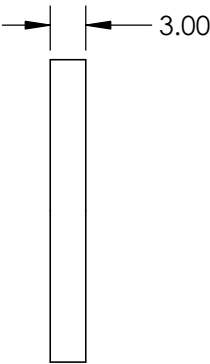
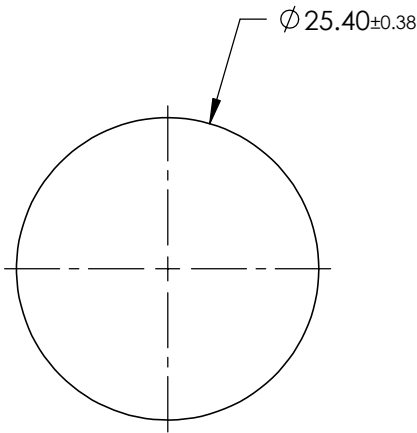
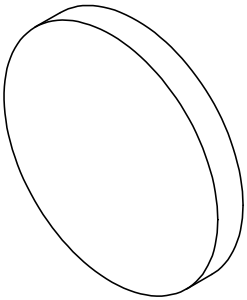
Ø25.4mm, GG-475 LONGPASS FILTER

DWG NO

46057

SHEET
1 OF 1

FOR INFORMATION ONLY:
DO NOT MANUFACTURE
PARTS TO THIS DRAWING



LONGPASS FILTER

SPECIFICATIONS SUBJECT TO CHANGE WITHOUT NOTICE
DIMENSIONS ARE FOR REFERENCE ONLY

REV. A	VALUE
SHAPE	PLANO
SPECTRAL TRANSMITTANCE $\tau_{ip}(\%)$	93
PASSBAND LIMIT $\lambda_{pl} \text{ (nm)}$	600
CUT-OFF POSITION $\lambda_c \text{ (nm)}$	530±6
STOPBAND LIMIT $\lambda_s \text{ (nm)}$	460
WAVELENGTH	VIS
BEVEL	PROTECTIVE AS NEEDED



ALL DIMS IN

mm

TITLE

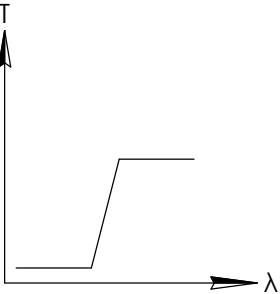
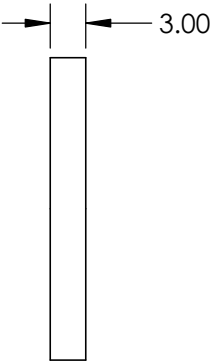
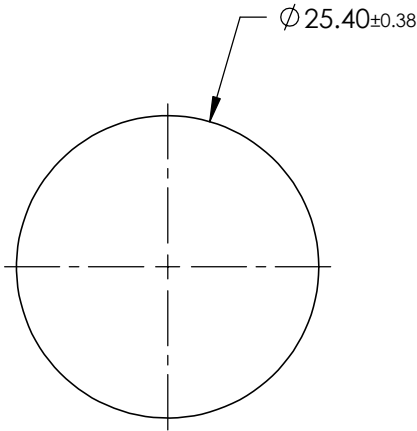
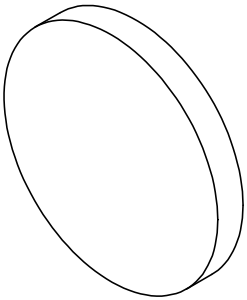
Ø25.4mm, OG-530 LONGPASS FILTER

DWG NO

46059

SHEET
1 OF 1

FOR INFORMATION ONLY:
DO NOT MANUFACTURE
PARTS TO THIS DRAWING



LONGPASS FILTER

SPECIFICATIONS SUBJECT TO CHANGE WITHOUT NOTICE
DIMENSIONS ARE FOR REFERENCE ONLY

REV. A	VALUE
SHAPE	PLANO
SPECTRAL TRANSMITTANCE $\tau_{ip}(\%)$	93
PASSBAND LIMIT $\lambda_{pl} \text{ (nm)}$	640
CUT-OFF POSITION $\lambda_c \text{ (nm)}$	570±6
STOPBAND LIMIT $\lambda_s \text{ (nm)}$	500
WAVELENGTH	VIS
BEVEL	PROTECTIVE AS NEEDED

 Edmund Optics®



ALL DIMS IN

mm

TITLE

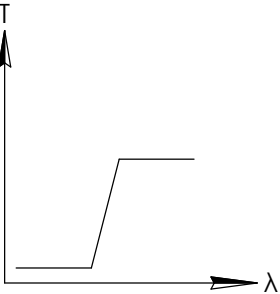
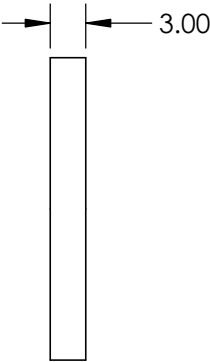
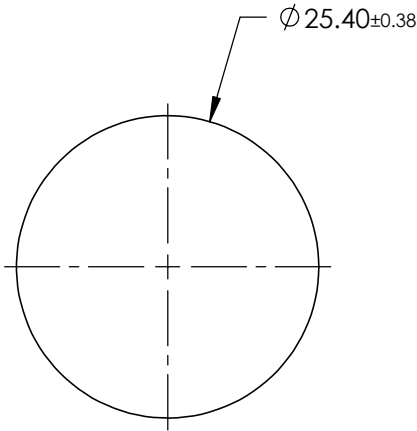
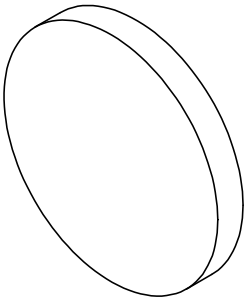
Ø25.4mm, OG-570 LONGPASS FILTER

DWG NO

46061

SHEET
1 OF 1

FOR INFORMATION ONLY:
DO NOT MANUFACTURE
PARTS TO THIS DRAWING



LONGPASS FILTER

SPECIFICATIONS SUBJECT TO CHANGE WITHOUT NOTICE
DIMENSIONS ARE FOR REFERENCE ONLY

REV. A	VALUE
SHAPE	PLANO
SPECTRAL TRANSMITTANCE $\tau_{ip}(\%)$	93
PASSBAND LIMIT $\lambda_{pl} \text{ (nm)}$	660
CUT-OFF POSITION $\lambda_c \text{ (nm)}$	590±6
STOPBAND LIMIT $\lambda_s \text{ (nm)}$	510
WAVELENGTH	VIS
BEVEL	PROTECTIVE AS NEEDED

 Edmund Optics®



THIRD ANGLE
PROJECTION

TITLE

Ø25.4mm, OG-590 LONGPASS FILTER

ALL DIMS IN

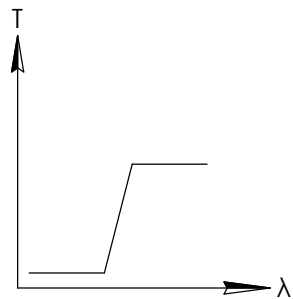
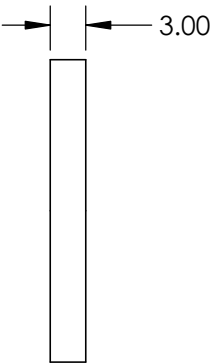
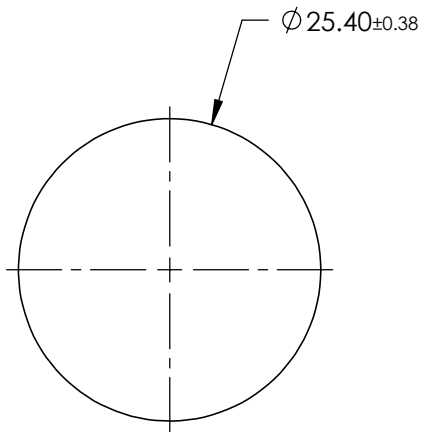
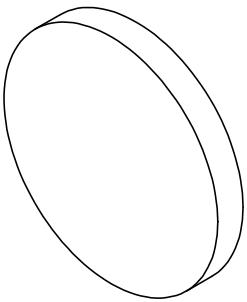
mm

DWG NO

46063

SHEET
1 OF 1

FOR INFORMATION ONLY:
DO NOT MANUFACTURE
PARTS TO THIS DRAWING



LONGPASS FILTER

SPECIFICATIONS SUBJECT TO CHANGE WITHOUT NOTICE
DIMENSIONS ARE FOR REFERENCE ONLY

REV. A	VALUE
SHAPE	PLANO
SPECTRAL TRANSMITTANCE $\tau_{ip}(\%)$	96
PASSBAND LIMIT $\lambda_{pl} \text{ (nm)}$	810
CUT-OFF POSITION $\lambda_c \text{ (nm)}$	715±9
STOPBAND LIMIT $\lambda_s \text{ (nm)}$	620
WAVELENGTH	IR
BEVEL	PROTECTIVE AS NEEDED

 **Edmund Optics®**



ALL DIMS IN

mm

TITLE

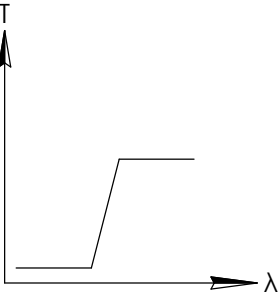
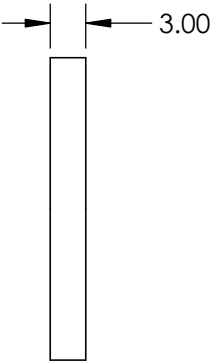
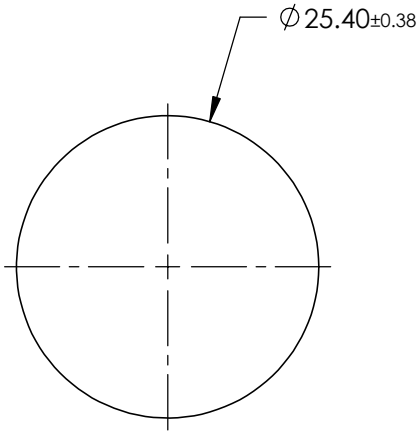
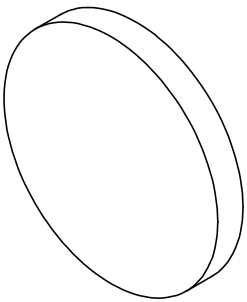
Ø25.4mm, RG-715 LONGPASS FILTER

DWG NO

46065

SHEET
1 OF 1

FOR INFORMATION ONLY:
DO NOT MANUFACTURE
PARTS TO THIS DRAWING



LONGPASS FILTER

SPECIFICATIONS SUBJECT TO CHANGE WITHOUT NOTICE
DIMENSIONS ARE FOR REFERENCE ONLY

REV. A	VALUE
SHAPE	PLANO
SPECTRAL TRANSMITTANCE $\tau_{ip}(\%)$	99
PASSBAND LIMIT $\lambda_{pl} \text{ (nm)}$	400
CUT-OFF POSITION $\lambda_c \text{ (nm)}$	300±6
STOPBAND LIMIT $\lambda_s \text{ (nm)}$	250
WAVELENGTH	UV
BEVEL	PROTECTIVE AS NEEDED

 Edmund Optics®



ALL DIMS IN

mm

TITLE

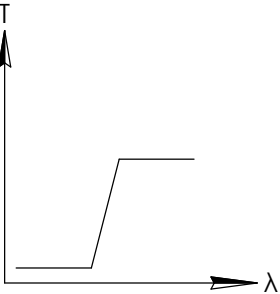
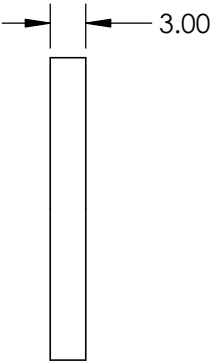
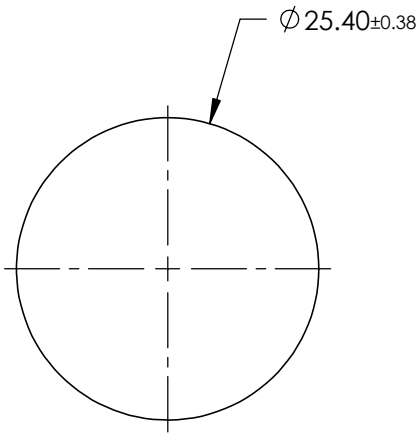
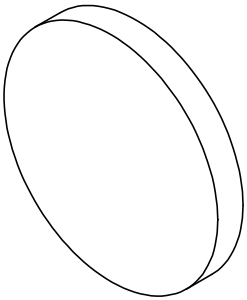
Ø25.4mm, N-WG-295 LONGPASS FILTER

DWG NO

46417

SHEET
1 OF 1

FOR INFORMATION ONLY:
DO NOT MANUFACTURE
PARTS TO THIS DRAWING



LONGPASS FILTER

SPECIFICATIONS SUBJECT TO CHANGE WITHOUT NOTICE
DIMENSIONS ARE FOR REFERENCE ONLY

REV. A	VALUE
SHAPE	PLANO
SPECTRAL TRANSMITTANCE $\tau_{ip}(\%)$	99
PASSBAND LIMIT $\lambda_{pl} \text{ (nm)}$	470
CUT-OFF POSITION $\lambda_c \text{ (nm)}$	320±6
STOPBAND LIMIT $\lambda_s \text{ (nm)}$	280
WAVELENGTH	UV
BEVEL	PROTECTIVE AS NEEDED



ALL DIMS IN

mm

TITLE

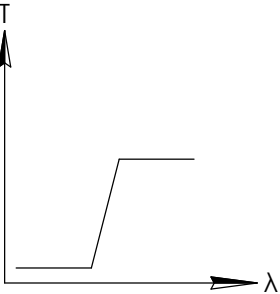
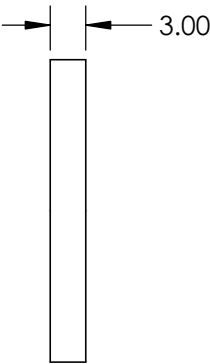
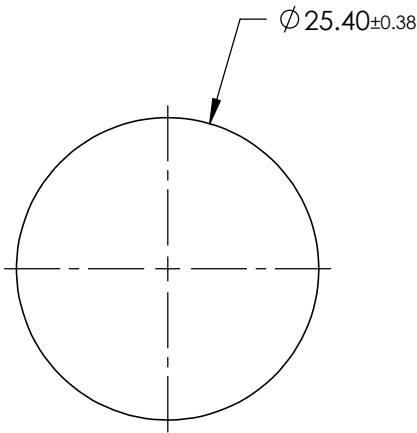
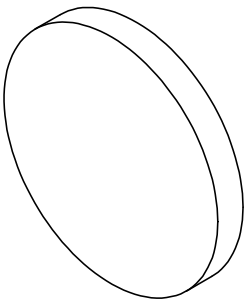
Ø25.4mm, N-WG-320 LONGPASS FILTER

DWG NO

46420

SHEET
1 OF 1

FOR INFORMATION ONLY:
DO NOT MANUFACTURE
PARTS TO THIS DRAWING



LONGPASS FILTER

SPECIFICATIONS SUBJECT TO CHANGE WITHOUT NOTICE
DIMENSIONS ARE FOR REFERENCE ONLY

REV. A	VALUE
SHAPE	PLANO
SPECTRAL TRANSMITTANCE $\tau_{ip}(\%)$	93
PASSBAND LIMIT $\lambda_{pl} \text{ (nm)}$	480
CUT-OFF POSITION $\lambda_c \text{ (nm)}$	400±6
STOPBAND LIMIT $\lambda_s \text{ (nm)}$	340
WAVELENGTH	VIS
BEVEL	PROTECTIVE AS NEEDED

 Edmund Optics®



ALL DIMS IN

mm

TITLE

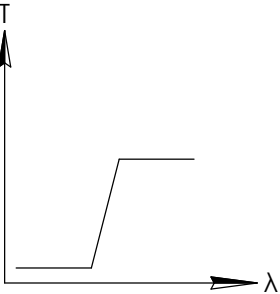
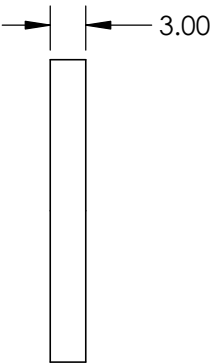
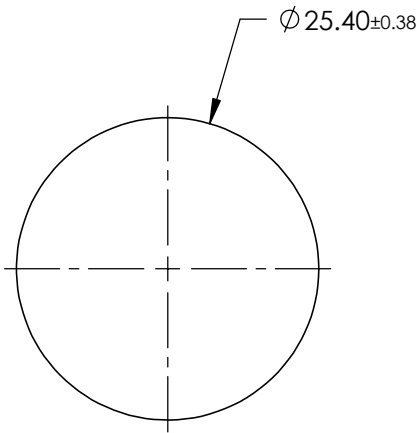
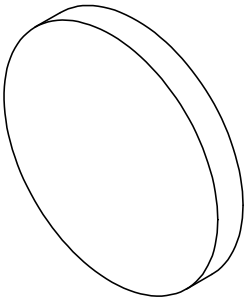
Ø25.4mm, GG-400 LONGPASS FILTER

DWG NO

46423

SHEET
1 OF 1

FOR INFORMATION ONLY:
DO NOT MANUFACTURE
PARTS TO THIS DRAWING



LONGPASS FILTER

SPECIFICATIONS SUBJECT TO CHANGE WITHOUT NOTICE
DIMENSIONS ARE FOR REFERENCE ONLY

REV. A	VALUE
SHAPE	PLANO
SPECTRAL TRANSMITTANCE $\tau_{ip}(\%)$	93
PASSBAND LIMIT $\lambda_{pl} \text{ (nm)}$	530
CUT-OFF POSITION $\lambda_c \text{ (nm)}$	420±6
STOPBAND LIMIT $\lambda_s \text{ (nm)}$	360
WAVELENGTH	VIS
BEVEL	PROTECTIVE AS NEEDED

 Edmund Optics®



ALL DIMS IN

mm

TITLE

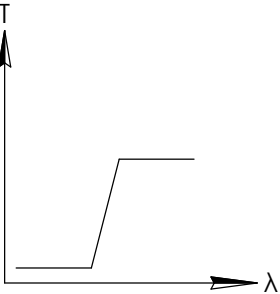
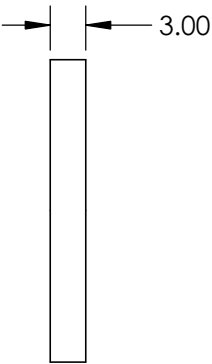
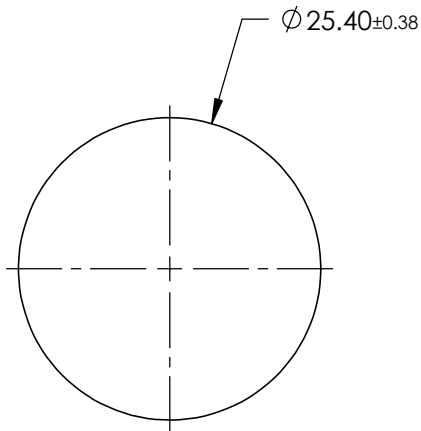
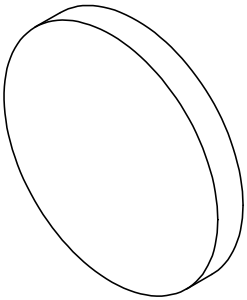
Ø25.4mm, GG-420 LONGPASS FILTER

DWG NO

46426

SHEET
1 OF 1

FOR INFORMATION ONLY:
DO NOT MANUFACTURE
PARTS TO THIS DRAWING



LONGPASS FILTER

SPECIFICATIONS SUBJECT TO CHANGE WITHOUT NOTICE
DIMENSIONS ARE FOR REFERENCE ONLY

REV. A	VALUE
SHAPE	PLANO
SPECTRAL TRANSMITTANCE $\tau_{ip}(\%)$	94
PASSBAND LIMIT $\lambda_{pl} \text{ (nm)}$	690
CUT-OFF POSITION $\lambda_c \text{ (nm)}$	610±6
STOPBAND LIMIT $\lambda_s \text{ (nm)}$	530
WAVELENGTH	VIS
BEVEL	PROTECTIVE AS NEEDED

 **Edmund Optics®**



ALL DIMS IN

mm

TITLE

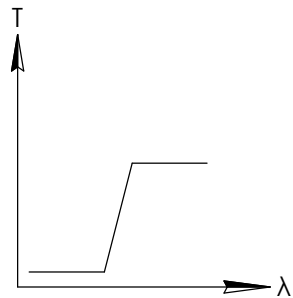
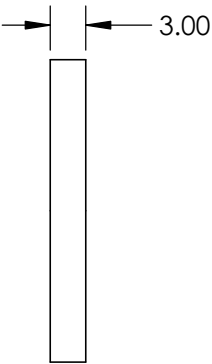
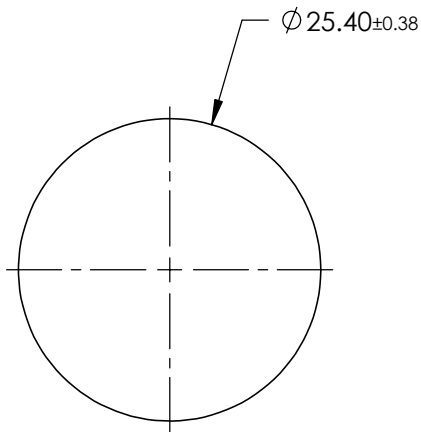
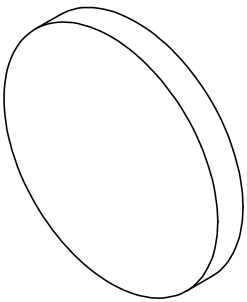
Ø25.4mm, RG-610 LONGPASS FILTER

DWG NO

46429

SHEET
1 OF 1

FOR INFORMATION ONLY:
DO NOT MANUFACTURE
PARTS TO THIS DRAWING



LONGPASS FILTER

SPECIFICATIONS SUBJECT TO CHANGE WITHOUT NOTICE
DIMENSIONS ARE FOR REFERENCE ONLY

REV. A	VALUE
SHAPE	PLANO
SPECTRAL TRANSMITTANCE $\tau_{ip}(\%)$	99
PASSBAND LIMIT $\lambda_{pl} \text{ (nm)}$	380
CUT-OFF POSITION $\lambda_c \text{ (nm)}$	285±6
STOPBAND LIMIT $\lambda_s \text{ (nm)}$	230
WAVELENGTH	UV
BEVEL	PROTECTIVE AS NEEDED

 Edmund Optics®



ALL DIMS IN

mm

TITLE

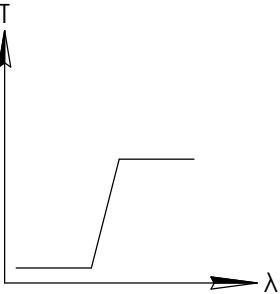
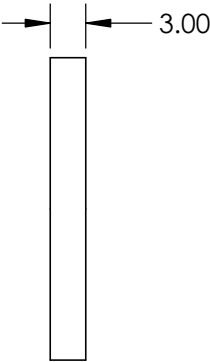
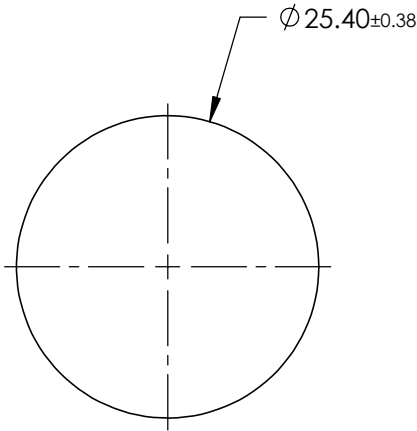
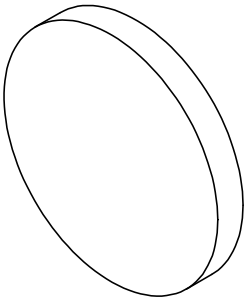
Ø25.4mm, N-WG-280 LONGPASS FILTER

DWG NO

64510

SHEET
1 OF 1

FOR INFORMATION ONLY:
DO NOT MANUFACTURE
PARTS TO THIS DRAWING



LONGPASS FILTER

SPECIFICATIONS SUBJECT TO CHANGE WITHOUT NOTICE
DIMENSIONS ARE FOR REFERENCE ONLY

REV. A	VALUE
SHAPE	PLANO
SPECTRAL TRANSMITTANCE $\tau_{ip}(\%)$	94
PASSBAND LIMIT $\lambda_{pl} \text{ (nm)}$	720
CUT-OFF POSITION $\lambda_c \text{ (nm)}$	645±7
STOPBAND LIMIT $\lambda_s \text{ (nm)}$	560
WAVELENGTH	VIS
BEVEL	PROTECTIVE AS NEEDED

 Edmund Optics®



ALL DIMS IN

mm

TITLE

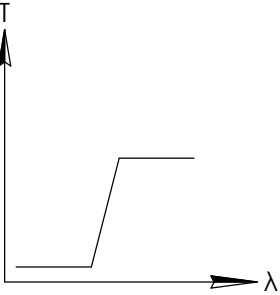
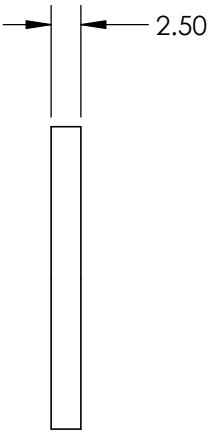
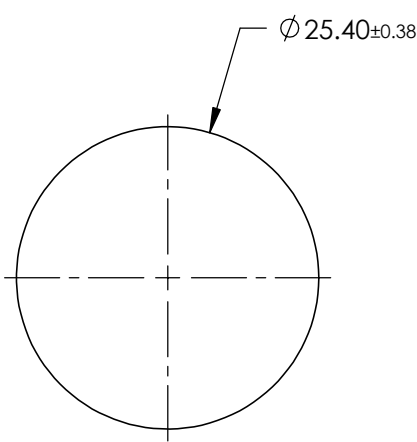
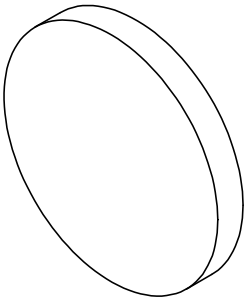
Ø25.4mm, RG-645 LONGPASS FILTER

DWG NO

64513

SHEET
1 OF 1

FOR INFORMATION ONLY:
DO NOT MANUFACTURE
PARTS TO THIS DRAWING



LONGPASS FILTER

SPECIFICATIONS SUBJECT TO CHANGE WITHOUT NOTICE
DIMENSIONS ARE FOR REFERENCE ONLY

REV. A	VALUE
SHAPE	PLANO
SPECTRAL TRANSMITTANCE $\tau_{ip}(\%)$	93
PASSBAND LIMIT $\lambda_{pl} \text{ (nm)}$	400
CUT-OFF POSITION $\lambda_c \text{ (nm)}$	370±6
STOPBAND LIMIT $\lambda_s \text{ (nm)}$	323
WAVELENGTH	UV
BEVEL	PROTECTIVE AS NEEDED

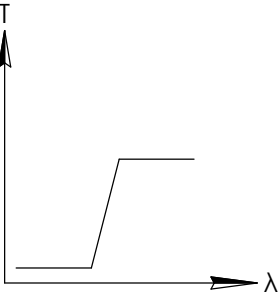
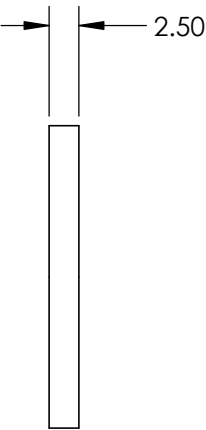
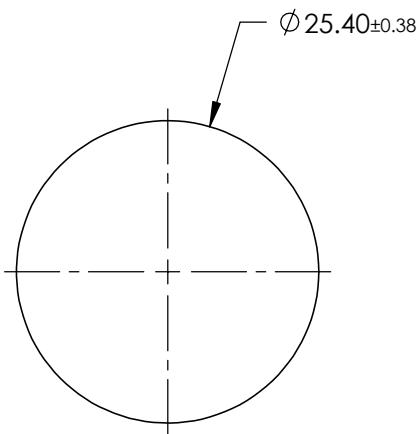
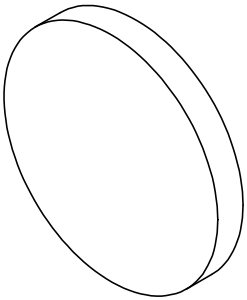


TITLE	Ø25.4mm, L-37 LONGPASS FILTER		
DWG NO	66049	SHEET 1 OF 1	

ALL DIMS IN

mm

FOR INFORMATION ONLY:
DO NOT MANUFACTURE
PARTS TO THIS DRAWING



LONGPASS FILTER

SPECIFICATIONS SUBJECT TO CHANGE WITHOUT NOTICE
DIMENSIONS ARE FOR REFERENCE ONLY

REV. A	VALUE
SHAPE	PLANO
SPECTRAL TRANSMITTANCE $\tau_{ip}(\%)$	92
PASSBAND LIMIT $\lambda_{pl} \text{ (nm)}$	520
CUT-OFF POSITION $\lambda_c \text{ (nm)}$	500±6
STOPBAND LIMIT $\lambda_s \text{ (nm)}$	458
WAVELENGTH	VIS
BEVEL	PROTECTIVE AS NEEDED

 **Edmund Optics®**



ALL DIMS IN

mm

TITLE

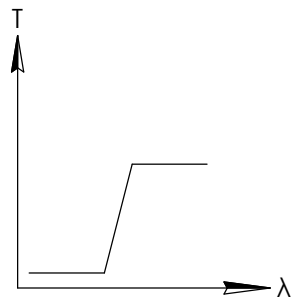
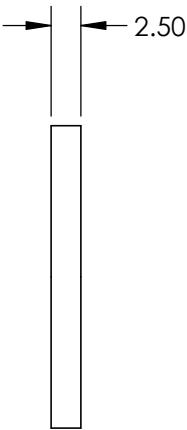
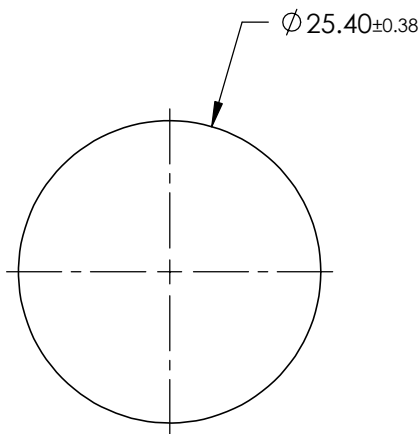
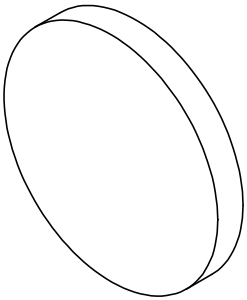
Ø25.4mm, Y-50 LONGPASS FILTER

DWG NO

66050

SHEET
1 OF 1

FOR INFORMATION ONLY:
DO NOT MANUFACTURE
PARTS TO THIS DRAWING



LONGPASS FILTER

SPECIFICATIONS SUBJECT TO CHANGE WITHOUT NOTICE
DIMENSIONS ARE FOR REFERENCE ONLY

REV. A	VALUE
SHAPE	PLANO
SPECTRAL TRANSMITTANCE $\tau_{ip}(\%)$	95
PASSBAND LIMIT $\lambda_{pl} \text{ (nm)}$	570
CUT-OFF POSITION $\lambda_c \text{ (nm)}$	540±6
STOPBAND LIMIT $\lambda_s \text{ (nm)}$	498
WAVELENGTH	VIS
BEVEL	PROTECTIVE AS NEEDED

 **Edmund Optics®**



ALL DIMS IN

mm

TITLE

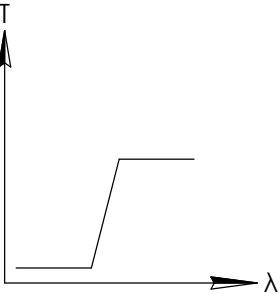
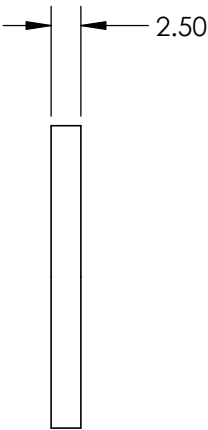
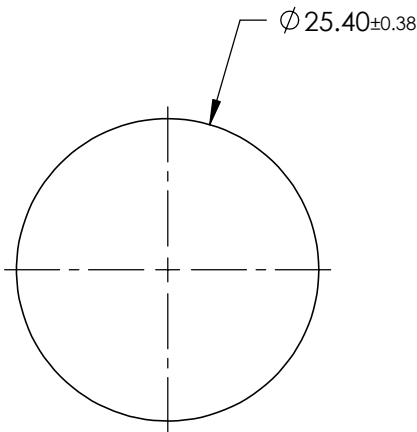
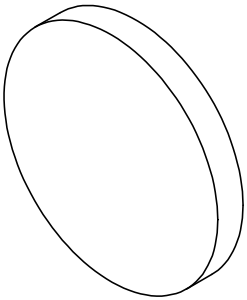
Ø25.4mm, O-54 LONGPASS FILTER

DWG NO

66051

SHEET
1 OF 1

**FOR INFORMATION ONLY:
DO NOT MANUFACTURE
PARTS TO THIS DRAWING**



LONGPASS FILTER

SPECIFICATIONS SUBJECT TO CHANGE WITHOUT NOTICE
DIMENSIONS ARE FOR REFERENCE ONLY

REV. A	VALUE
SHAPE	PLANO
SPECTRAL TRANSMITTANCE $\tau_{ip}(\%)$	96
PASSBAND LIMIT $\lambda_{pl} \text{ (nm)}$	590
CUT-OFF POSITION $\lambda_c \text{ (nm)}$	560±6
STOPBAND LIMIT $\lambda_s \text{ (nm)}$	518
WAVELENGTH	VIS
BEVEL	PROTECTIVE AS NEEDED

EO[®] Edmund Optics[®]



ALL DIMS IN

mm

TITLE

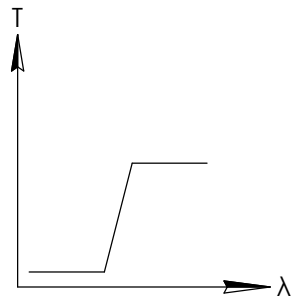
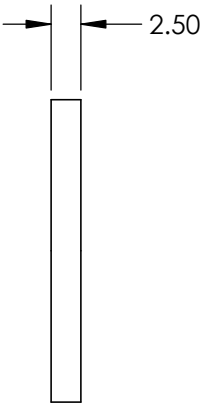
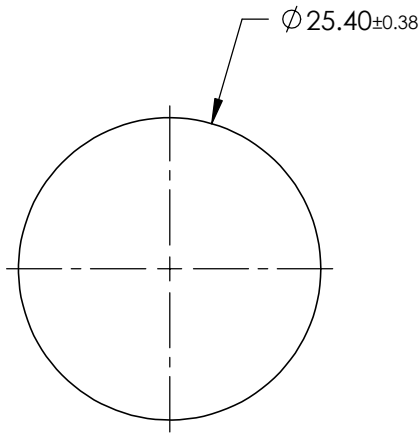
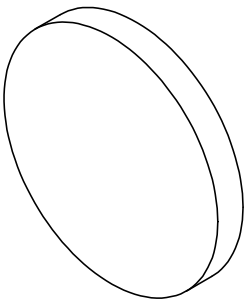
Ø25.4mm, O-56 LONGPASS FILTER

DWG NO

66052

SHEET
1 OF 1

**FOR INFORMATION ONLY:
DO NOT MANUFACTURE
PARTS TO THIS DRAWING**



LONGPASS FILTER

SPECIFICATIONS SUBJECT TO CHANGE WITHOUT NOTICE
DIMENSIONS ARE FOR REFERENCE ONLY

REV. A	VALUE
SHAPE	PLANO
SPECTRAL TRANSMITTANCE $\tau_{ip}(\%)$	96
PASSBAND LIMIT $\lambda_{pl} \text{ (nm)}$	610
CUT-OFF POSITION $\lambda_c \text{ (nm)}$	580±6
STOPBAND LIMIT $\lambda_s \text{ (nm)}$	538
WAVELENGTH	VIS
BEVEL	PROTECTIVE AS NEEDED



ALL DIMS IN

mm

TITLE

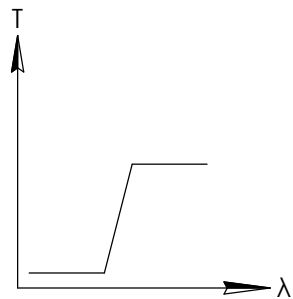
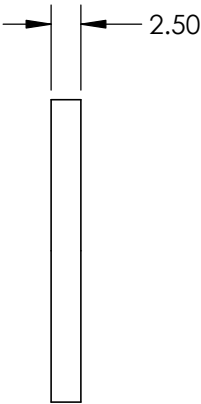
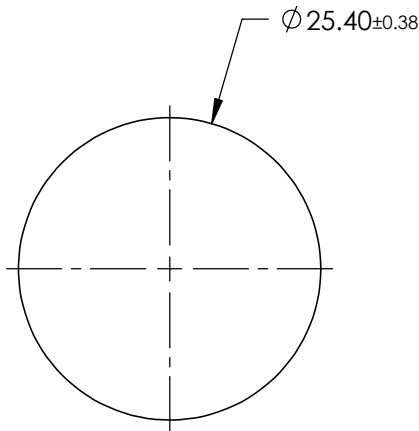
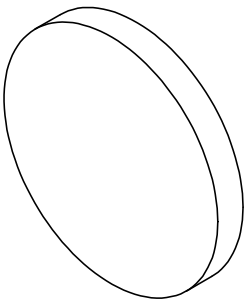
Ø25.4mm, O-58 LONGPASS FILTER

DWG NO

66053

SHEET
1 OF 1

**FOR INFORMATION ONLY:
DO NOT MANUFACTURE
PARTS TO THIS DRAWING**



LONGPASS FILTER

SPECIFICATIONS SUBJECT TO CHANGE WITHOUT NOTICE
DIMENSIONS ARE FOR REFERENCE ONLY

REV. A	VALUE
SHAPE	PLANO
SPECTRAL TRANSMITTANCE $\tau_{ip}(\%)$	93
PASSBAND LIMIT $\lambda_{pl} \text{ (nm)}$	620
CUT-OFF POSITION $\lambda_c \text{ (nm)}$	600±6
STOPBAND LIMIT $\lambda_s \text{ (nm)}$	558
WAVELENGTH	VIS
BEVEL	PROTECTIVE AS NEEDED



ALL DIMS IN

mm

TITLE

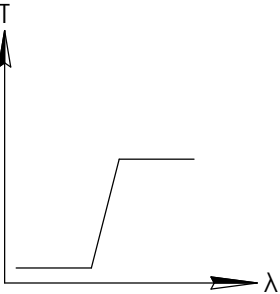
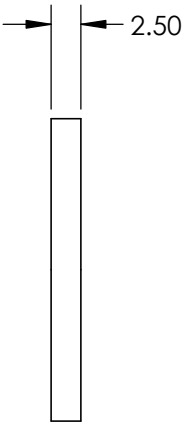
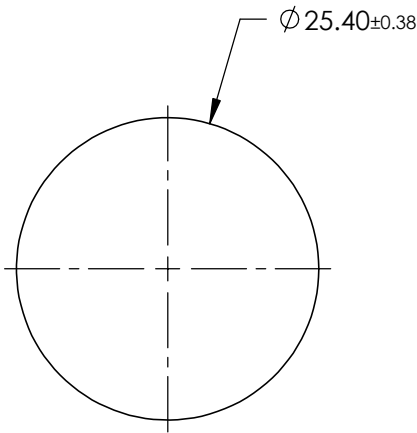
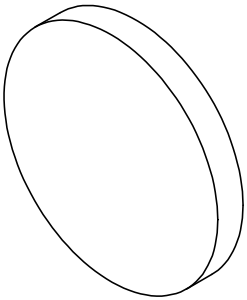
Ø25.4mm, R-60 LONGPASS FILTER

DWG NO

66054

SHEET
1 OF 1

**FOR INFORMATION ONLY:
DO NOT MANUFACTURE
PARTS TO THIS DRAWING**



LONGPASS FILTER

SPECIFICATIONS SUBJECT TO CHANGE WITHOUT NOTICE
DIMENSIONS ARE FOR REFERENCE ONLY

REV. A	VALUE
SHAPE	PLANO
SPECTRAL TRANSMITTANCE $\tau_{ip}(\%)$	96
PASSBAND LIMIT $\lambda_{pl} \text{ (nm)}$	650
CUT-OFF POSITION $\lambda_c \text{ (nm)}$	620±6
STOPBAND LIMIT $\lambda_s \text{ (nm)}$	578
WAVELENGTH	VIS
BEVEL	PROTECTIVE AS NEEDED

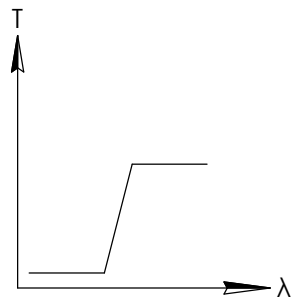
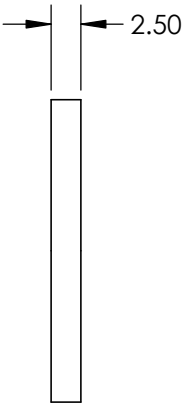
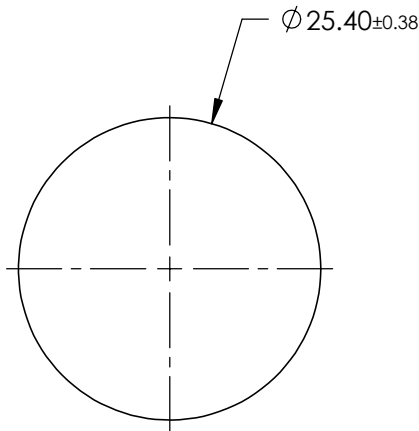
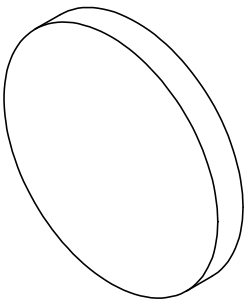


TITLE	Ø25.4mm, R-62 LONGPASS FILTER		
DWG NO	66055	SHEET 1 OF 1	

ALL DIMS IN

mm

**FOR INFORMATION ONLY:
DO NOT MANUFACTURE
PARTS TO THIS DRAWING**



LONGPASS FILTER

SPECIFICATIONS SUBJECT TO CHANGE WITHOUT NOTICE
DIMENSIONS ARE FOR REFERENCE ONLY

REV. A	VALUE
SHAPE	PLANO
SPECTRAL TRANSMITTANCE $\tau_{ip}(\%)$	94
PASSBAND LIMIT $\lambda_{pl} \text{ (nm)}$	680
CUT-OFF POSITION $\lambda_c \text{ (nm)}$	660±6
STOPBAND LIMIT $\lambda_s \text{ (nm)}$	613
WAVELENGTH	VIS
BEVEL	PROTECTIVE AS NEEDED

EO[®] Edmund Optics[®]



ALL DIMS IN

mm

TITLE

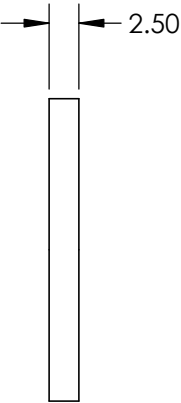
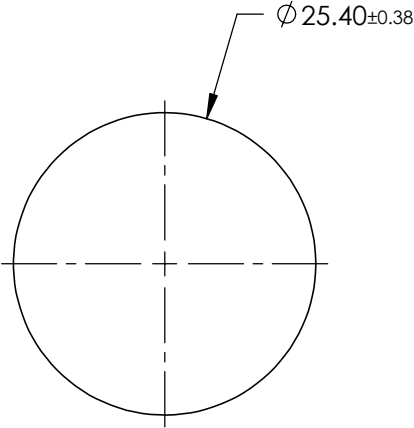
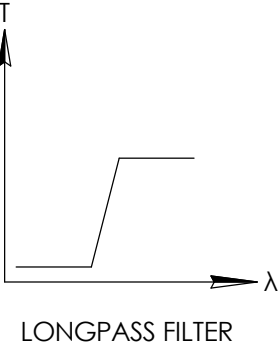
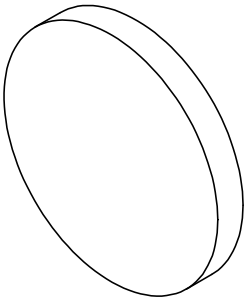
Ø25.4mm, R-66 LONGPASS FILTER

DWG NO

66056

SHEET
1 OF 1

FOR INFORMATION ONLY:
DO NOT MANUFACTURE
PARTS TO THIS DRAWING



SPECIFICATIONS SUBJECT TO CHANGE WITHOUT NOTICE
DIMENSIONS ARE FOR REFERENCE ONLY

REV. A	VALUE
SHAPE	PLANO
SPECTRAL TRANSMITTANCE $\tau_{ip}(\%)$	93
PASSBAND LIMIT $\lambda_{pl} \text{ (nm)}$	750
CUT-OFF POSITION $\lambda_c \text{ (nm)}$	720±9
STOPBAND LIMIT $\lambda_s \text{ (nm)}$	648
WAVELENGTH	IR
BEVEL	PROTECTIVE AS NEEDED



ALL DIMS IN

mm

TITLE

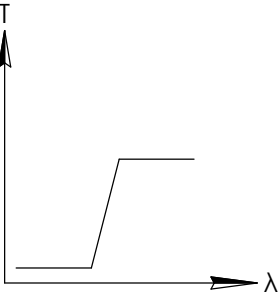
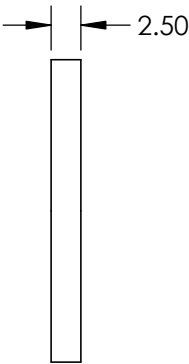
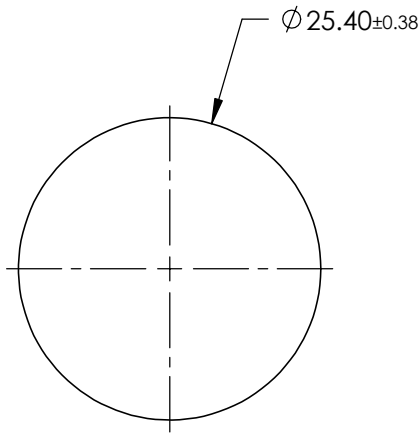
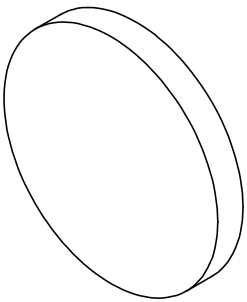
Ø25.4mm, R-72 LONGPASS FILTER

DWG NO

66057

SHEET
1 OF 1

**FOR INFORMATION ONLY:
DO NOT MANUFACTURE
PARTS TO THIS DRAWING**



LONGPASS FILTER

SPECIFICATIONS SUBJECT TO CHANGE WITHOUT NOTICE
DIMENSIONS ARE FOR REFERENCE ONLY

REV. A	VALUE
SHAPE	PLANO
SPECTRAL TRANSMITTANCE $\tau_{ip}(\%)$	94
PASSBAND LIMIT $\lambda_{pl} \text{ (nm)}$	800
CUT-OFF POSITION $\lambda_c \text{ (nm)}$	760±9
STOPBAND LIMIT $\lambda_s \text{ (nm)}$	700
WAVELENGTH	IR
BEVEL	PROTECTIVE AS NEEDED



ALL DIMS IN

mm

TITLE

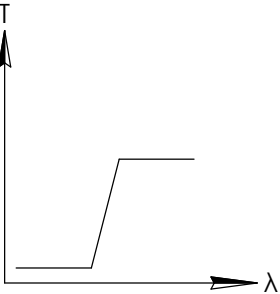
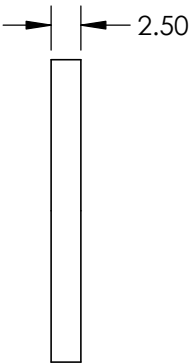
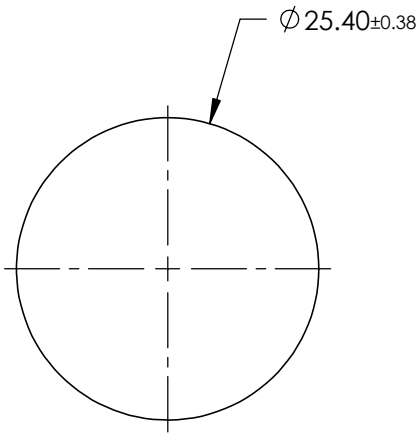
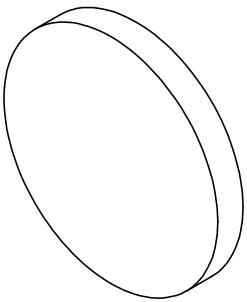
Ø25.4mm, IR-76 LONGPASS FILTER

DWG NO

66058

SHEET
1 OF 1

**FOR INFORMATION ONLY:
DO NOT MANUFACTURE
PARTS TO THIS DRAWING**



LONGPASS FILTER

SPECIFICATIONS SUBJECT TO CHANGE WITHOUT NOTICE
DIMENSIONS ARE FOR REFERENCE ONLY

REV. A	VALUE
SHAPE	PLANO
SPECTRAL TRANSMITTANCE $\tau_{ip}(\%)$	96
PASSBAND LIMIT $\lambda_{pl} \text{ (nm)}$	850
CUT-OFF POSITION $\lambda_c \text{ (nm)}$	800±9
STOPBAND LIMIT $\lambda_s \text{ (nm)}$	740
WAVELENGTH	IR
BEVEL	PROTECTIVE AS NEEDED



ALL DIMS IN

mm

TITLE

Ø25.4mm, IR-80 LONGPASS FILTER

DWG NO

66059

SHEET
1 OF 1