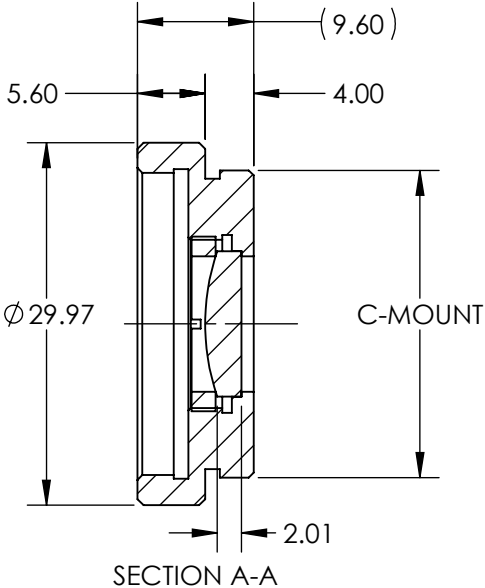
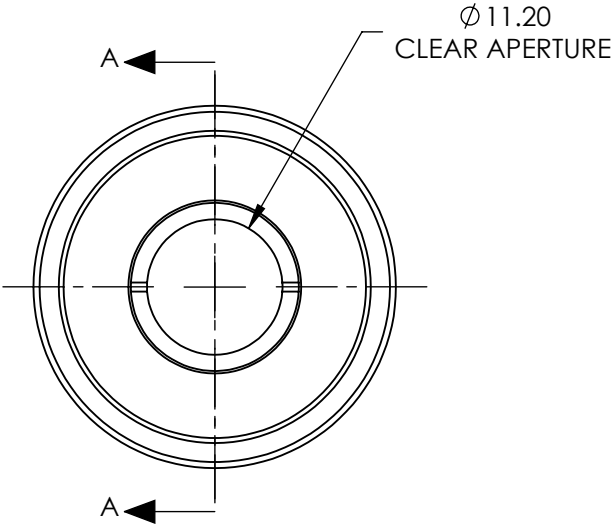


NOTES:

1. SUBSTRATE:  
N-BK7
2. ROHS COMPLIANT
3. COATING (APPLY ACROSS COATING APERTURE)  
S1 & S2: MgF2 (400-700nm)  
R(AVG) ≤1.75% @ 400 - 700nm
4. FOCAL LENGTH (EFL): 36.00 ±1 %  
FOCAL LENGTH (BFL) FROM MECHANICAL HOUSING: 33.02
5. LENS INCLUDED: #33-353  
MOUNT INCLUDED: #54-615

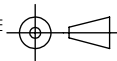
**FOR INFORMATION ONLY:  
DO NOT MANUFACTURE  
PARTS TO THIS DRAWING**



SPECIFICATIONS SUBJECT TO CHANGE WITHOUT NOTICE  
DIMENSIONS ARE FOR REFERENCE ONLY

	S1	S2
SHAPE	CONVEX	PLANO
RADIUS	18.61	INFINITY
SURFACE QUALITY	40-20	40-20
POWER AT 632.8nm	1.5 $\lambda$	1.5 $\lambda$
IRREGULARITY AT 632.8nm	$\lambda/4$	$\lambda/4$

THIRD ANGLE  
PROJECTION



ALL DIMS IN

mm



**Edmund Optics®**

TITLE

11.2mm CA, 36mm FL, Mounted MgF2  
Coated Plano-Convex Lens

DWG NO

12919

SHEET  
1 OF 1