

NOTES:

- 1. SUBSTRATE: FUSED SILICA
- 2. SURFACE S2 TO BE PARALLEL TO SURFACE S1 TO WITHIN <5 ARCMIN
- 3. COATING (APPLY ACROSS COATING APERTURE)
S1: R(AVG) > 99.7% 700 - 900nm @ 45° AOI

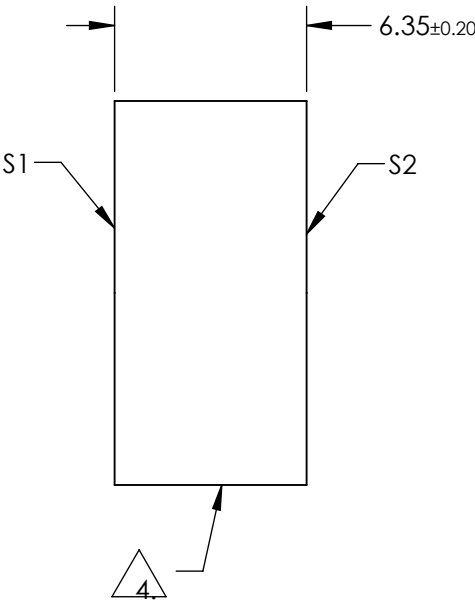
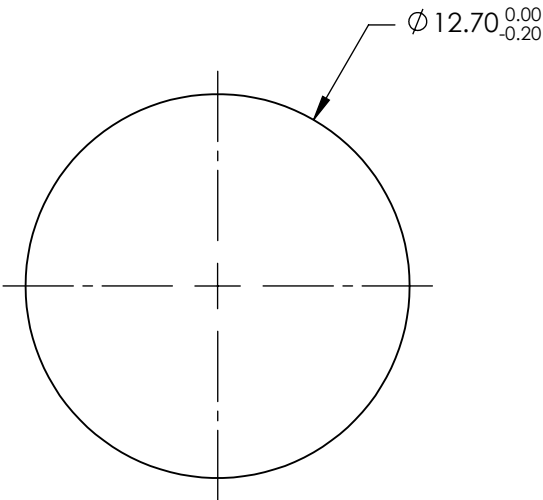
GDD:
S-POLARIZATION: 0 ± 20fs² @ 700 - 900nm
P-POLARIZATION: 0 ± 20fs² @ 740 - 860nm

TOD:
S-POLARIZATION: 10fs² @ 800nm
P-POLARIZATION: 40fs² @ 800nm

S2: NONE


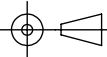
4. FINE GRIND SURFACE

5. RoHS: COMPLIANT



**FOR INFORMATION ONLY:
DO NOT MANUFACTURE
PARTS TO THIS DRAWING**

SPECIFICATIONS SUBJECT TO CHANGE WITHOUT NOTICE
DIMENSIONS ARE FOR REFERENCE ONLY

	S1	S2	 Edmund Optics®			
SHAPE	PLANO	PLANO		TITLE	700 - 900nm, 12.7mm DIA., ULTRAFAST BROADBAND LASER MIRROR	
SURFACE QUALITY	10-5	COMMERCIAL POLISH		DWG NO	62765	SHEET 1 OF 1
SURFACE FLATNESS	λ/10	N/A				
CLEAR APERTURE	Ø10.80	N/A				
BEVEL	PROTECTIVE AS NEEDED	PROTECTIVE AS NEEDED	ALL DIMS IN	mm		