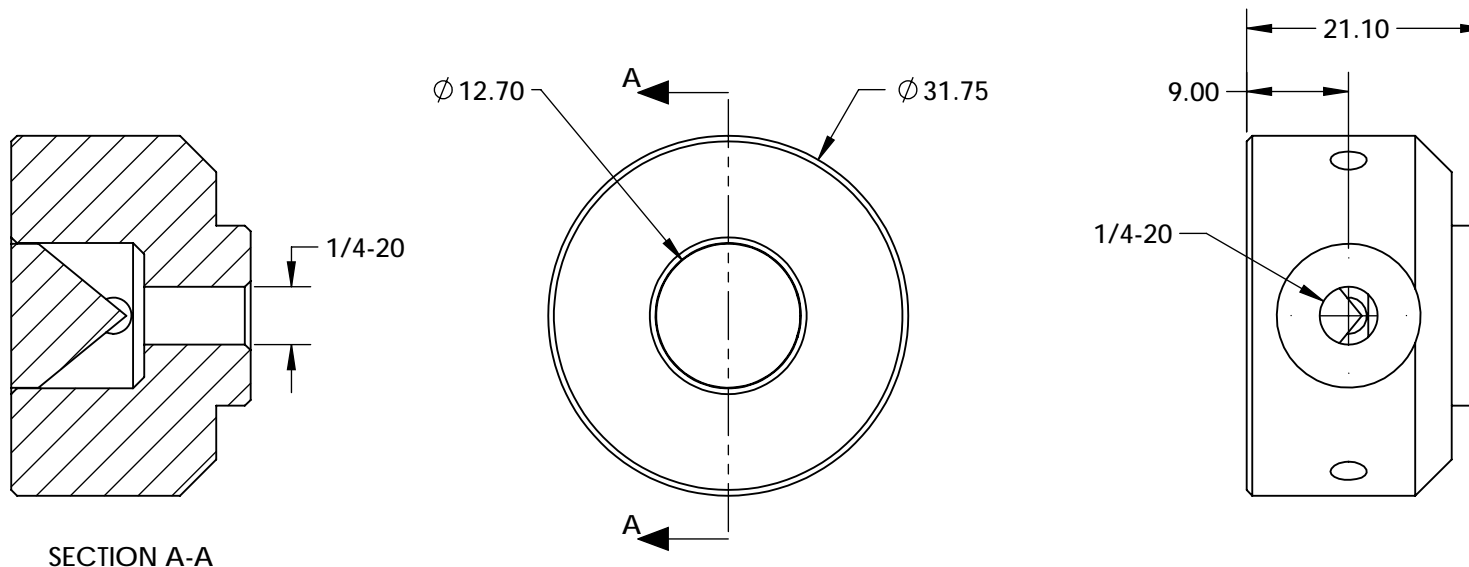


NOTES:

1. MATERIAL:  
HOUSING: BLACK ANODIZED ALUMINUM  
CORNER CUBE: N-BK7
2. COATING SPECIFICATION (APPLY ACROSS CLEAR APERTURE)  
REFLECTIVE SURFACES:  $R(ABS) > 97\%$  @ 400 - 2500nm @ 0° AOI  
 $R(AVG) > 98\%$  @ 400 - 2500nm @ 0° AOI  
ENTRANCE:  $R_{abs} \leq 1.5\%$  @ 750 - 800nm  
 $R_{abs} \leq 1.0\%$  @ 800 - 1550nm  
 $R_{avg} \leq 0.7\%$  @ 750 - 1550nm
3. RoHS: COMPLIANT



SPECIFICATIONS SUBJECT TO CHANGE WITHOUT NOTICE  
DIMENSIONS ARE FOR REFERENCE ONLY

**FOR INFORMATION ONLY:  
DO NOT MANUFACTURE  
PARTS TO THIS DRAWING**

**EO**® Edmund Optics®

THIRD ANGLE PROJECTION 		TITLE	12.7mm SILVER AND NIR II COATED, MOUNTED CORNER CUBE RETROREFLECTOR	
ALL DIMS IN	mm	DWG NO	12671	SHEET 1 OF 1