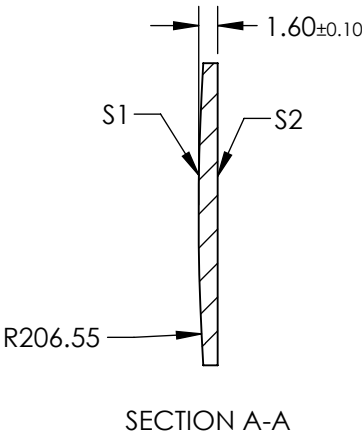
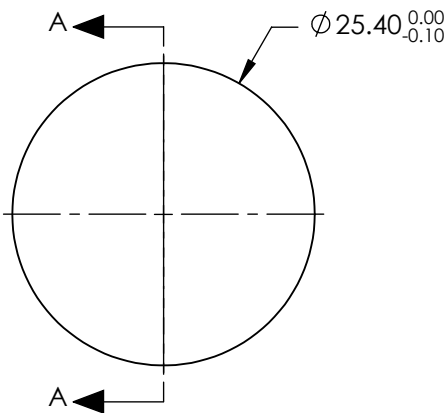


NOTES:


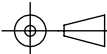
- 1. SUBSTRATE: FUSED SILICA
- 2. COATING:
S1 & S2: R(ABS) <0.5% @ 370 - 550nm
- 3. CENTERING: < 3 ARCMIN
- 4. RoHS: COMPLIANT

FOR INFORMATION ONLY:
DO NOT MANUFACTURE
PARTS TO THIS DRAWING



SPECIFICATIONS SUBJECT TO CHANGE WITHOUT NOTICE
DIMENSIONS ARE FOR REFERENCE ONLY

| | S1 | S2 |
|-----------------|----------------------|----------------------|
| SHAPE | CONVEX | PLANO |
| SURFACE QUALITY | 20-10 | 20-10 |
| CLEAR APERTURE | Ø22.86 | Ø22.86 |
| BEVEL | PROTECTIVE AS NEEDED | PROTECTIVE AS NEEDED |

| | | | |
|---|----|--|--|
| EFL: 450.52mm | |  Edmund Optics® | |
| BFL: 449.43mm | | | |
|  | | TITLE | 25.4mm Diameter x 450mm FL, 370-550nm Coated, Ultrafast Thin PCX Lens |
| ALL DIMS IN | mm | DWG NO | 11684 |
| | | | SHEET 1 OF 1 |