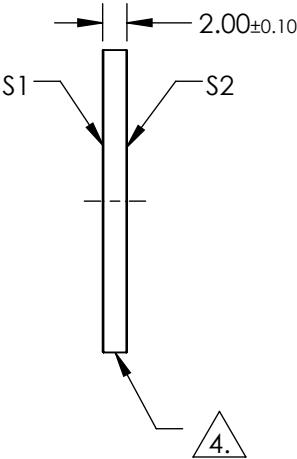
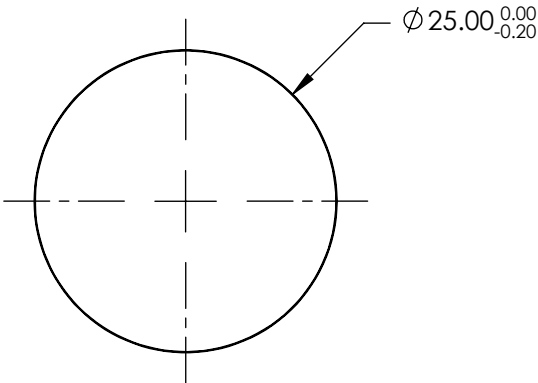

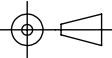


- NOTES:
- 1. SUBSTRATE:
UV GRADE FUSED SILICA
 - 2. COATING (APPLY ACROSS COATING APERTURE):
S1 & S2: VIS-NIR (400-1000nm)
R(ABS) ≤0.25% @ 880nm
R(AVG) ≤1.25% @ 400 - 870nm
R(AVG) ≤1.25% @ 890 - 1000nm
 - 3. SURFACE S2 TO BE PARALLEL TO SURFACE S1 TO WITHIN <5 ARCSEC
 - 4. FINE GRIND SURFACE
 - 5. ROHS COMPLIANT



**FOR INFORMATION ONLY:
DO NOT MANUFACTURE
PARTS TO THIS DRAWING**

SPECIFICATIONS SUBJECT TO CHANGE WITHOUT NOTICE
DIMENSIONS ARE FOR REFERENCE ONLY

		S1	S2				 Edmund Optics®	
SHAPE		PLANO	PLANO		TITLE		25mm Dia., 2mm Thick, VIS-NIR Coated λ/10 Fused Silica Window	
SURFACE QUALITY		20-10	20-10		DWG NO		11889	
CLEAR APERTURE		Ø20.00	Ø20.00					
BEVEL		PROTECTIVE AS NEEDED	PROTECTIVE AS NEEDED		ALL DIMS IN	mm	SHEET 1 OF 1	