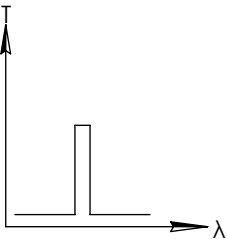
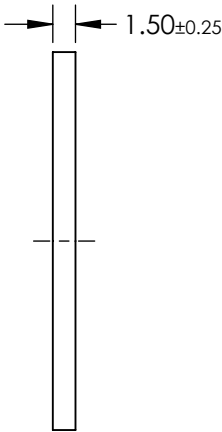
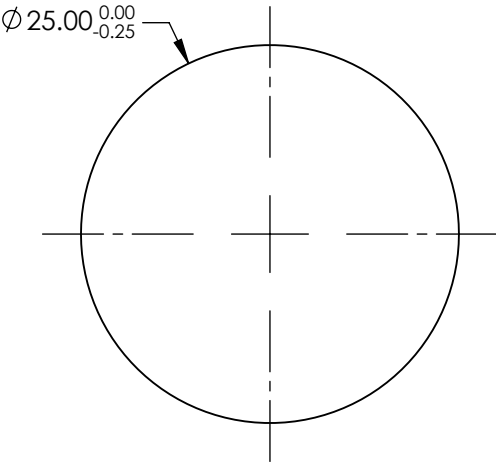
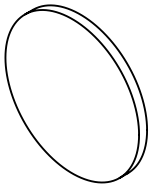


- NOTES:
- 1. SUBSTRATE: UV FUSED SILICA
  - 2. ROHS: COMPLIANT

**FOR INFORMATION ONLY:  
DO NOT MANUFACTURE  
PARTS TO THIS DRAWING**

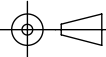


BANDPASS FILTER

SPECIFICATIONS SUBJECT TO CHANGE WITHOUT NOTICE  
DIMENSIONS ARE FOR REFERENCE ONLY

|                                 | VALUE                |
|---------------------------------|----------------------|
| SHAPE                           | PLANO                |
| SURFACE QUALITY                 | 80-50                |
| CENTER WAVELENGTH (nm)          | 239                  |
| FULL WIDTH HALF MAX (FWHM) (nm) | 10±2                 |
| MIN TRANSMISSION (%)            | 15                   |
| CLEAR APERTURE                  | Ø21.00               |
| BEVEL                           | PROTECTIVE AS NEEDED |

**EO<sup>®</sup> Edmund Optics<sup>®</sup>**

|  |    |        |  |              |
|--|----|--------|--|--------------|
| THIRD ANGLE PROJECTION  |    | TITLE  | 239nm, 10nm FWHM, 25mm DIA. FIRST SURFACE UV BANDPASS FILTER |              |
| ALL DIMS IN  | mm | DWG NO | 11988  | SHEET 1 OF 1 |