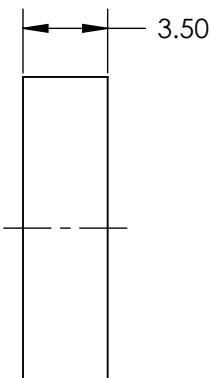
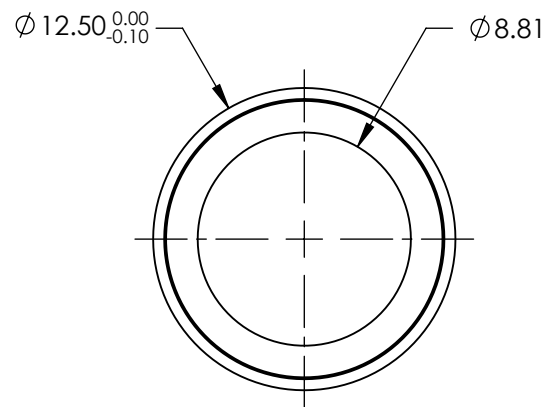
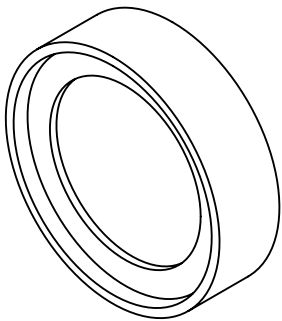


NOTES:

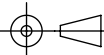
- 1. CONSTRUCTION: MOUNTED IN BLACK ANODIZED RING
- 2. COATING (APPLY ACROSS COATING APERTURE)
DURABILITY: MIL-C-48497A
PERFORMANCE SPECIFICATIONS:
CWL: 355
FWHM: 26 NOMINAL
REFLECTION %: >99.5
TRANSMISSION %: 280 - 300nm: T(AVG) >50; 300 - 700nm: T(AVG) >90
- 3. POWER, IRREGULARITY, AND SURFACE QUALITY SPECIFICATIONS
APPLY ACROSS CLEAR APERTURE
- 4. TRANSMITTED WAVEFRONT DISTORTION RMS@ <1λ
- 5. ROHS COMPLIANT



**FOR INFORMATION ONLY:
DO NOT MANUFACTURE
PARTS TO THIS DRAWING**

SPECIFICATIONS SUBJECT TO CHANGE WITHOUT NOTICE
DIMENSIONS ARE FOR REFERENCE ONLY



	S1	S2	<div>THIRD ANGLE PROJECTION</div> 		TITLE	355nm, 12.5mm Dia., OD 6 Blocking Notch Filter	
SHAPE	PLANO	PLANO					
SURFACE QUALITY	60-40	60-40	<div>ALL DIMS IN</div> <div>mm</div>		DWG NO	39386	
CLEAR APERTURE	Ø8.81	Ø8.81					
						SHEET 1 OF 1	