

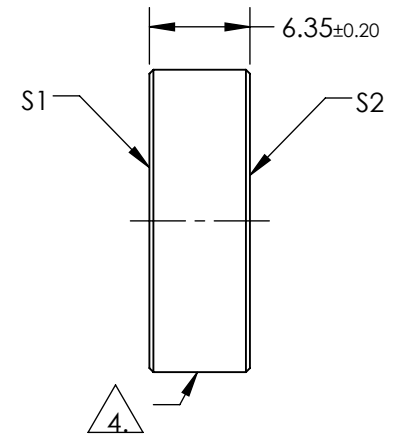
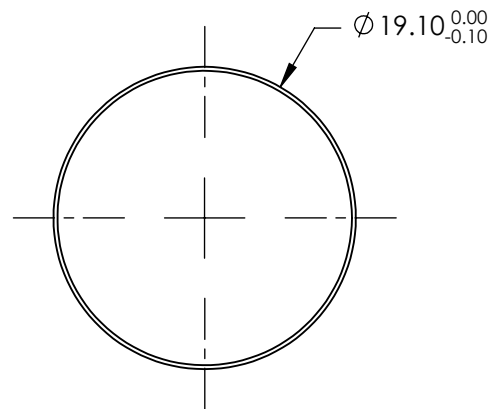
1. SUBSTRATE:  
FUSED SILICA

2. S2 TO BE PARALLEL TO S1 TO WITHIN <3 ARCMINS
3. COATING (APPLY ACROSS COATING APERTURE)  
S1 & S2: R(ABS) < 0.25% @ 980nm @ 0° AOI

DAMAGE THRESHOLD  
PULSED: 15J/cm<sup>2</sup> @ 20ns, 20Hz @ 980nm

#### 4. FINE GROUND SURFACE

5. CLEAR APERTURE AND COATING APERTURE ARE CENTERED ON SURFACE
6. SURFACE QUALITY SPECIFICATIONS APPLY ACROSS CLEAR APERTURE
7. ROHS COMPLIANT



**FOR INFORMATION ONLY:  
DO NOT MANUFACTURE  
PARTS TO THIS DRAWING**



	S1	S2
SHAPE	PLANO	PLANO
SURFACE QUALITY	10-5	10-5
SURFACE FLATNESS	$\lambda/10$	$\lambda/10$
MIN CLEAR APERTURE	Ø17.19	Ø17.19
BEVEL	PROTECTIVE AS NEEDED	PROTECTIVE AS NEEDED

THIRD ANGLE PROJECTION

ALL DIMS IN	mm
-------------	----

TITLE

Ø19.1mm x 6.35mm 980nm FS LASER  
WINDOW

DWG NO

39704

SHEET  
1 OF 1