

NOTES:

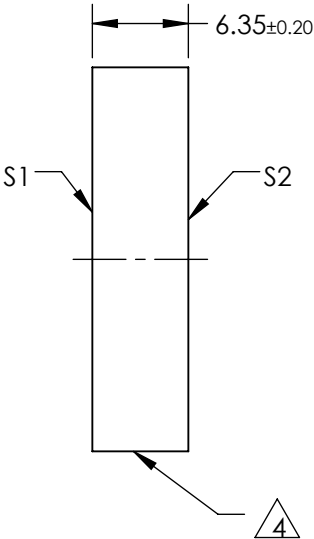
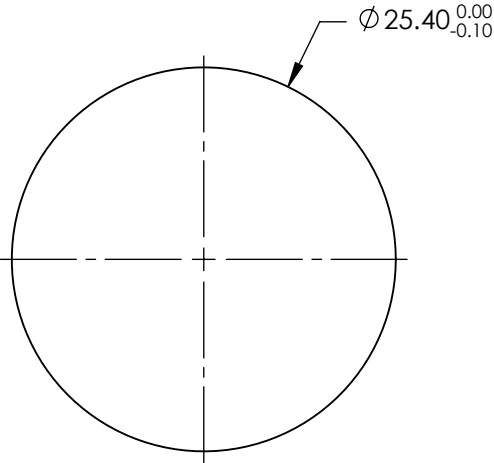
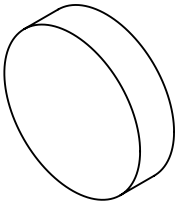
- 1. SUBSTRATE: N-BK7
- 2. SURFACE S2 TO BE PARALLEL TO SURFACE S1 TO WITHIN <3 ARCMIN
- 3. COATING (APPLY ACROSS COATING APERTURE)

S1: R(ABS) >99% @ 808nm @ 45° AOI

S2: NONE


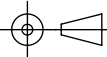
 FINE GRIND SURFACE

- 5. ROHS: COMPLIANT



**FOR INFORMATION ONLY:**  
**DO NOT MANUFACTURE**  
**PARTS TO THIS DRAWING**

SPECIFICATIONS SUBJECT TO CHANGE WITHOUT NOTICE  
DIMENSIONS ARE FOR REFERENCE ONLY

	S1	S2	 Edmund Optics®			
SHAPE	PLANO	PLANO		TITLE	25.4mm DIA. 808nm 45°, LOW COST LASER LINE MIRROR	
SURFACE QUALITY	20-10	COMMERCIAL POLISH		DWG NO	11002	SHEET 1 OF 1
SURFACE FLATNESS	$\lambda/10$	N/A				
MIN CLEAR APERTURE	Ø22.86	N/A				
BEVEL	PROTECTIVE AS NEEDED	PROTECTIVE AS NEEDED	ALL DIMS IN	mm		