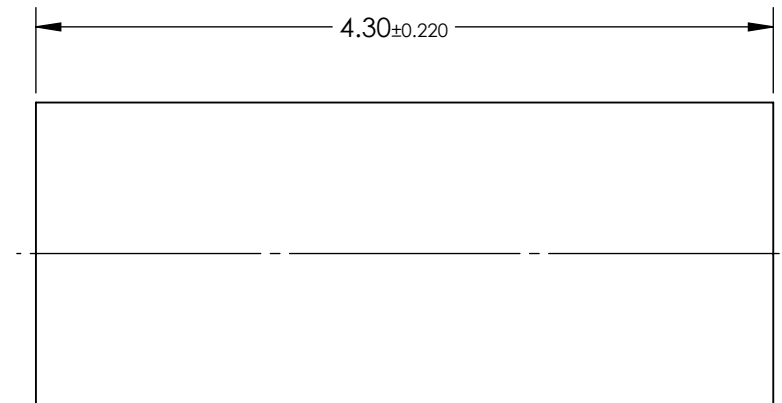
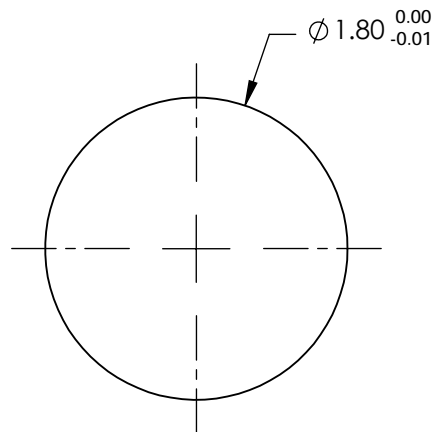



1. SUBSTRATE:
Alumosilicate Glass Embedded with Silver Ions
2. COATING (APPLY ACROSS COATING APERTURE)
S1 & S2: BBAR (1310-1550nm)
 $R(AVG) < 0.5\%$, 0 - 30°
3. EFL: 1.71
4. $f/\#$: 0.95
5. NUMERICAL APERTURE: 0.51
6. DESIGN WAVELENGTH: 1550nm
7. WORKING DISTANCE: 0mm ± 0.02
8. ROHS: COMPLIANT



**FOR INFORMATION ONLY:
DO NOT MANUFACTURE
PARTS TO THIS DRAWING**

SPECIFICATIONS SUBJECT TO CHANGE WITHOUT NOTICE
DIMENSIONS ARE FOR REFERENCE ONLY



| | | | | | | | |
|-----------------|-------|-------|---|----|--|-------|-----------------|
| | S1 | S2 | THIRD ANGLE PROJECTION  | | TITLE 1.8mm Dia, 1550nm DWL, 0.0mm WD, NIR Coated, GRIN Lens | | |
| SHAPE | PLANO | PLANO | | | | | |
| SURFACE QUALITY | 40-20 | 40-20 | | | | | |
| CLEAR APERTURE | Ø1.62 | Ø1.62 | ALL DIMS IN | mm | DWG NO | 64549 | SHEET 1 OF 1 |