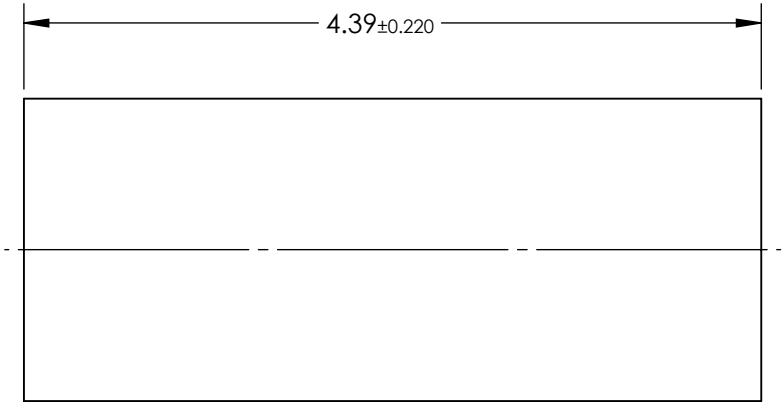
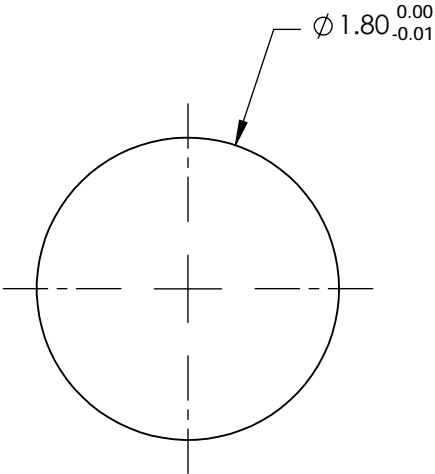


NOTES:

- 1. SUBSTRATE:
Alumoscilate Glass Embedded with Silver Ions
- 2. COATING (APPLY ACROSS COATING APERTURE)
S1 & S2: Uncoated
- 3. EFL: 1.73
- 4. f/# : 0.96
- 5. NUMERICAL APERTURE: 0.51
- 6. DESIGN WAVELENGTH: 1550nm
- 7. WORKING DISTANCE: 0mm
- 8. ROHS: COMPLIANT



**FOR INFORMATION ONLY:
DO NOT MANUFACTURE
PARTS TO THIS DRAWING**

SPECIFICATIONS SUBJECT TO CHANGE WITHOUT NOTICE
DIMENSIONS ARE FOR REFERENCE ONLY

EO® **Edmund Optics®**

	S1	S2	<div>THIRD ANGLE PROJECTION</div>		TITLE	1.8mm Dia, 1550nm DWL, 0.0mm WD, Uncoated, GRIN Lens	
SHAPE	PLANO	PLANO					
SURFACE QUALITY	40-20	40-20	<div>ALL DIMS IN</div> <div>mm</div>		DWG NO	64531	SHEET 1 OF 1
CLEAR APERTURE	Ø1.62	Ø1.62					