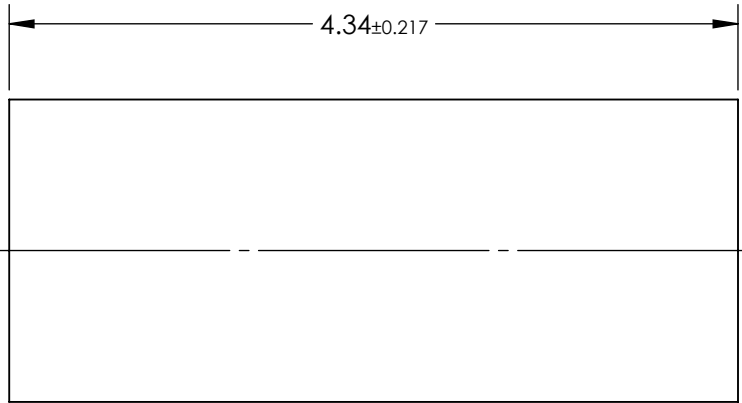
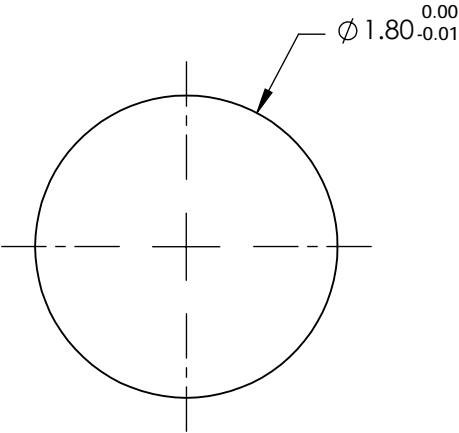


NOTES:

- 1. SUBSTRATE:
Alumoscilate Glass Embedded with Silver Ions
- 2. COATING (APPLY ACROSS COATING APERTURE)
S1 & S2: Uncoated
- 3. EFL: 1.71
- 4. f/# : 0.95
- 5. NUMERICAL APERTURE: 0.52
- 6. DESIGN WAVELENGTH: 810nm
- 7. WORKING DISTANCE: 0mm
- 8. ROHS: COMPLIANT



**FOR INFORMATION ONLY:
DO NOT MANUFACTURE
PARTS TO THIS DRAWING**

SPECIFICATIONS SUBJECT TO CHANGE WITHOUT NOTICE
DIMENSIONS ARE FOR REFERENCE ONLY

EO[®] Edmund Optics[®]

	S1	S2	THIRD ANGLE PROJECTION			
SHAPE	PLANO	PLANO				
SURFACE QUALITY	40-20	40-20				
CLEAR APERTURE	Ø1.62	Ø1.62				
			ALL DIMS IN	mm	DWG NO	SHEET
			64525			1 OF 1