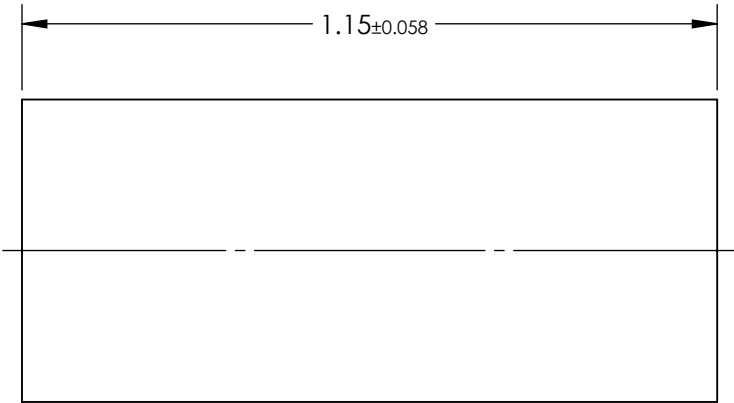
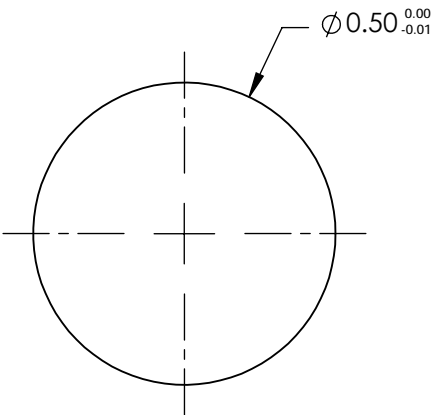


NOTES:

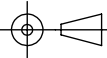
- 1. SUBSTRATE:
Alumoscilate Glass Embedded with Silver Ions
- 2. COATING (APPLY ACROSS COATING APERTURE)
S1 & S2: Uncoated
- 3. EFL: 0.45
- 4. f/# : 0.9
- 5. NUMERICAL APERTURE: 0.54
- 6. DESIGN WAVELENGTH: 670nm
- 7. WORKING DISTANCE: 0mm ±0.02
- 8. ROHS: COMPLIANT



**FOR INFORMATION ONLY:
DO NOT MANUFACTURE
PARTS TO THIS DRAWING**

SPECIFICATIONS SUBJECT TO CHANGE WITHOUT NOTICE
DIMENSIONS ARE FOR REFERENCE ONLY

EO[®] Edmund Optics[®]

	S1	S2				
SHAPE	PLANO	PLANO	<div>THIRD ANGLE PROJECTION</div> 	TITLE	0.5mm Dia, 670nm DWL, 0.0mm WD, Uncoated, GRIN Lens	
SURFACE QUALITY	40-20	40-20				
CLEAR APERTURE	Ø0.45	Ø0.45				
			ALL DIMS IN	mm	DWG NO	64515
					SHEET 1 OF 1	