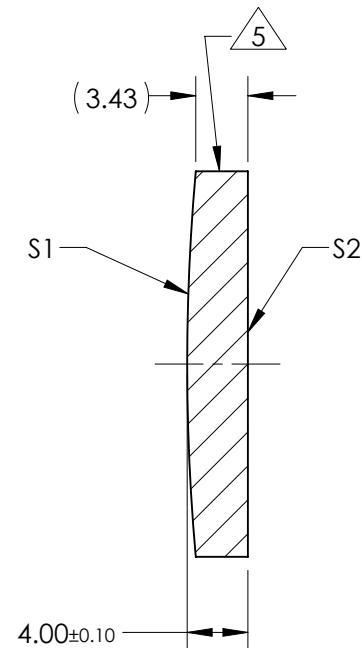
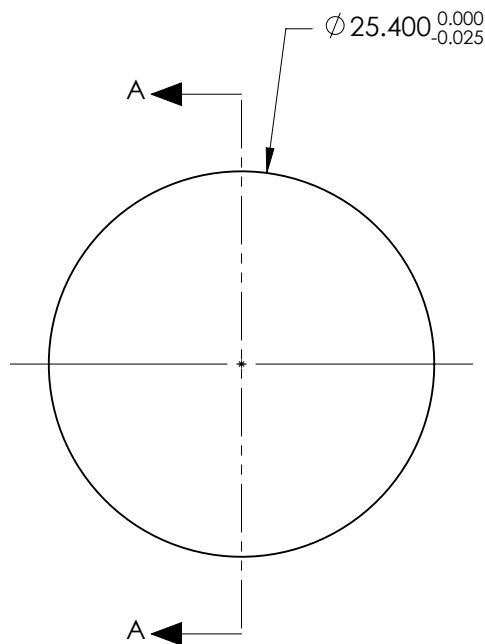


NOTES:

1. SUBSTRATE:  
CORNING: FUSED SILICA 458/678
2. ROHS COMPLIANT
3. CENTERING TOLERANCE (AT 587.6nm):  
BEAM DEVIATION (HALF ANGLE): <1 ARCMIN
4. COATING (APPLY ACROSS COATING APERTURE)  
S1 & S2: 266nm Laser AR Coating  
R(ABS) < 0.25% @ 266nm @ 0° AOI  
  
DAMAGE THRESHOLD  
PULSED: 3J/cm<sup>2</sup> @ 20ns, 20Hz @ 266nm

5. FINE GRIND SURFACE

6. POWER, IRREGULARITY, AND SURFACE QUALITY SPECIFICATIONS APPLY ACROSS CLEAR APERTURE
7. FOCAL LENGTH (EFL): 300.00mm ±1%  
BACK FOCAL LENGTH (BFL): 297.38mm
8. PROTECTIVE BEVEL AS NEEDED
9. DESIGN WAVELENGTH: 355nm



SECTION A-A

**FOR INFORMATION ONLY:  
DO NOT MANUFACTURE  
PARTS TO THIS DRAWING**

|                         | S1        | S2        |
|-------------------------|-----------|-----------|
| SHAPE                   | CONVEX    | PLANO     |
| RADIUS                  | 142.83    | INFINITY  |
| SURFACE QUALITY         | 10 - 5    | 10 - 5    |
| MIN CLEAR APERTURE      | Ø 21.59   | Ø 21.59   |
| MIN COATING APERTURE    | Ø 21.59   | Ø 21.59   |
| POWER AT 632.8nm        | 2.0 RINGS | 2.0 RINGS |
| IRREGULARITY AT 632.8nm | 0.2 RINGS | 0.2 RINGS |

SPECIFICATIONS SUBJECT TO CHANGE WITHOUT NOTICE  
DIMENSIONS ARE FOR REFERENCE ONLY

**EO**® **Edmund Optics**®

|                           |    |
|---------------------------|----|
| THIRD ANGLE<br>PROJECTION |    |
| ALL DIMS IN               | mm |

|        |   |       |        |
|--------|---|-------|--------|
| TITLE  | 25.4mm Dia x 300mm EFL, 266nm<br>Coated, Laser Grade PCX Lens |       |        |
| DWG NO | 38653   | SHEET | 1 OF 1 |