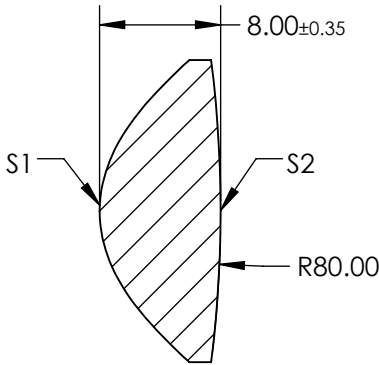
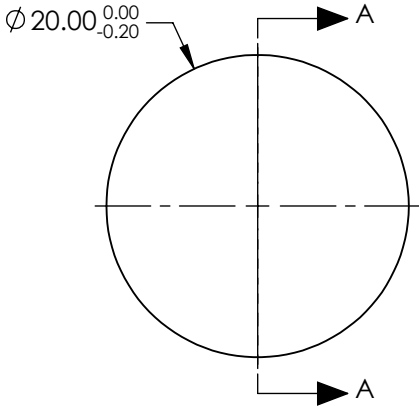


NOTES:

FOR INFORMATION ONLY:
DO NOT MANUFACTURE
PARTS TO THIS DRAWING

- 1. SUBSTRATE: LIBA2000+
- 2. COATING:
S1 & S2: R(AVG) ≤ 1.75% @400 - 700
- 3. FOCAL LENGTH TOLERANCE: ±7%
- 4. CENTERING: 30 ARCMIN
- 5. RoHS: COMPLIANT
- 6. ASPHERIC SURFACE DESCRIBED BY THE FOLLOWING EQUATION AND COEFFICIENTS SHOWN IN TABLE BELOW

$$Z_{ASPH}(Y) = \frac{(\frac{1}{RADIUS}) * Y^2}{1 + \sqrt{1 - (1 + k) * (\frac{1}{RADIUS})^2 * Y^2}} + D * Y^2 + E * Y^4 + F * Y^6 + G * Y^8 + H * Y^{10} + J * Y^{12} + L * Y^{14}$$


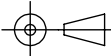


SECTION A-A

| COEFFICIENT TABLE | |
|-------------------|---------------|
| COEFFICIENT | S1 |
| SEMI-DIAMETER | 10.000000E+00 |
| (1/RADIUS) | 0.119058E+00 |
| k | -0.958000E+00 |
| D | 0.000000E+00 |
| E | 4.314000E-05 |
| F | -5.400000E-07 |
| G | 0.000000E+00 |
| H | 0.000000E+00 |
| J | 0.000000E+00 |
| L | 0.000000E+00 |

SPECIFICATIONS SUBJECT TO CHANGE WITHOUT NOTICE
DIMENSIONS ARE FOR REFERENCE ONLY

| | S1 | S2 |
|-----------------|----------------------|----------------------|
| SHAPE | CONVEX | CONVEX |
| SURFACE QUALITY | As Molded | As Molded |
| CLEAR APERTURE | Ø16.00 | Ø16.00 |
| BEVEL | PROTECTIVE AS NEEDED | PROTECTIVE AS NEEDED |

| | | | | |
|---|----|---|---|-----------------|
| EFL: 16mm | | <div> Edmund Optics®</div> | | |
| BFL: 9.53mm | | | | |
| THIRD ANGLE PROJECTION  | | TITLE | 20mm DIA. X 16mm FL, MgF2 MOLDED ASPHERIC CONDENSER LENS | |
| ALL DIMS IN | mm | DWG NO | 35062 | SHEET 1 OF 1 |