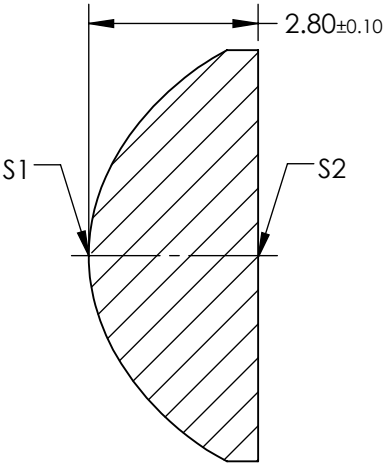
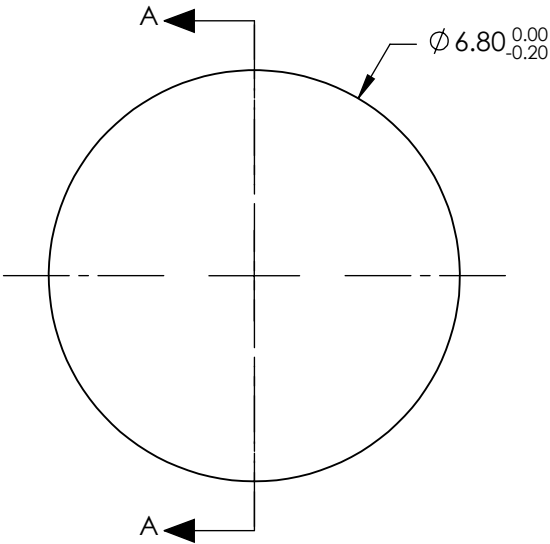


NOTES:

1. SUBSTRATE: LIBA2000+
2. COATING:  
S1 & S2: NONE
3. FOCAL LENGTH TOLERANCE: ±5%
4. CENTERING: 25 ARCMIN
5. RoHS: COMPLIANT
6. ASPHERIC SURFACE DESCRIBED BY THE FOLLOWING EQUATION AND COEFFICIENTS SHOWN IN TABLE BELOW

$$Z_{ASPH}(Y) = \frac{(\frac{1}{RADIUS}) * Y^2}{1 + \sqrt{1 - (1+k) * (\frac{1}{RADIUS})^2 * Y^2}} + D * Y^2 + E * Y^4 + F * Y^6 + G * Y^8 + H * Y^{10} + J * Y^{12} + L * Y^{14}$$

**FOR INFORMATION ONLY:  
DO NOT MANUFACTURE  
PARTS TO THIS DRAWING**


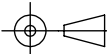


SECTION A-A

| COEFFICIENT TABLE |               |
|-------------------|---------------|
| COEFFICIENT       | S1            |
| SEMI-DIAMETER     | 3.400000E+00  |
| (1/RADIUS)        | 0.320513E+00  |
| k                 | -0.327000E+00 |
| D                 | 0.001488E+00  |
| E                 | -0.000725E+00 |
| F                 | -0.000079+00  |
| G                 | -3.995900E-06 |
| H                 | 0.000000E+00  |
| J                 | 0.000000E+00  |
| L                 | 0.000000E+00  |

SPECIFICATIONS SUBJECT TO CHANGE WITHOUT NOTICE  
DIMENSIONS ARE FOR REFERENCE ONLY

|                 | S1                   | S2                   |
|-----------------|----------------------|----------------------|
| SHAPE           | CONVEX               | PLANO                |
| SURFACE QUALITY | As Molded            | As Molded            |
| CLEAR APERTURE  | Ø5.44                | Ø5.44                |
| BEVEL           | PROTECTIVE AS NEEDED | PROTECTIVE AS NEEDED |

|   |    |   |   |                 |
|---|----|---|---|-----------------|
| EFL: 6mm  |    | <div> Edmund Optics®</div> |   |                 |
| BFL: 4.23mm   |    |   |   |                 |
| THIRD ANGLE<br>PROJECTION  |    | TITLE   | 6.8mm DIA. X 6mm FL, UNCOATED MOLDED<br>ASPHERIC CONDENSER LENS |                 |
| ALL DIMS IN   | mm | DWG NO  | 34456   | SHEET<br>1 OF 1 |