

NOTES:

1. SUBSTRATE MATERIAL:  
FUSED SILICA
2. COATING (APPLY ACROSS CLEAR APERTURE)

S1 & S2: UV-VIS

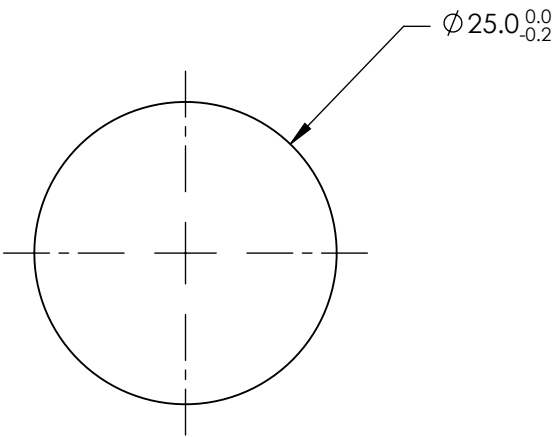
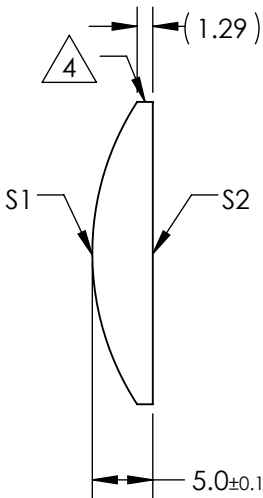
R(abs) ≤1.0% @ 350 - 450nm  
R(avg) ≤1.5% @ 250 - 700nm

3. WEDGE TOLERANCE: <15 arcmin

4. FINE GROUND SURFACE


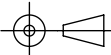
5. POWER, IRREGULARITY, AND SURFACE QUALITY  
SPECIFICATIONS APPLY ACROSS CLEAR APERTURE

6. RoHS COMPLIANT



**FOR INFORMATION ONLY:  
DO NOT MANUFACTURE  
PARTS TO THIS DRAWING**

SPECIFICATIONS SUBJECT TO CHANGE WITHOUT NOTICE  
DIMENSIONS ARE FOR REFERENCE ONLY

REV. A	S1	S2	 Edmund Optics®						
SHAPE	CONVEX	PLANO						EFL	50
RADIUS	22.93	∞						BFL	46.58
SURFACE QUALITY	40-20	40-20			TITLE	25mm DIAMETER X 50mm FL UV-VIS COATED, UV PCX CYLINDER LENS			
CLEAR APERTURE	Ø24.00	Ø24.00							
COATING APERTURE	Ø24.00	Ø24.00							
BEVEL	PROTECTED AS NEEDED	PROTECTED AS NEEDED	ALL DIMS IN	mm	DWG NO	86046	SHEET 1 OF 1		